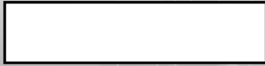


Part number:



HYDROMA

HYDRAULICKÉ SYSTÉMY

**HIDROMA
SISTEMS**

UKŁADY HYDRAULICZNE

HYDROMA

ГИДРАВЛИЧЕСКИЕ СИСТЕМЫ

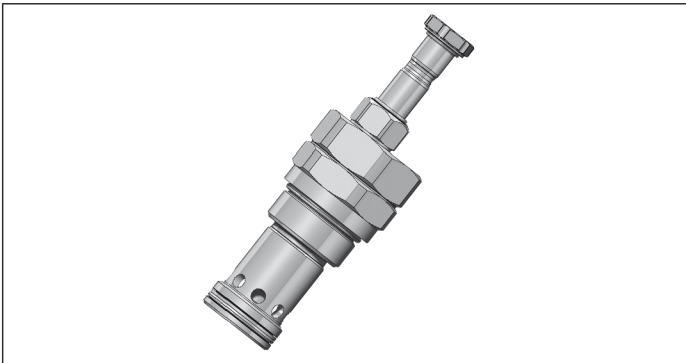
Solenoid operated valves pilot operated poppet type
2-way normally closed
Special cavity, 004

RE 18323-30

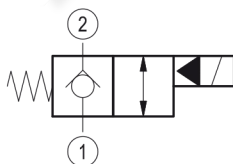
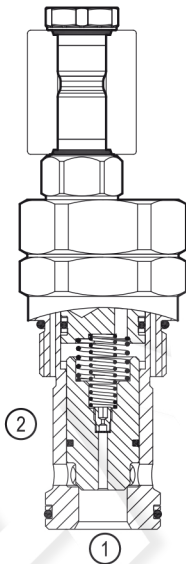
Edition: 03.2017

VEI-16-NC_004

OD.15.03.04 - Y - Z



PATENT PENDING



Technical data

New VEI-16 family incorporates a new solenoid concept providing excellent performance and enables cartridges to work in severe environment. Cartridges also incorporates advanced design of hydraulic parts providing excellent hydraulic performance.

Technical data

General		
Weight		1.13 kg (2.5 lbs)
Installation orientation		Optional
Ambient temperature range		-30 to 90 °C (-22 to 194 °F)
Hydraulic		
Max. operating pressure		350 bar (5000 psi)
Max. proof pressure		420 bar (6000 psi)
Rated flow		260 l/min (69 gpm)
Fatigue cycle life		1 million cycles at 350 bar
Max. internal leakage		20 drops/min.
Fluid temperature range		-20 to 80 °C (-4 to 176 °F)
Fluids: Mineral-based or synthetics with lubricating properties at viscosities of 20 to 380 mm ² /s (cSt)		
Installation torque		110 - 130 Nm (81 - 96 ft-lbs)
Recommended degree of fluid contamination		Nominal value max. 25 μm (NAS 8) ISO 4406 19/17/14
Special cavity		004 see 18325-75
Lines bodies and standard assemblies		Please refer to section "Hydraulic integrated circuit" or consult factory
Seal kit	code	RG0004020520100
	material no.	R930001696
Seal kit coil	code	RG01Z00100000100
	material no.	R930058940
Other technical data		See data sheet 18350-50
Electrical		
Type of voltage		DC voltage
Coil type		D36 see 18325-90
Supply voltage		See data sheet 18325-90
Voltage tolerance against ambient temperature		See characteristic curve
Power consumption		20 W
Duty cycle coil		See characteristic curves %
Type of protection		See data sheet 18325-90
Note: Coils must be ordered separately		

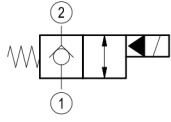
Ordering code

OD.15	03	04	Y	Z	0000	*
--------------	-----------	-----------	----------	----------	-------------	----------

Solenoid operated valves
pilot operated poppet type
2-way normally closed

Series O/A to L
unchanged performances and dimensions

monodirectional type



03

0 = With buna seal
V = With Viton seal

A = Standard
D = Knob style manual override

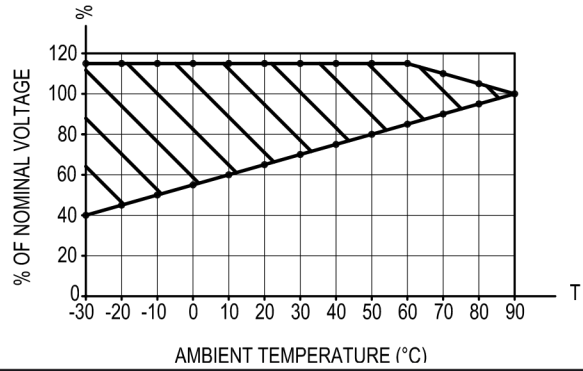
Special cavity: 004

Type	Material number
OD150304A000000	R930064807
OD150304D000000	R930064862

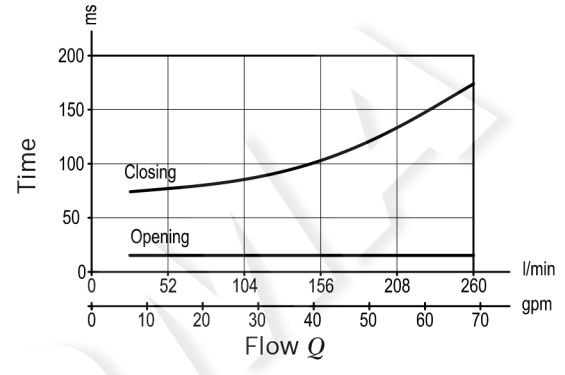
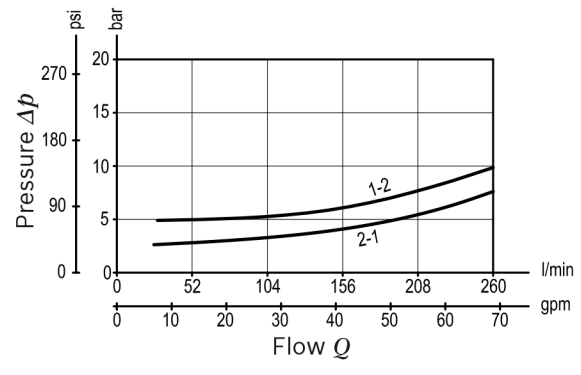
Type	Material number

Characteristic curves

All Versions - Admissible supply voltage Vs. Ambient temperature at 100% duty cycle



Version 03



Dimensions

Solenoid operated valves, poppet 2-way normally closed

