

MZD

DIRECT OPERATED THREE-WAY PRESSURE REDUCING VALVE

SERIES 50
62 200/197 ED

MODULAR VERSION

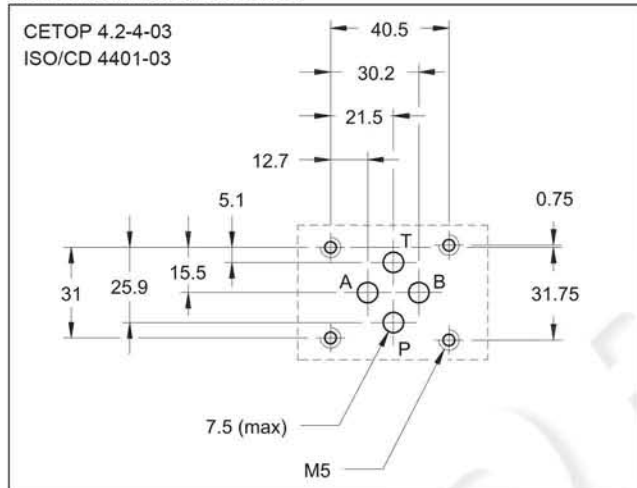
CETOP 03

p max **350 bar**

Q max (see performance ratings table)



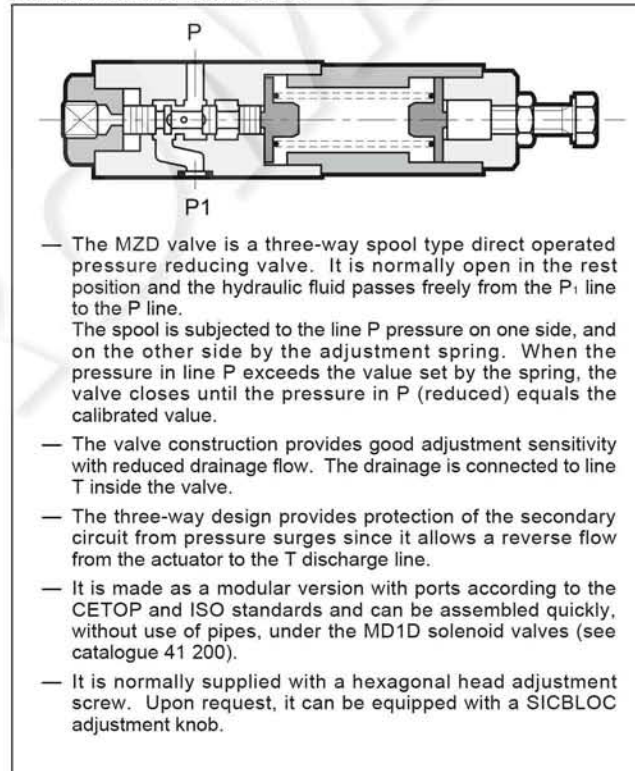
MOUNTING INTERFACE



CONFIGURATIONS (see Hydraulic symbols table)

- MZD*: pressure reduction on line P, drainage connected with line T.
- MZD*/A: pressure reduction on line A toward the actuator and maximum pressure in line B, drainage connected with line T.
- MZD*/B: pressure reduction on line B toward the actuator and maximum pressure in line A, drainage connected with line T.

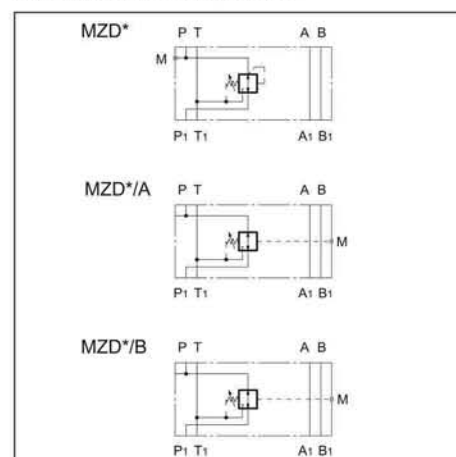
OPERATING PRINCIPLE



PERFORMANCE RATINGS (measured with mineral oil of viscosity 36cSt at 50°C)

Maximum operating pressure	bar	350
Maximum pressure on port T	bar	10
Maximum flow rate in the controlled lines	l/min	50
Maximum flow rate in the free lines	l/min	75
Drainage flow rate	l/min	≤ 0,08
Ambient temperature range	°C	-20 ÷ +50
Fluid temperature range	°C	-20 ÷ +70
Fluid viscosity range	cSt	2,8 ÷ 380
Recommended filtration	µm absolute	≤ 25
Recommended viscosity	cSt	25
Mass	kg	1,4

HYDRAULIC SYMBOLS



1 - IDENTIFICATION CODE

	M	Z	D	/	/	/	50	/	
--	----------	----------	----------	---	---	---	-----------	---	--

CETOP 03 size
Modular version

Direct operated pressure reducing valve

Pressure adjustment range:
 2 = 3 ÷ 35 bar 4 = 30 ÷ 140 bar
 3 = 10 ÷ 70 bar 5 = 50 ÷ 280 bar

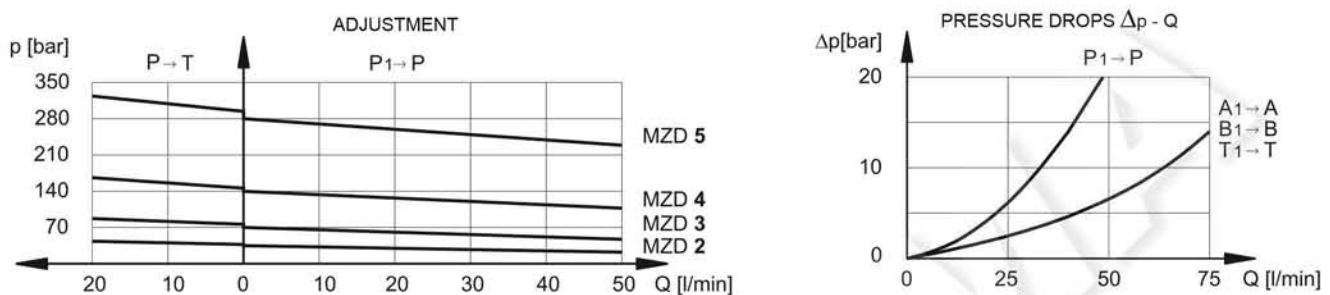
Configurations
 (omit for MZD with control on P)
A: pressure reduction on line A and full pressure on line B
B: pressure reduction on line B and full pressure on line A

Seals:
 omit for mineral oils
V = viton for special fluids

Series No. (the overall and mounting dimensions remain unchanged from 50 to 59)

M = Adjustment with SICBLOC knob
 (omit for adjustment with hexagonal head screw)

2 - CHARACTERISTIC CURVES (values obtained with viscosity of 36 cSt at 50°C)



3 - HYDRAULIC FLUIDS

Use mineral oil-based hydraulic fluids, with the addition of suitable anti-frothing and anti-oxidizing agents.
 For the use of other types (water glycol, phosphate esters and others), please consult our technical department.

4 - OVERALL AND MOUNTING DIMENSIONS

1	Mounting surface with sealing rings: 4 OR type 2037
2	Pressure gauge port 1/4" BSP
3	Hexagonal head adjustment screw. Spanner 17. Rotate clockwise to increase pressure
4	SICBLOC knob. To operate, push and rotate at the same time.

dimensions in mm