

Part number:

HYDROMA

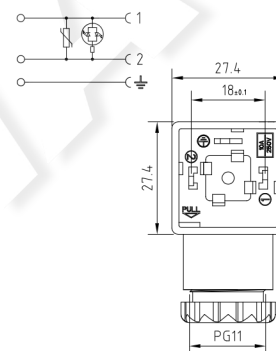
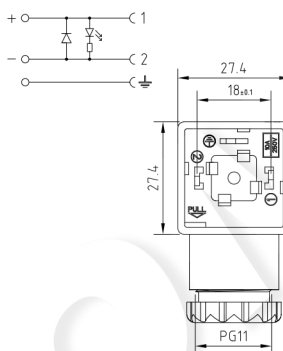
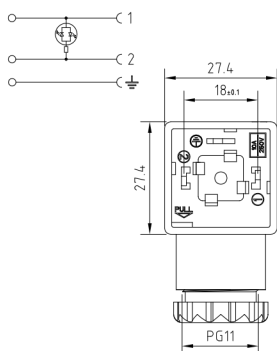
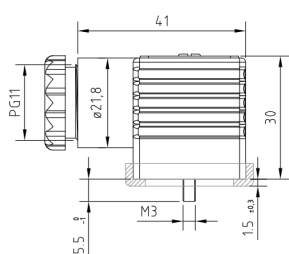
HYDRAULICKÉ SYSTÉMY

**HIDROMA
SISTEMS**

UKŁADY HYDRAULICZNE

HYDROMA

ГИДРАВЛИЧЕСКИЕ СИСТЕМЫ

VALVE CONNECTORS**Technical drawing****Product description**

| | | | | | | | | | |
|--------------------|--|-----------------|-----------------|--|-----------------|-----------------|--|-----------------|-----------------|
| Connector type | DIN valve connectors | | | DIN valve connectors | | | DIN valve connectors | | |
| Conforms to | EN175301-803 | | | EN175301-803 | | | EN175301-803 | | |
| Construction type | A | | | A | | | A | | |
| Part number | G1TU2L01 | G1TU2L02 | G1TU2L03 | G1TU2DL1 | G1TU2DL2 | G1TU2DL3 | G1TU2VL1 | G1TU2VL2 | G1TU2VL3 |
| Description | Square connector G1 series complete with gasket and fixing screw. Connector with electronic. | | | Square connector G1 series complete with gasket and fixing screw. Connector with electronic. | | | Square connector G1 series complete with gasket and fixing screw. Connector with electronic. | | |
| Contacts spacing | 18mm | | | 18mm | | | 18mm | | |
| Number of contacts | 2poles + P.E. | | | 2poles + P.E. | | | 2poles + P.E. | | |
| Earth positioning | H.12 (turnable) | | | H.12 (turnable) | | | H.12 (turnable) | | |
| Housing colour | Transparent | | | Transparent | | | Transparent | | |
| Housing height | 30mm | | | 30mm | | | 30mm | | |
| Cable gland | PG9/PG11 unified | | | PG9/PG11 unified | | | PG9/PG11 unified | | |
| Gasket type | Profiled NBR gasket | | | Profiled NBR gasket | | | Profiled NBR gasket | | |

Technical data

| | | | | | | | | | |
|-------------------------------|------------------------------------|------------|------------|------------------------------------|---------|---------|------------------------------------|------------|------------|
| Type of termination | Screw contacts | | | Screw contacts | | | Screw contacts | | |
| Contact screw torque | 0.5 N*m | | | 0.5 N*m | | | 0.5 N*m | | |
| Rated voltage | 24V AC/DC | 115V AC/DC | 230V AC/DC | 24V DC | 115V DC | 230V DC | 24V AC/DC | 115V AC/DC | 230V AC/DC |
| Circuit type | Bipolar Led | | | Led + Diode(1A) | | | Bipolar Led + Varistor | | |
| Led colour | Red | | | Red | | | Red | | |
| Suitable cable | ø cable 4-8mm or ø cable 6.5-9.5mm | | | ø cable 4-8mm or ø cable 6.5-9.5mm | | | ø cable 4-8mm or ø cable 6.5-9.5mm | | |
| Central fixing screw | M3 L=32.5mm | | | M3 L=32.5mm | | | M3 L=32.5mm | | |
| Central fixing screw material | Iron+Zinc plated | | | Iron+Zinc plated | | | Iron+Zinc plated | | |
| Central screw torque | 0.5 N*m | | | 0.5 N*m | | | 0.5 N*m | | |

Packaging

| | | | | | | | | | |
|---------|-------------|--|--|-------------|--|--|-------------|--|--|
| Qty/Box | 50pcs / box | | | 50pcs / box | | | 50pcs / box | | |
|---------|-------------|--|--|-------------|--|--|-------------|--|--|

Other accessories options

See accessories section

Notes:

Connector available with different led colour