

Part number:

Sequence, pilot operated spool type, compensated

VSQP-CC-150

05.24.06 - X - Y - Z

RE 18309-88

Edition: 03.2016

Replaces: 04.2010



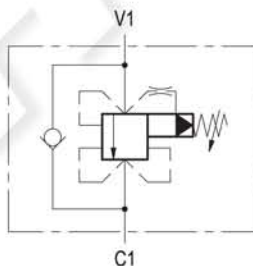
Technical data

| | |
|--|---|
| Operating pressure | up to 210 bar (3000 psi) |
| Max. flow | 150 l/min. (40 gpm) |
| Leakage: 100 cc/min. (6 in ³ /min.) at max. relief setting | |
| For a good performance, the pressure in the secondary circuit should not drop below 20 bar (290 psi). | |
| Weight | 1.1 kg (2.4 lbs) |
| Manifold material | Aluminium |
| Note: aluminium bodies are often strong enough for operating pressures exceeding 210 bar (3000 psi), depending from the fatigue life expected in the specific application. If in doubt, consult our Service Network. | |
| Fluid | Mineral oil (HL, HLP) according DIN 51524 |
| Fluid temperature range | -30 °C to 100 (-22 to 212 °F) |
| Viscosity range | 10 to 500 mm ² /s (cSt) |
| Recommended degree of fluid contamination | Class 19/17/14 according to ISO 4406 |
| Other technical data | see data sheet 18350-50 |

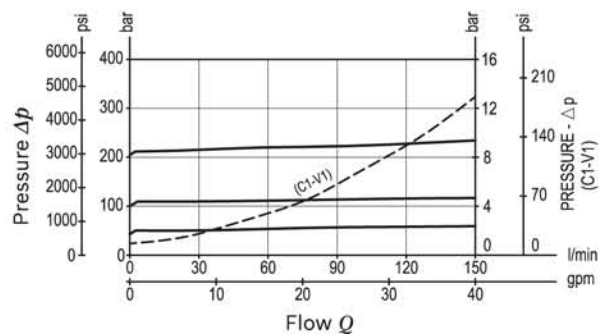
Note: for applications outside these parameters, please consult us.

Description

Initially, the flow goes to a side line connected to V1, not shown here, and energizes a first actuator until pressure increases to meet the selected valve setting; then flow opens the relief cartridge and passes from V1 to C1 energizing the second actuator connected to C1. The valve applies a balanced relief piston allowing relief operation at the valve setting independent of back-pressure at C1. With line pressure equal or higher than setting, after valve opening, the full pressure is transferred from V1 to C1 and to the second actuator. The check valve allows reverse flow, from C1 to V1.



Characteristic curve



Ordering code

| | | | |
|-----------------|----------|----------|----------|
| 05.24.06 | X | Y | Z |
|-----------------|----------|----------|----------|

Sequence
pilot operated spool type, compensated

Adjustments

03 Leakproof hex. socket screw



| | SPRINGS | | |
|-----------|-------------------------------|------------------------------------|------------------------------------|
| | Adj. pressure range bar (psi) | Pres. increase bar/turn (psi/turn) | Std. setting Q=5 (l/min) bar (psi) |
| 20 | 10-210 (145-3000) | 35 (508) | 200 (2900) |

Tamper resistant cap
ordering code 03.05.01.004
Mat. no. R930023246



| Port sizes | V1 | C1 | |
|------------|-------|-------|--|
| 03 | G 1/2 | G 1/2 | |
| 04 | G 3/4 | G 3/4 | |

Preferred types

| Type | Material number |
|-----------------|-----------------|
| 052406030320000 | R930001501 |
| 052406030420000 | R930001503 |

| Type | Material number |
|------|-----------------|
| | |
| | |
| | |

Dimensions

