

Part number:

HYDROMA

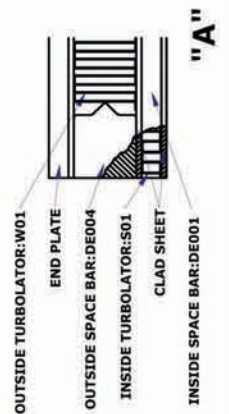
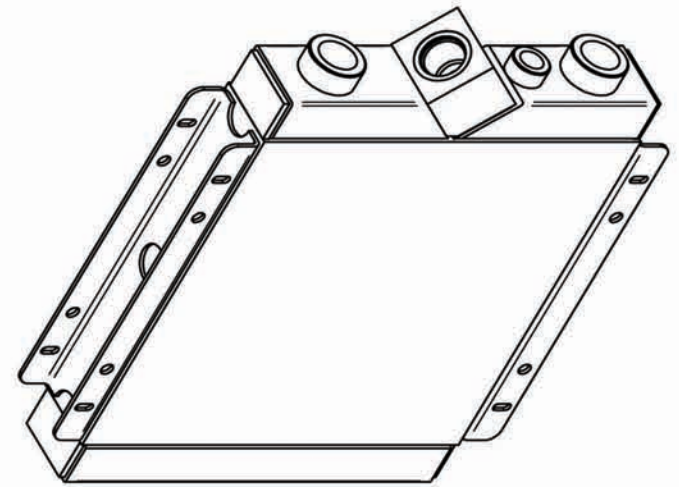
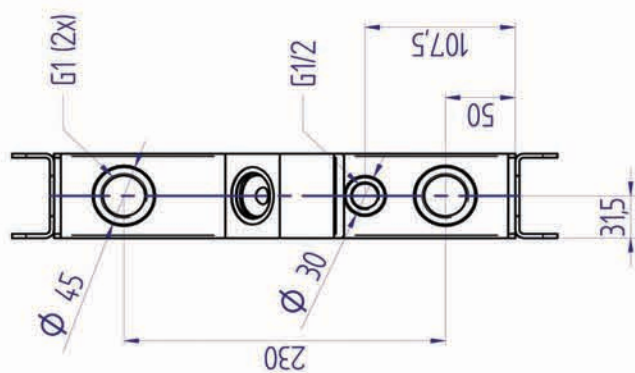
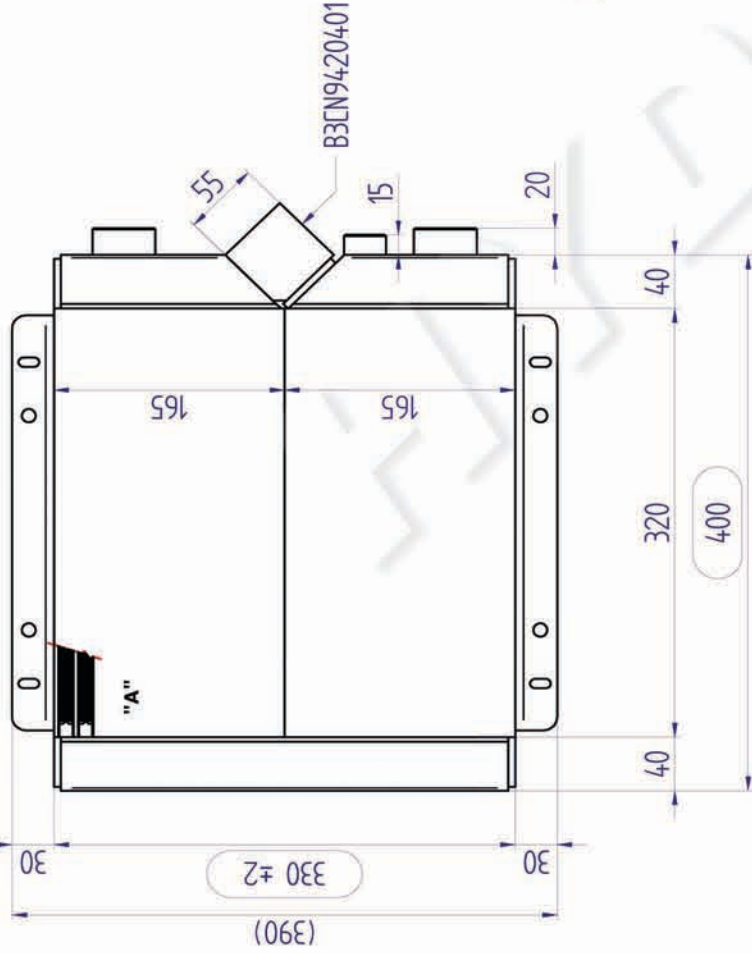
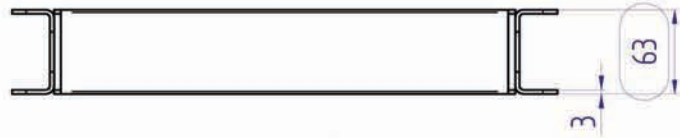
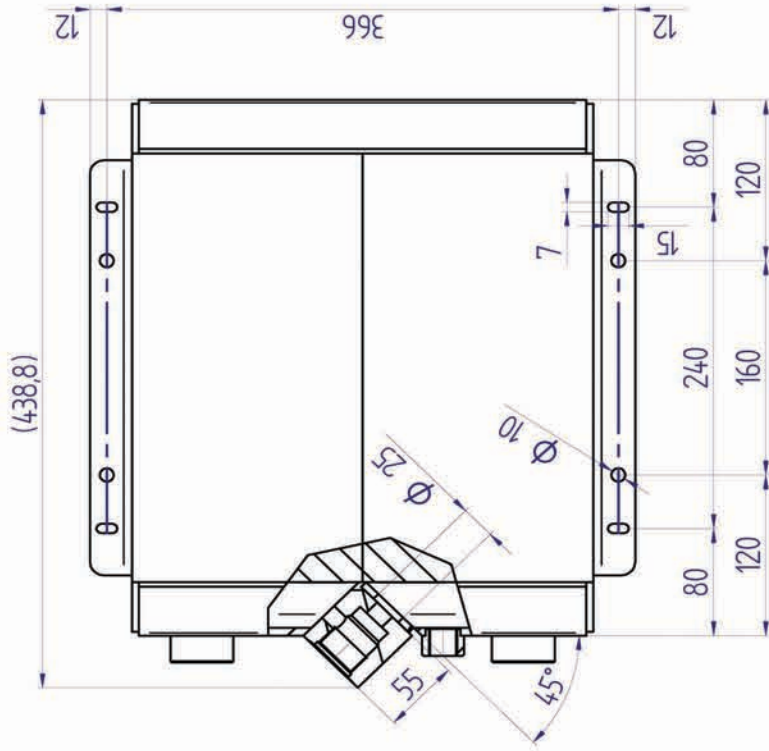
HYDRAULICKÉ SYSTÉMY

HIDROMA
SYSTEMS

UKŁADY HYDRAULICZNE

HYDROMA

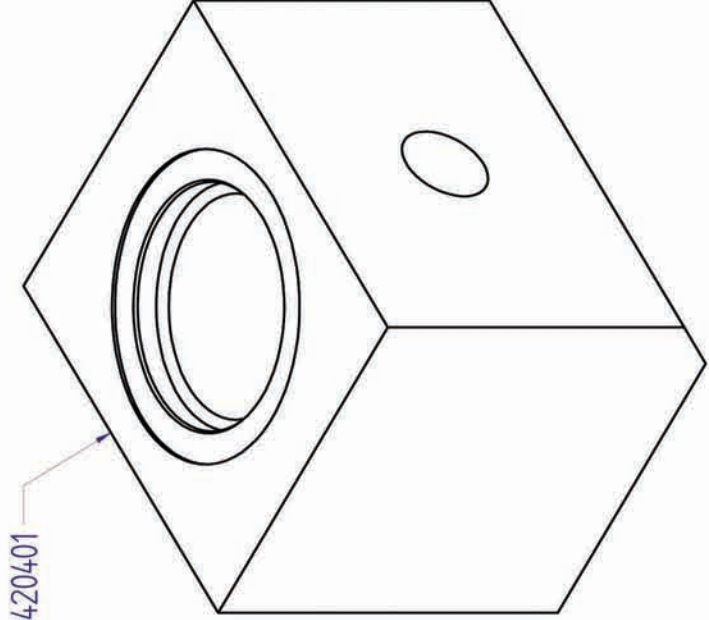
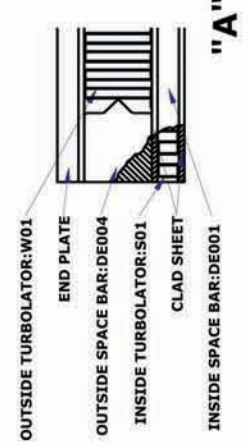
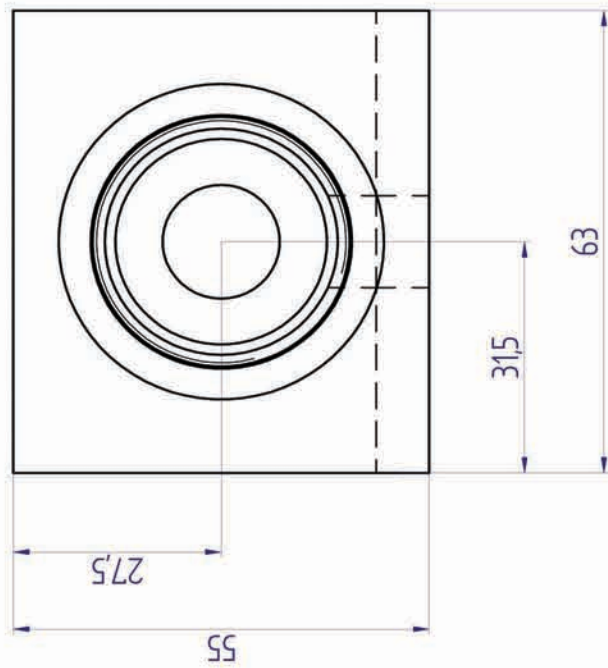
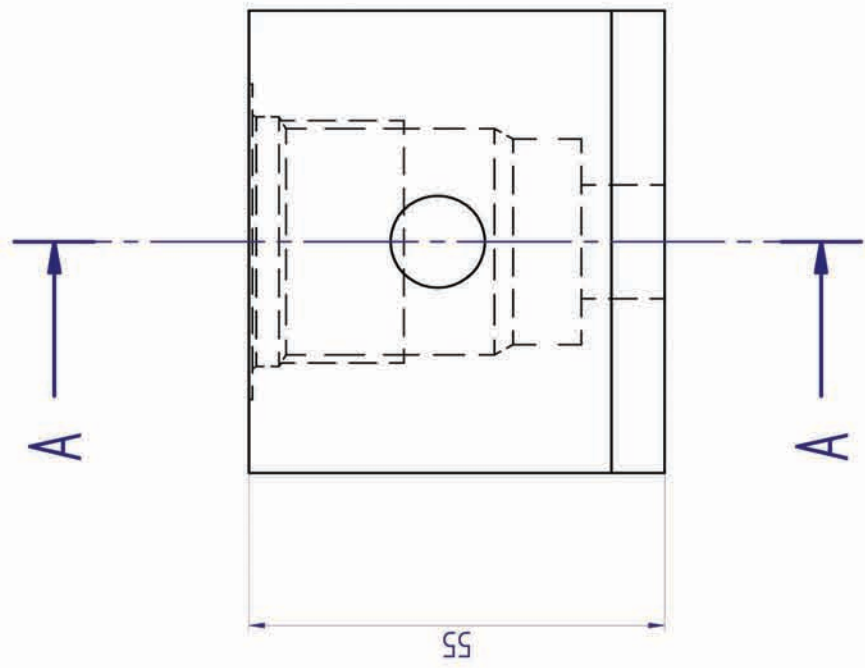
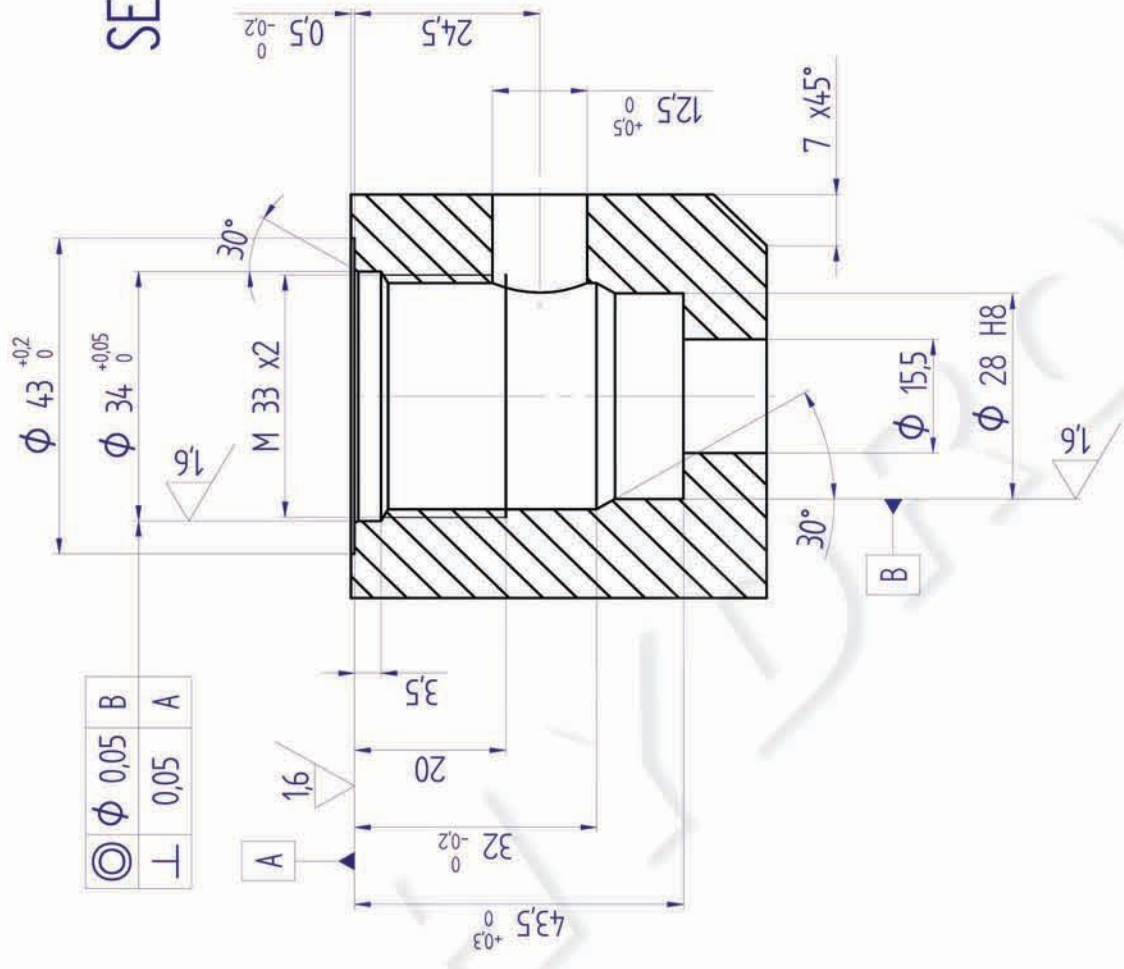
ГИДРАВЛИЧЕСКИЕ СИСТЕМЫ



REV.	DESCRIPTION	DRW.	n° Project	DATE
-	-	-	-	-
-	-	-	-	-
-	-	-	-	-

The welding meet the requirements set forth in standard EN ISO 10042 - Quality Level C unless stated otherwise											
CODE	DESCRIPTION	General Tolerances	0.5-3	>3-6	>6-30	>30-120	>120-400	>400-1000	>1000-2000	>2000-4000	
SE94204.00	PAINTED: NERO, RAL 9005	ISO 2768-v	-	±0.5	±1	±1.5	±2.5	±4	±6	±8	
SG94204.00	NO PAINTED	Material	Desse specifications:SP095								
Fluid	OIL	Painting:	Desse specifications:SP092								
Design Pressure	16 bar	Designer 3D	Designer 2D		App/Ver		Scale		15		
Test Pressure	24 bar	First Issue Date	20/09/2017		Last Issue Date		26/10/2017		Project N°		
Volume	2,1 l	Designer 3D	Designer 2D		App/Ver		Scale		15		
Design Temperature	Min -20° Max 120°	Description	HE 0400x063x0330 - W01-S01								
Derived From Code:		Customer code:		Code		942-04.00		Page		1 / 2	

SECTION A-A



REV.	DESCRIPTION	DRW.	n° Project	DATE
-	-	-	-	-
-	-	-	-	-
-	-	-	-	-

The welding meet the requirements set forth in standard EN ISO 10042 - Quality Level C unless stated otherwise									
CODE	DESCRIPTION	0.5-3	>3-6	>6-30	>30-120	>120-400	>400-1000	>1000-2000	>2000-4000
SC94204.00	PAINTED: NERO RAL 9005	0.5-3	>3-6	>6-30	>30-120	>120-400	>400-1000	>1000-2000	>2000-4000
SE94204.00	NO PAINTED	-	±0.5	±1	±1.5	±2.5	±4	±6	±8

Material	SP095
Painting:	SP092
Designer 3D	Designer 2D
App/Ver	Scale
First Issue Date	26/10/2017
Last Issue Date	26/10/2017
Project N°	PR17/279
Description	HE 0400x063x0330 - W01-S01
Derived From Code:	Customer code:
Code	942-04.00
Page	2 / 2