

Part number:

HYDROMA

HYDRAULICKÉ SYSTÉMY

**HIDROMA
SYSTEMS**

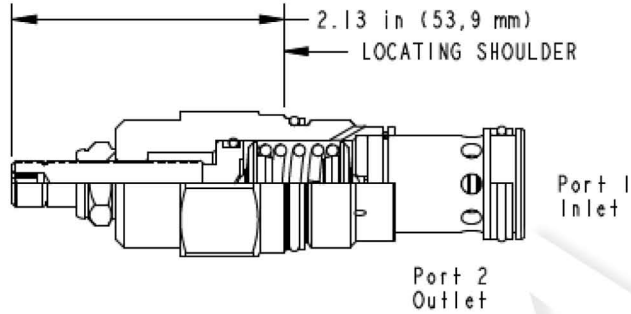
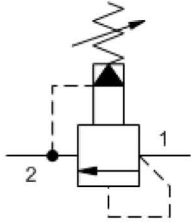
UKŁADY HYDRAULICZNE

HYDROMA

ГИДРАВЛИЧЕСКИЕ СИСТЕМЫ

MODEL
RPGC

Pilot-operated, balanced piston relief valve
SERIES 2 / CAPACITY: 200 L/min. / CAVITY: T-3A



CONFIGURATION

L	Control	Standard Screw Adjustment
W	Adjustment Range	150 - 4500 psi (10,5 - 315 bar), 1000 psi (70 bar) Standard Setting
N	Seal Material	Buna-N
(none) Material/Coating		

Pilot-operated, balanced-piston relief cartridges are normally closed pressure regulating valves. When the pressure at the inlet (port 1) reaches the valve setting, the valve starts to open to tank (port 2), throttling flow to regulate the pressure. These valves are accurate, have low pressure rise vs. flow, they are smooth and quiet, and are moderately fast.

TECHNICAL DATA

NOTE: DATA MAY VARY BY CONFIGURATION. SEE CONFIGURATION SECTION.

Maximum Operating Pressure	350 bar
Factory Pressure Settings Established at	15 L/min.
Maximum Valve Leakage at 110 SUS (24 cSt)	50 cc/min. @70 bar
Response Time - Typical	10 ms
Adjustment - No. of CW Turns from Min. to Max. setting	5
Locknut Hex Size	15 mm
Locknut Torque	9 - 10 Nm
Seal kit - Cartridge	Buna: 990203007
Seal kit - Cartridge	EPDM: 990203014
Seal kit - Cartridge	Polyurethane: 990003002
Seal kit - Cartridge	Viton: 990203006

NOTES

For Series 1 cartridges configured with an O control (panel mount handknob), a .75 in. (19 mm) diameter hole is required in the panel.

CONFIGURATION OPTIONS

Model Code Example: **RPGCLWN**

CONTROL	(L) ADJUSTMENT RANGE	(W) SEAL MATERIAL	(N) MATERIAL/COATING
L Standard Screw Adjustment	W 150 - 4500 psi (10,5 - 315 bar), 1000 psi (70 bar) Standard Setting	N Buna-N	Standard Material/Coating
C Tamper Resistant - Factory Set	A 100 - 3000 psi (7 - 210 bar), 1000 psi (70 bar) Standard Setting	E EPDM	/AP Stainless Steel, Passivated
J Capped Screw Adjustment	B 50 - 1500 psi (3,5 - 105 bar), 1000 psi (70 bar) Standard Setting	V Viton	/LH Mild Steel, Zinc-Nickel
K Handknob	C 150 - 6000 psi (10,5 - 420 bar), 1000 psi (70 bar) Standard Setting		
O Handknob with Panel Mount	D 25 - 800 psi (1,7 - 55 bar), 400 psi (28 bar) Standard Setting		
W Hex Wrench Adjustment	E 25 - 400 psi (1,7 - 28 bar), 200 psi (14 bar) Standard Setting		
Y Tri-Grip Handknob	N 60 - 800 psi (4 - 55 bar), 400 psi (28 bar) Standard Setting		
	Q 60 - 400 psi (4 - 28 bar), 200 psi (14 bar) Standard Setting		