

Part number:

HYDROMA

HYDRAULICKÉ SYSTÉMY

**HIDROMA
SYSTEMS**

UKŁADY HYDRAULICZNE

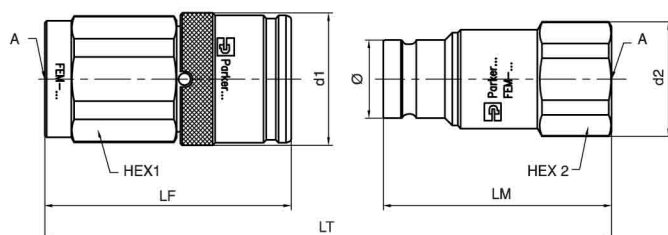
HYDROMA

ГИДРАВЛИЧЕСКИЕ СИСТЕМЫ

Industrial and chemical FEM Series

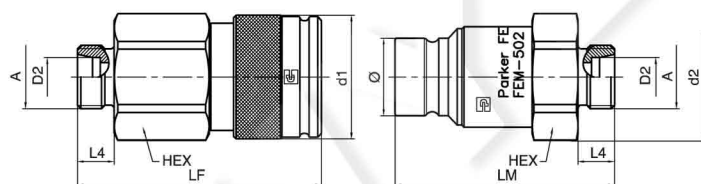
Dimensions and part numbers

Female BSPP thread – DIN 3852



Body size inch	Thread A inch	d1 mm	Hex 1 mm	LF mm	d2 mm	Hex 2 mm	LM mm	LT connected mm	Ø mm	Part number female body	Weight gr./piece	Part number male tip	Weight gr./piece
Female BSPP thread													
1/4"	1/4	29.5	27	53.1	23.8	22	47.9	90.2	16.1	FEM-251-4FB	193	FEM-252-4FB	86
3/8"	3/8	33.5	30	64.8	29.0	27	60.0	108.8	19.7	FEM-371-6FB	286	FEM-372-6FB	146
	1/2	33.5	30	69.8	29.0	27	62.5	116.3	19.7	FEM-371-8FB	286	FEM-372-8FB	146
1/2"	1/2	39.5	36	76.8	35.0	32	68.0	127.6	24.5	FEM-501-8FB	467	FEM-502-8FB	235
	3/4	39.5	36	83.8	40.0	36	70.5	137.1	24.5	FEM-501-12FB	477	FEM-502-12FB	273
5/8"	3/4	43.5	41	84.0	38.5	36	73.0	139.5	27.0	FEM-621-12FB	640	FEM-622-12FB	299
3/4"	1	49.5	46	98.8	49.8	46	83.7	160.7	30.0	FEM-751-16FB	983	FEM-752-16FB	475
1"	1-1/4	56.5	55	105.8	59.8	55	90.0	172.8	36.0	FEM-1001-20FB	1365	FEM-1002-20FB	706

24° cone – DIN 2353



Body size inch	Series	Tube O/D D2	DN mm	Thread A mm	d1 mm	Hex mm	LF mm	d2 mm	LM mm	LT connected mm	L4 mm	Ø mm	Part number female body	Weight gr./piece	Part number male tip	Weight gr./piece
Male metric thread																
3/8"	L*	10	8	M16X1.5	33.5	30	69.6	32	65.5	119.1	11	19.7	FEM-371-16MCL	270	FEM-372-16MCL	155
	L*	12	10	M18X1.5	33.5	30	67.6	32	65.5	117.1	11	19.7	FEM-371-18MCL	262	FEM-372-18MCL	155
	L*	15	12	M22X1.5	33.5	30	68.6	32	66.5	119.1	12	19.7	FEM-371-22MCL	268	FEM-372-22MCL	161
1/2"	L*	12	10	M18X1.5	39.5	36	79.1	40	71.0	132.9	11	24.5	FEM-501-18MCL	433	FEM-502-18MCL	259
	L*	15	12	M22X1.5	39.5	36	80.1	40	72.0	134.9	12	24.5	FEM-501-22MCL	441	FEM-502-22MCL	265

*Light series