

Part number:

HYDROMA

HYDRAULICKÉ SYSTÉMY

**HIDROMA
SYSTEMS**

UKŁADY HYDRAULICZNE

HYDROMA

ГИДРАВЛИЧЕСКИЕ СИСТЕМЫ

In line pressure compensated double-acting flow control valves

FT 270/2

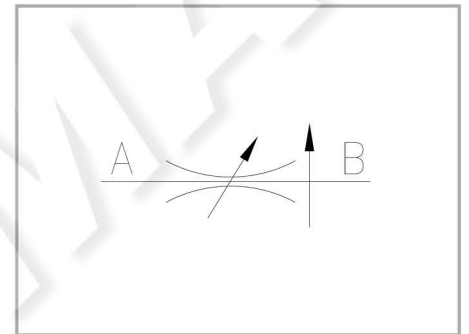
Compensated double-acting flow control valves available from 1/4" to 1" BSPP size, max. working pressure 250 Bar, adjustable oil flow rate from 2 to 140 Lt./min. (depending on the size) - Precision in compensation +/- 5% max

Double-acting control

Pressure compensated In line or panel mounting

Carbon steel

Connections: F - F Female - Female



Technical information

Technical description

The pressure compensated valves FT 270/2 are made up of an adjustable orifice and of a pressure compensator piston. Inside the base they are equipped with wide transversal sections which reduce the pressure drop. The accuracy of the internal components processing ensures a very low hysteresis and a remarkable precision in compensation that for this series is around $\pm 5\%$ of the flow rate. The accurate checks carried out on the products ensure a proper functioning of the valves also in heavy working conditions and an excellent lasting reliability.

Materials

| | |
|---|---|
| CORPO BASE / BASE BODY | Acciaio/Steel 11 S Mn Pb 37-UNI EN 10087 |
| SPILO DI REGOLAZIONE / ADJUSTING NEEDLE | Acciaio legato/Alloy steel |
| CORPO CARTUCCIA / CARTRIDGE BODY | Acciaio/Steel 39 Ni Cr Mo 3-UNI EN 10083 |
| GUARNIZIONI / GASKETS | Di serie NBR - A richiesta FPM/Standard NBR-on demand FPM |
| ANELLI ANTIESTRUSIONE / ANTIEXTRUSION RINGS | PTFE |
| MANOPOLA TIPO MA - RA / KNOB TYPE MA - RA | Alluminio/Aluminum GD AlSi12 - UNI EN AB 46100 |
| MANOPOLA TIPO MP / KNOB TYPE MP | ABS |

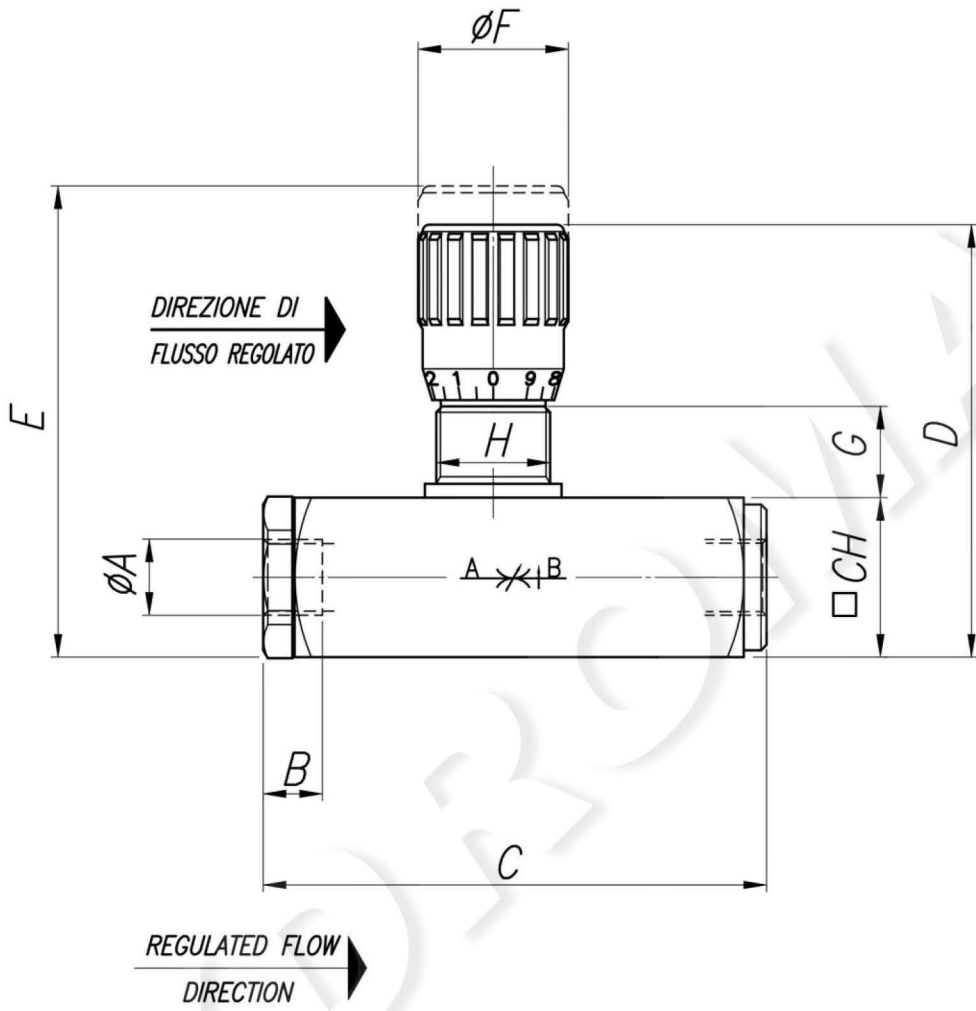
Technical data

| TIPO / TYPE | PRESSIONE ESERCIZIO BAR / WORKING PRESSURE BAR | MIN. ΔP DI FUNZIONAMENTO BAR / MIN. WORKING ΔP BAR | TEMPERATURA ESERCIZIO / WORKING TEMPERATURE | GRADO DI FILTRAZIONE μm / FILTRATION GRADE μm |
|-------------|---|---|--|--|
| 14 | 250 | 5 | -20°C/+70°C | 25 |
| 38 | 250 | 7 | -20°C/+70°C | 25 |
| 12 | 250 | 10 | -20°C/+70°C | 25 |
| 34 | 250 | 10 | -20°C/+70°C | 25 |
| 100 | 250 | 16 | -20°C/+70°C | 25 |

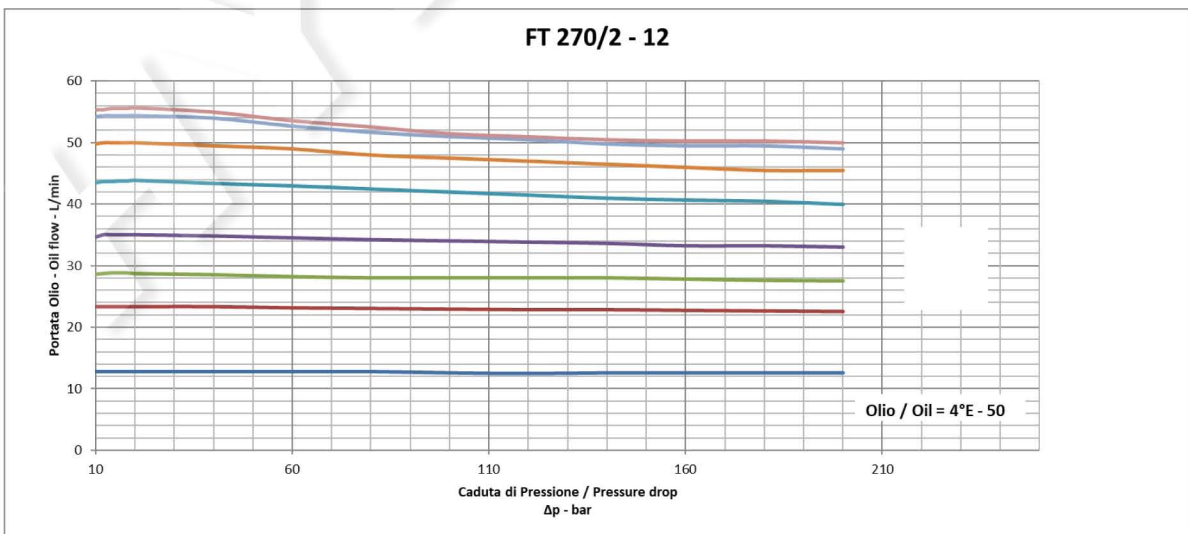
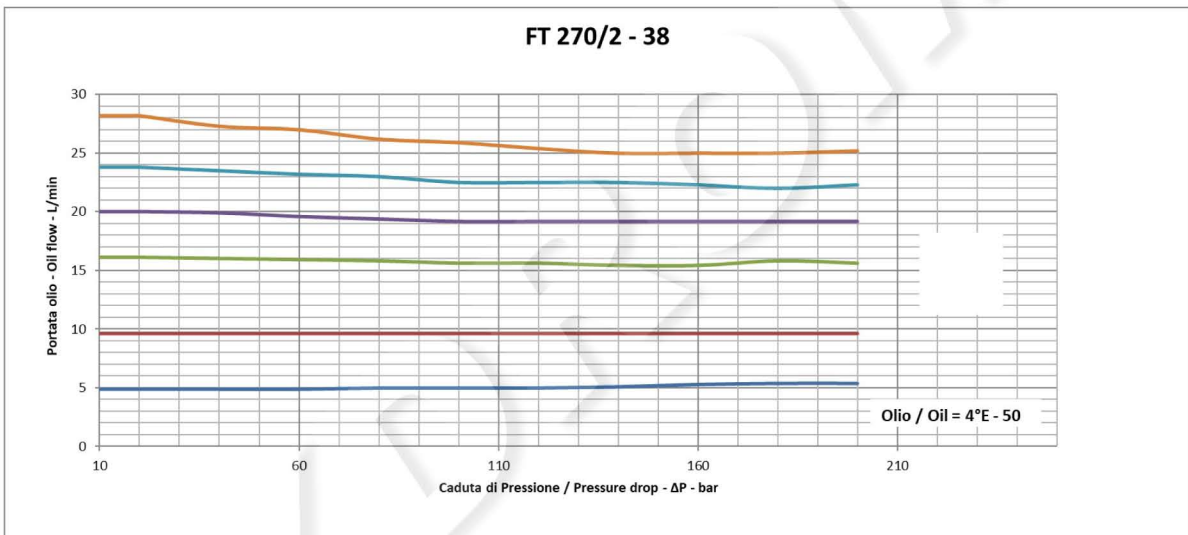
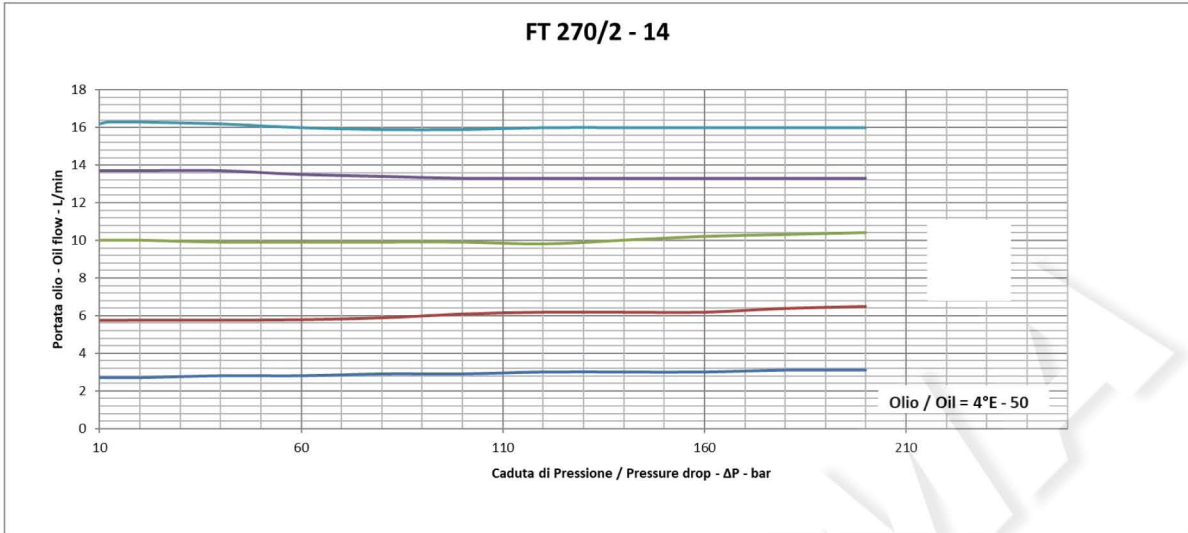
Dimensional tables and drawings

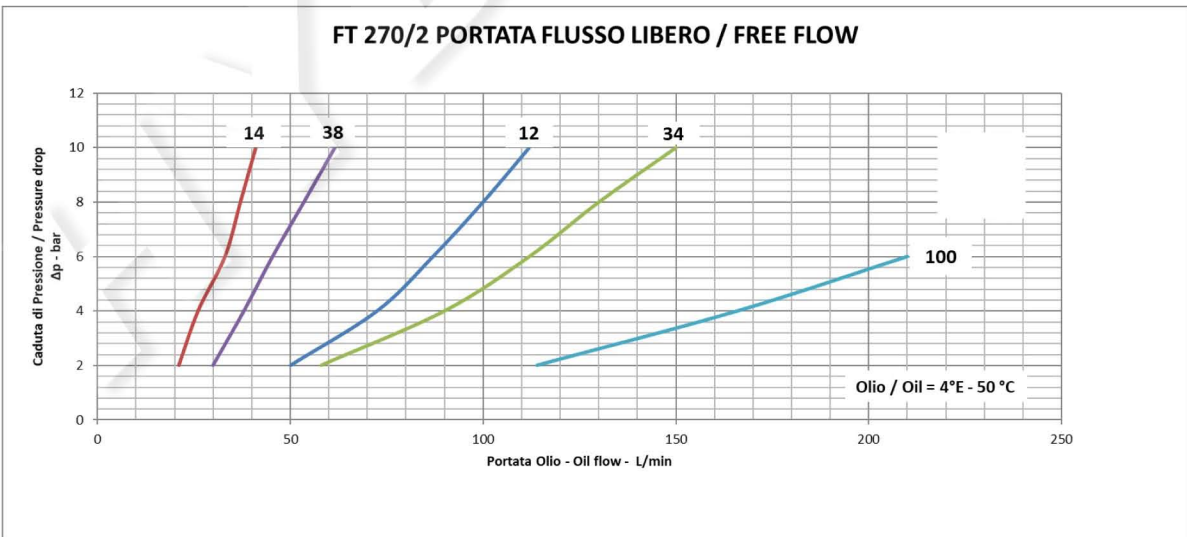
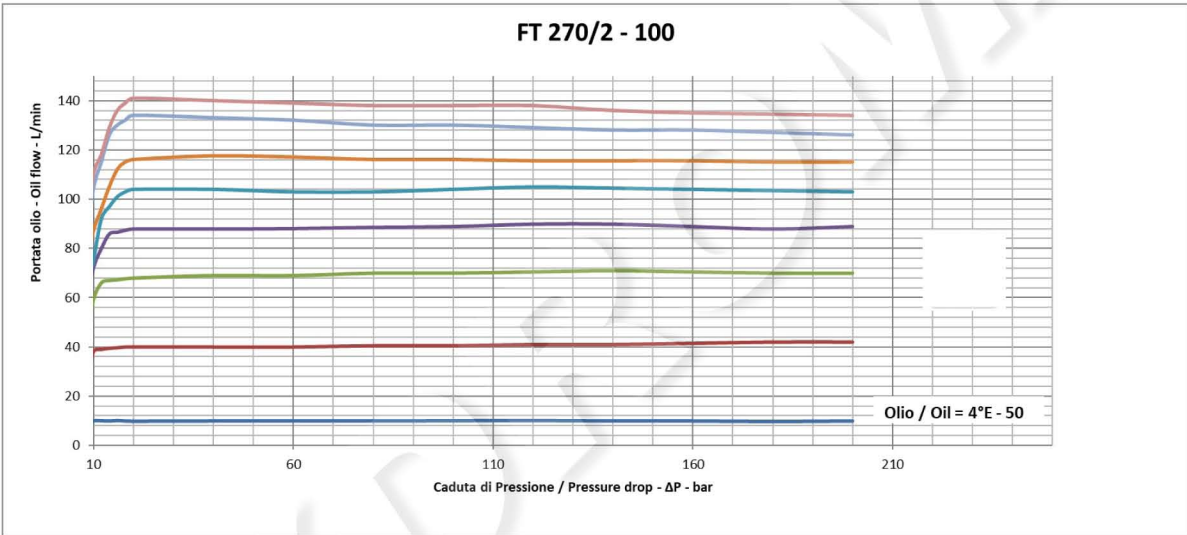
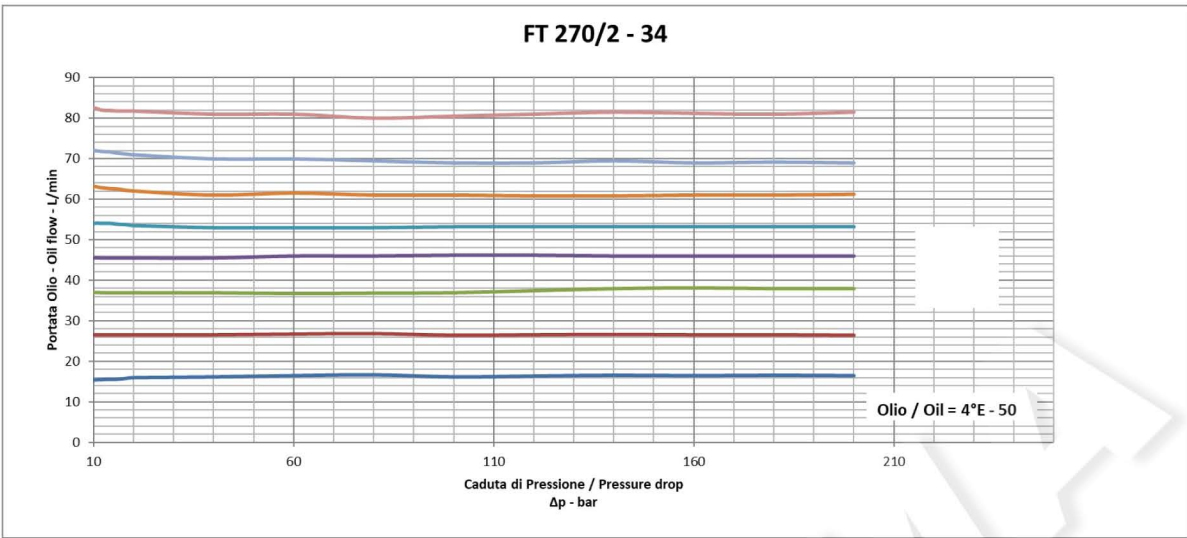
| TIPO / TYPE | A UNI 338 | B | C | D | E |
|-------------|--------------|------|-------|------|------|
| 14 | 1/4" G | 12,5 | 96 | 81,5 | 88,5 |
| 38 | 3/8" G | 13 | 112,5 | 94,5 | 103 |
| 12 | 1/2" G | 15,5 | 141,5 | 112 | 122 |
| 34 | 3/4" G | 17 | 168 | 138 | 150 |
| 100 | 1" G | 21 | 216 | 175 | 192 |

| TIPO / TYPE | ØF | G | H | CH | PESO / WEIGHT KG |
|-------------|----|----|---------|----|---------------------|
| 14 | 27 | 15 | M20x1 | 30 | 0,580 |
| 38 | 33 | 17 | M25x1,5 | 35 | 0,940 |
| 12 | 38 | 18 | M30x1,5 | 45 | 1,830 |
| 34 | 47 | 24 | M40x1,5 | 55 | 3,350 |
| 100 | 58 | 32 | M50x1,5 | 70 | 7,000 |



Flow rate curves





FT 270/2

