

Part number:

**HYDROMA**

HYDRAULICKÉ SYSTÉMY

**HIDROMA  
SYSTEMS**

UKŁADY HYDRAULICZNE

**HYDROMA**

ГИДРАВЛИЧЕСКИЕ СИСТЕМЫ

## In line pressure compensated single-acting flow control valves

### FT 270/5

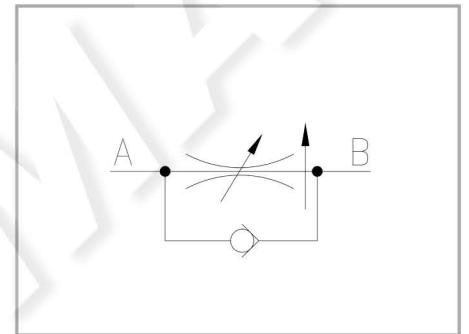
Compensated single-acting flow control valves available from 1/4" to 1" BSPP size, max. working pressure 250 Bar, adjustable oil flow rate from 2 to 140 Lt./min. (depending on the size) - Precision in compensation +/- 5% max

**Single-acting control**

**Pressure compensated In line or panel mounting**

**Carbon steel**

**Connections: F - F Female - Female**



## Technical information

### Technical description

The pressure compensated valves FT 270/5 are essentially composed of an adjustable orifice and of a pressure compensator. The check valves, realized through a shutter, reduce the number of the components in movement. Inside the base there are wide cross-sections which significantly reduce the pressure drop. The accuracy of the machining of the internal components ensures a very low hysteresis and a remarkable precision in compensation that on this series is around  $\pm 4\%$  of the flow rate. The accurate checks carried out on the products ensure a proper functioning of the valves also in heavy working conditions and an excellent lasting reliability.

### Materials

<b>CORPO BASE / BASE BODY</b>	<b>Acciaio/Steel 11 S Mn Pb 37-UNI EN 10087</b>
<b>SPILLO DI REGOLAZIONE / ADJUSTING NEEDLE</b>	<b>Acciaio legato/Alloy steel</b>
<b>CORPO CARTUCCIA / CARTRIDGE BODY</b>	<b>Acciaio/Steel 39 Ni Cr Mo 3-UNI EN 10083</b>
<b>GUARNIZIONI / GASKETS</b>	<b>Di serie NBR - A richiesta FPM/Standard NBR-on demand FPM</b>
<b>ANELLI ANTIESTRUSIONE / ANTIEXTRUSION RINGS</b>	<b>PTFE</b>
<b>MANOPOLA TIPO MA - RA / KNOB TYPE MA - RA</b>	<b>Alluminio/Aluminum GD AlSi12 - UNI EN AB 46100</b>
<b>MANOPOLA TIPO MP / KNOB TYPE MP</b>	<b>ABS</b>

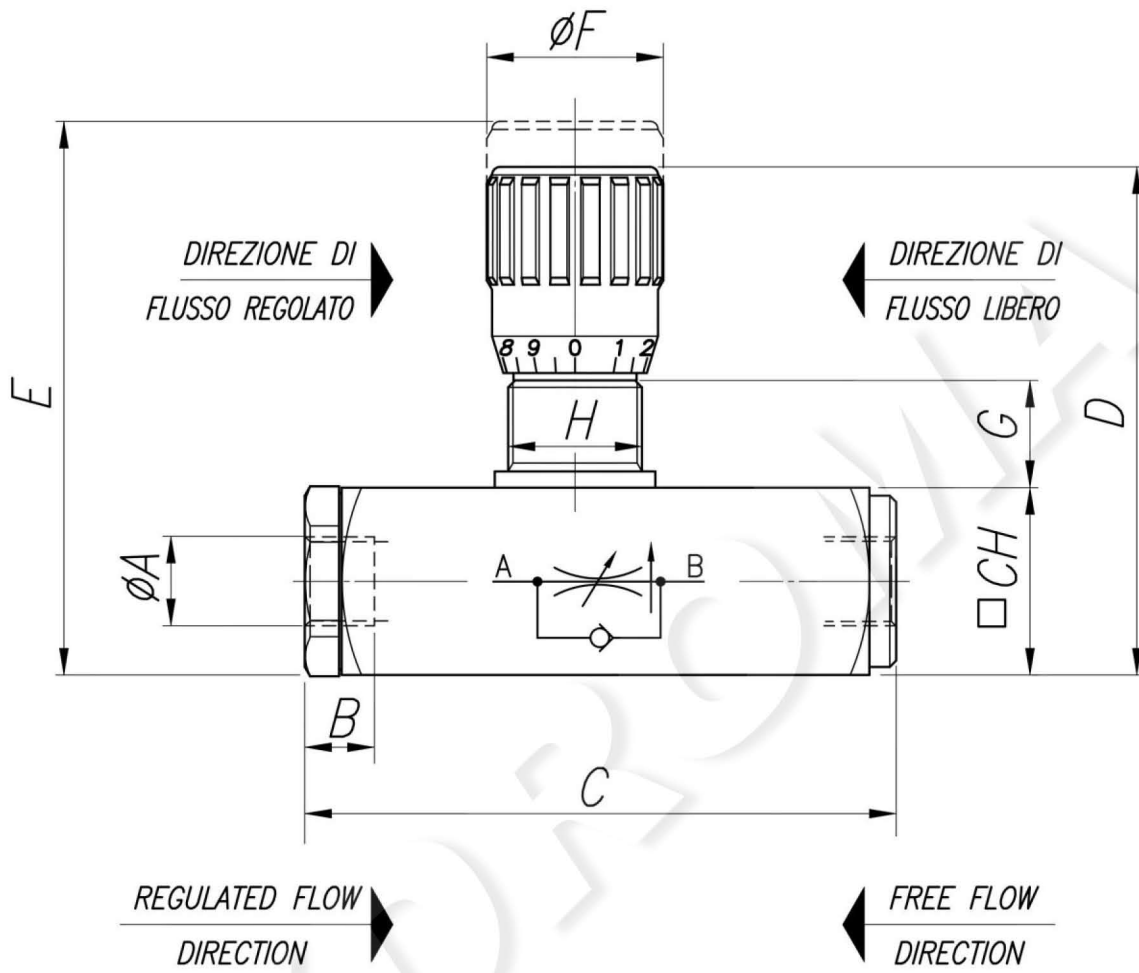
## Technical data

TIPO / TYPE	PRESSIONE ESERCIZIO BAR / WORKING PRESSURE BAR	MIN. ΔP DI FUNZIONAMENTO BAR / MIN. WORKING ΔP BAR	TEMPERATURA ESERCIZIO / WORKING TEMPERATURE	GRADO DI FILTRAZIONE μm / FILTRATION GRADE μm
14	250	5	-20°C/+70°C	25
38	250	7	-20°C/+70°C	25
12	250	10	-20°C/+70°C	25
34	250	10	-20°C/+70°C	25
100	250	16	-20°C/+70°C	25

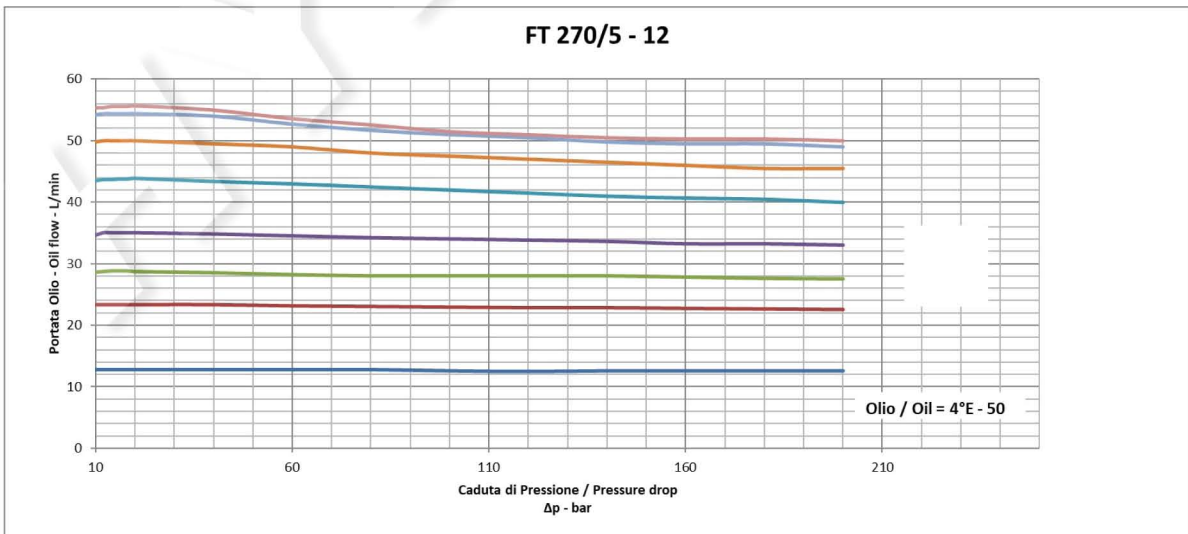
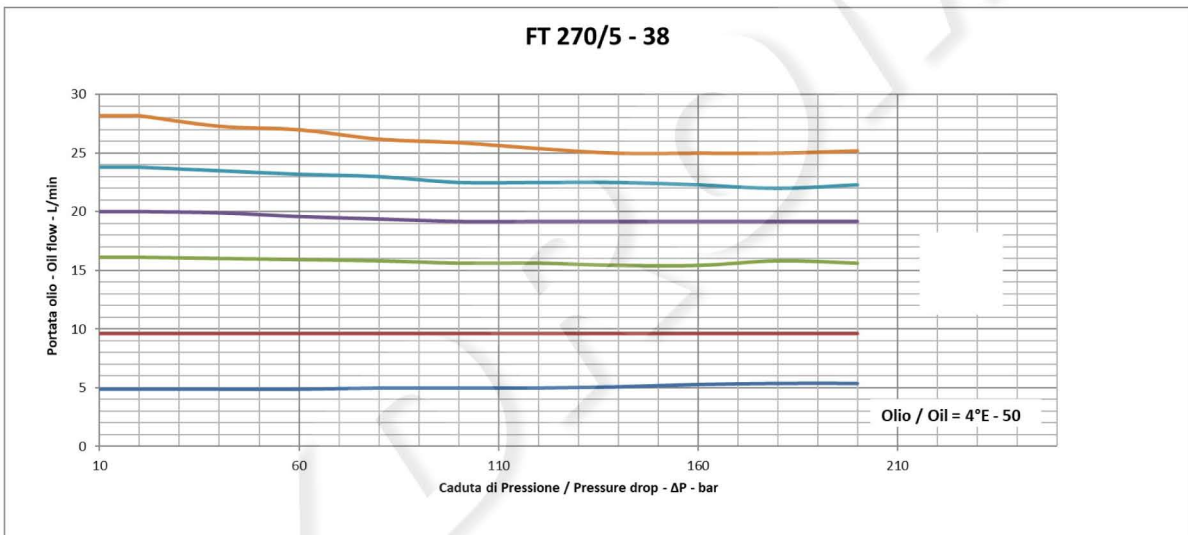
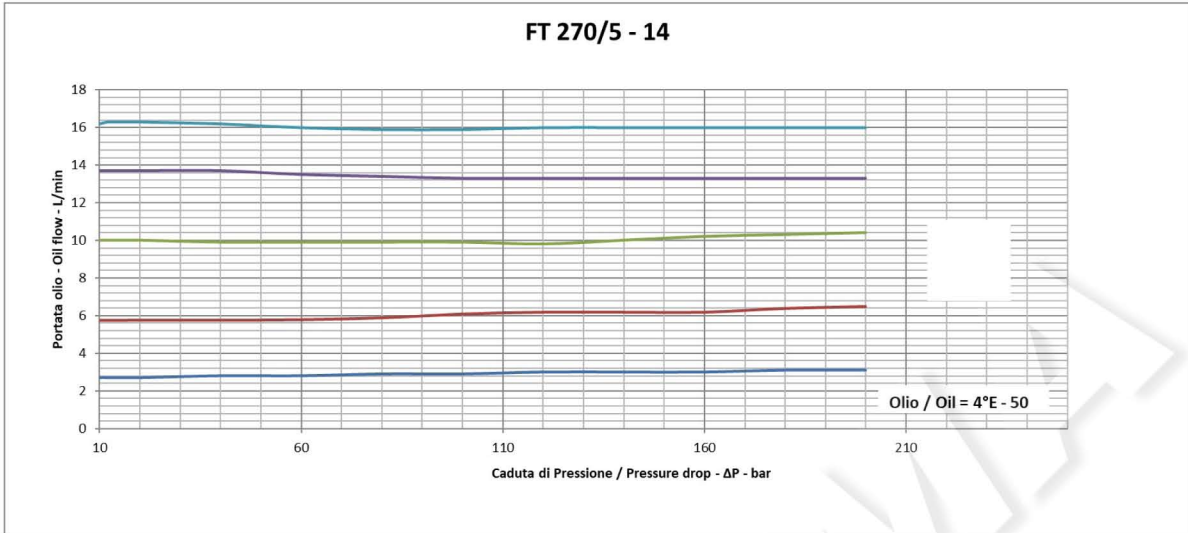
## Dimensional tables and drawings

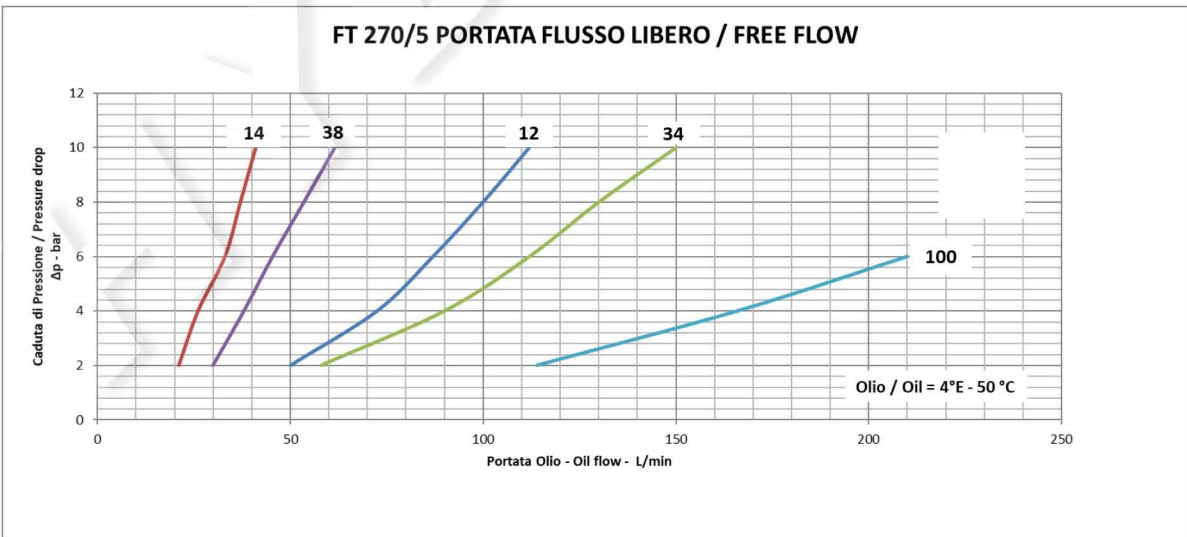
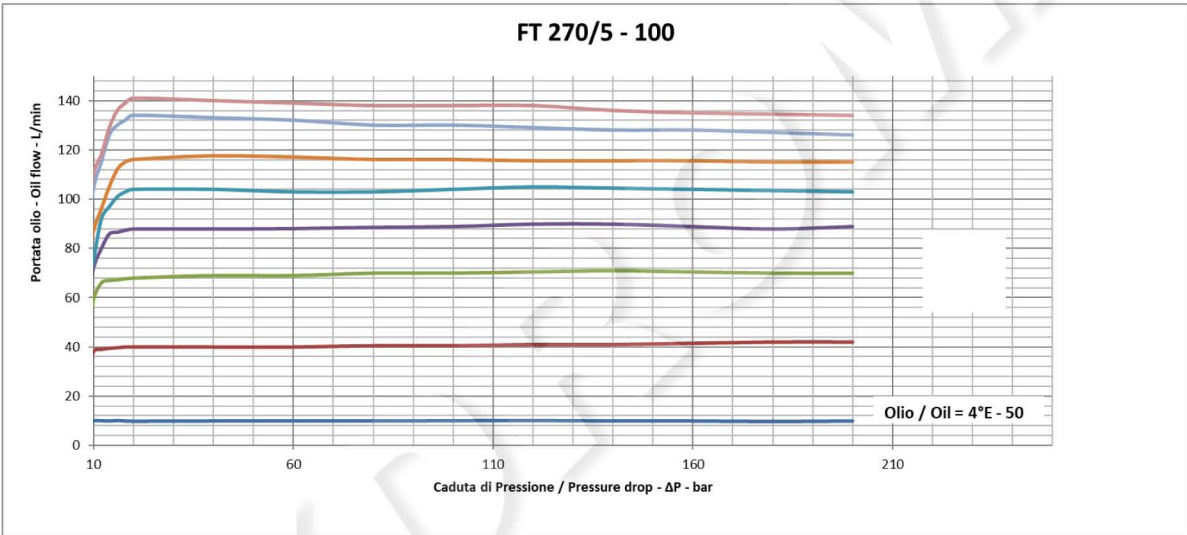
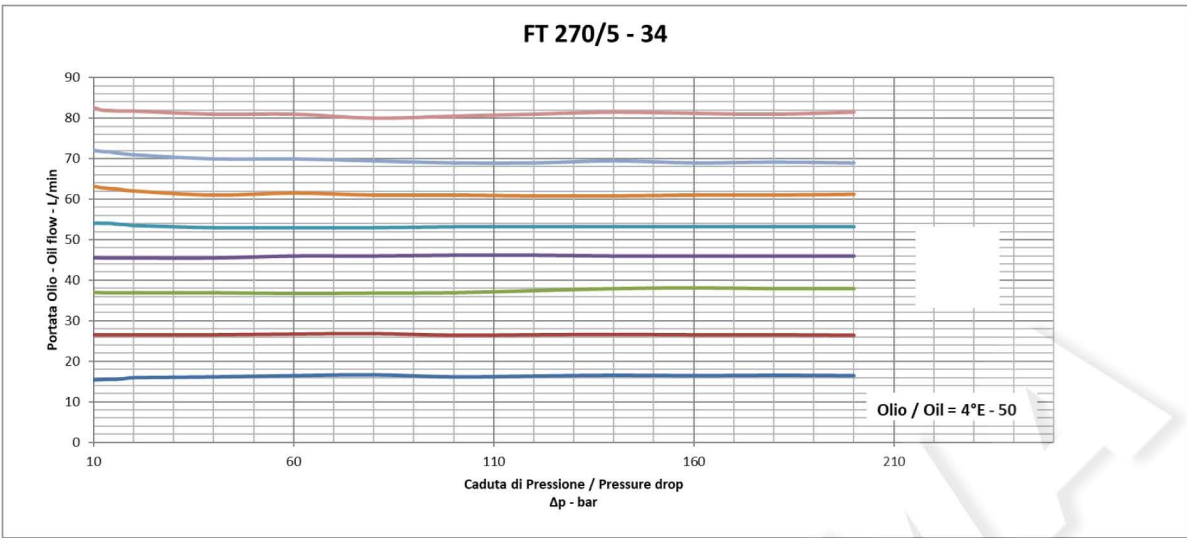
TIPO / TYPE	A UNI 338	B	C	D	E
14	1/4" G	12,5	96	81,5	88,5
38	3/8" G	13	112,5	94,5	103
12	1/2" G	15,5	141,5	112	122
34	3/4" G	17	168	138	150
100	1" G	21	216	175	192

TIPO / TYPE	ØF	G	H	CH	PESO / WEIGHT KG
14	27	15	M20x1	30	0,580
38	33	17	M25x1,5	35	0,940
12	38	18	M30x1,5	45	1,830
34	47	24	M40x1,5	55	3,350
100	58	32	M50x1,5	70	7,000



## Flow rate curves





### FT 270/5

