

Part number:

HYDROMA

HYDRAULICKÉ SYSTÉMY

**HIDROMA
SYSTEMS**

UKŁADY HYDRAULICZNE

HYDROMA

ГИДРАВЛИЧЕСКИЕ СИСТЕМЫ

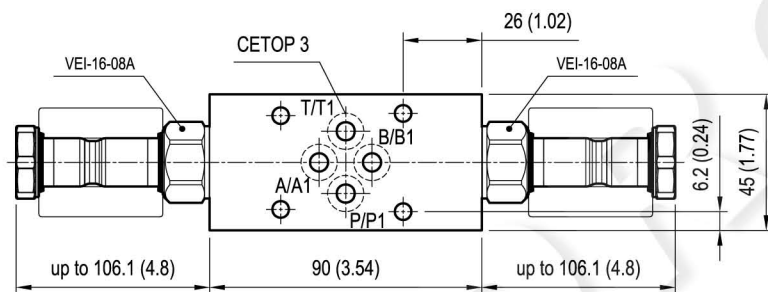
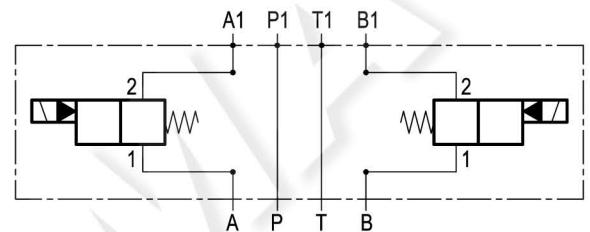
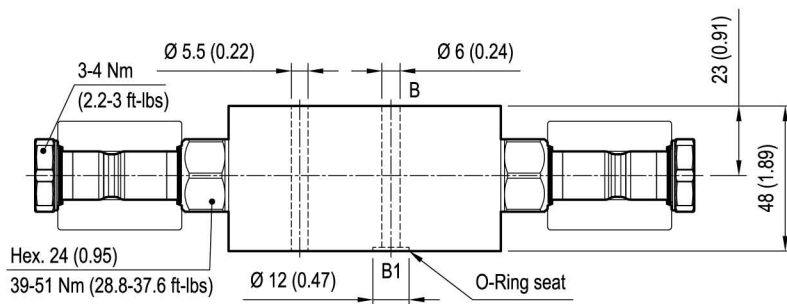
Sandwich valve module with solenoid valve

EM-VEI-16-08A-CETOP 3-A/B

OP.15 - K - 18 - 29 - X - Y

RE 18332-84

Edition: 12.2016

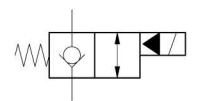


Cartridge schemes (K)

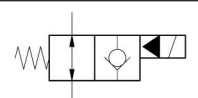
monodirectional type

bidirectional type

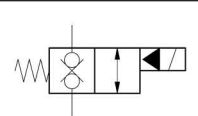
05



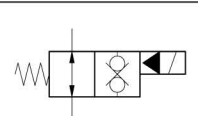
06



31



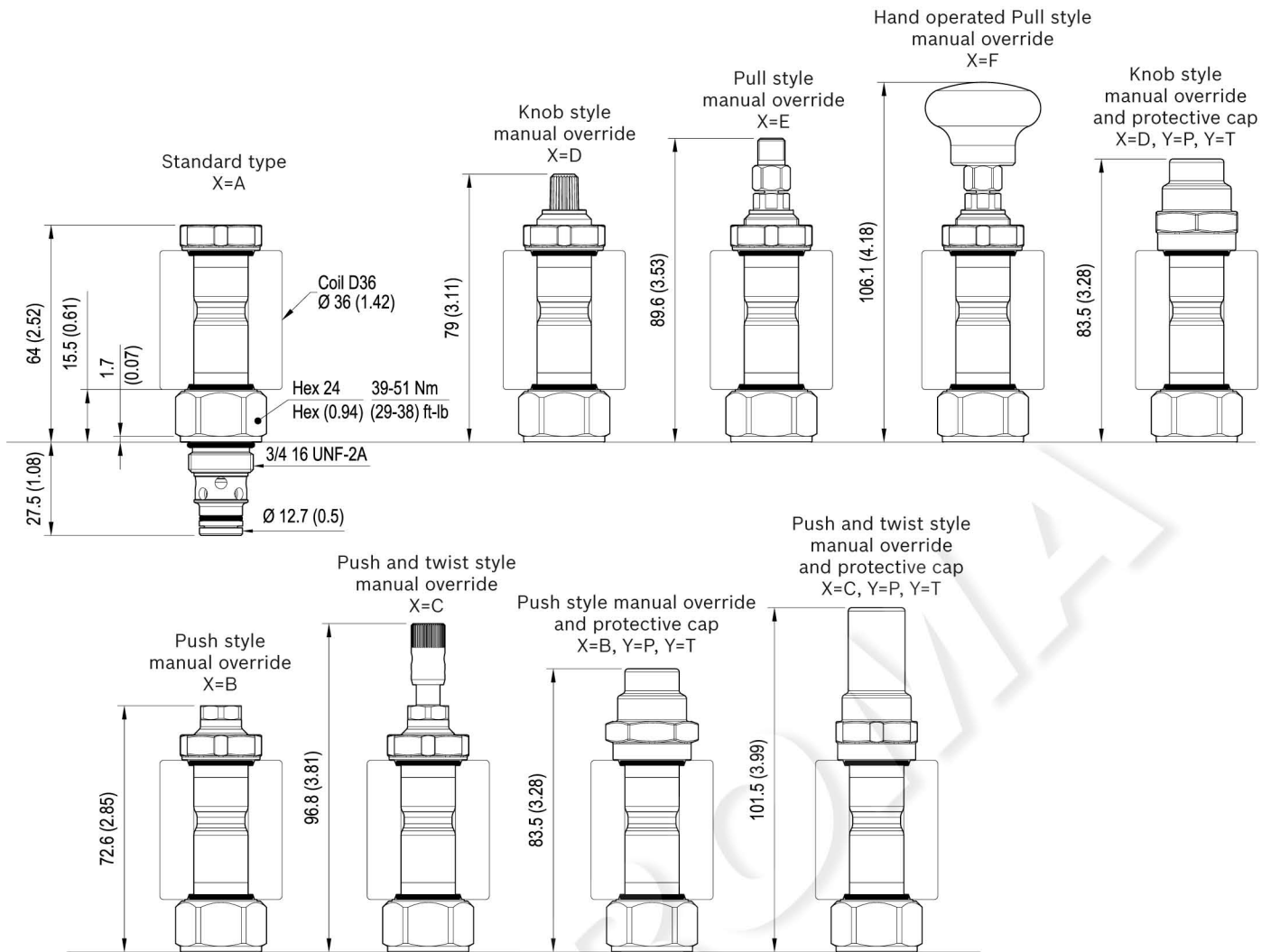
32



[mm (inches)]

Technical data

| | |
|--|------------------------------|
| Max. flow | 40 l/min (11 gpm) |
| Max operating pressure | 210 bar (3000 psi) |
| Ambient temperature range | -30 to 90 °C (-22 to 194 °F) |
| Standard manifold in high strength aluminium. For working pressure up to 350 bar (5000 psi) and for fatigue applications with any working pressure, steel manifolds are available upon request. | |
| Fluids: Mineral-based or synthetics with lubricating properties at viscosities of 20 to 380 mm ² /s (cSt) | |
| MTTFd | 150 years see RE 18350-51 |
| Other technical data | See data sheet 18350-50 |



Cartridge technical data

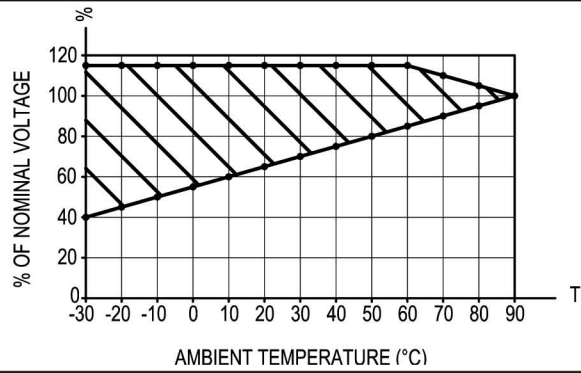
| General | |
|--|--|
| Installation orientation | Unrestricted |
| Ambient temperature range | -30 to 90 °C (-22 to 194 °F) |
| Hydraulic | |
| Max. operating pressure | 350 bar (5000 psi) |
| Flow range | 0.5 - 40 l/min (0.1 - 11 gpm) |
| Max. internal leakage | 5 drops/min. |
| Switching time | Opening ≤ 50 ms |
| | Closing ≤ 100 ms |
| Fluid temperature range | -20 to 80 °C (-4 to 176 °F) |
| Fluids: Mineral-based or synthetics with lubricating properties at viscosities of 20 to 380 mm ² /s (cSt) | |
| Installation torque | 39 - 51 Nm (29 - 38 ft-lbs) |
| Recommended degree of fluid contamination | Nominal value max. 10 µm (NAS 8) ISO 4406 19/17/14 |
| MTTFd | 150 years see RE 18350-51 |
| Cavity | CA-08A-2N see data sheet 18325-70 |
| Other technical data | See data sheet 18350-50 |

| Electrical | |
|---|--------------------------|
| Type of voltage | DC voltage |
| Coil type | D36 |
| Supply voltage | See data sheet 18325-90 |
| Voltage tolerance against ambient temperature | See characteristic curve |
| Power consumption | 20 W |
| Type of protection | See data sheet 18325-90 |
| Note: Coils must be ordered separately | |

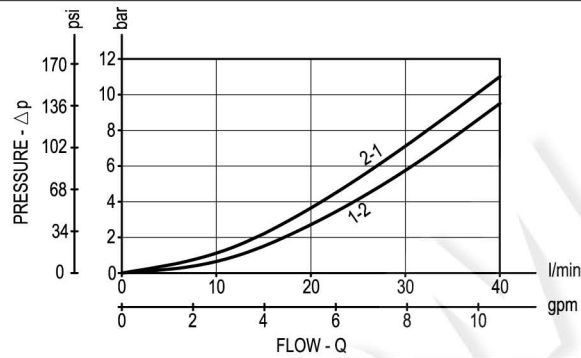
| TAB. 1 | | Manual override options (X) | | | | | |
|-------------------------|---|-----------------------------|--------------|--------------|--------------|--------------|--------------|
| Seal and prot. cap. (Y) | | A | B | C | D | E | F |
| | O | K=all versions | K=06 K=32 | K=06 K=32 | K=05 K=31 | K=05 K=31 | K=05 K=31 |
| | V | K=all versions | K=06 K=32 | K=06 K=32 | K=05 K=31 | K=05 K=31 | K=05 K=31 |
| | P | / | K=06 K=32 | K=06 K=32 | K=05 K=31 | / | / |
| | T | / | K=06 K=32 | K=06 K=32 | K=05 K=31 | / | / |

Characteristic curves

All Versions - Admissible supply voltage Vs. Ambient temperature at 100% duty cycle



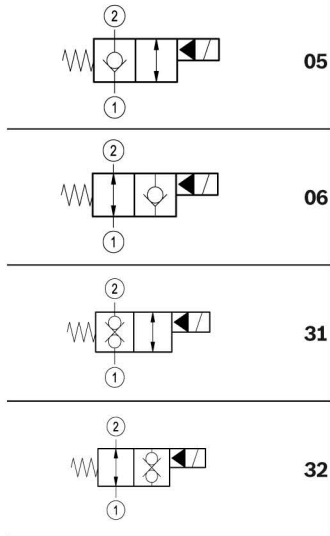
All Versions



Ordering code

| | | | | | |
|-------|---|----|----|---|---|
| OP.15 | K | 18 | 29 | X | Y |
|-------|---|----|----|---|---|

Sandwich valve module with solenoid valve



Cartridge seals and accessories options

- O** = With buna seal
- V** = With Viton seal
- P** = With buna seal and protective cap for override version **B**, **C** and **D**
- T** = With Viton seal and protective cap for override version **B**, **C** and **D**

Cartridge options

- A** = Standard
- B** = Push style manual override
- C** = Push and twist style manual override
- D** = Knob style manual override
- E** = Pull style manual override
- F** = Hand operated pull style manual override

Flange CETOP 3 (DOT3)

Common cavity size 08

Note: for solutions availability (K-X-Y combinations), please refer to TAB.1 on page 2.