

Part number:

**HYDROMA**

HYDRAULICKÉ SYSTÉMY

**HIDROMA
SYSTEMS**

UKŁADY HYDRAULICZNE

HYDROMA

ГИДРАВЛИЧЕСКИЕ СИСТЕМЫ

VALVES FOR HYDRAULIC MOTORS

CONTENTS

Valves for MLHP, MLHR and MLHH type KPBR

Valves for MLHS type KPBS

Valves for MLHT type KPBT

Valves for MLHV type KPBV

Valves for MLHRW and HW type KPBW

Valves for HP and HR type KPBHR...E

Valves for HP and HR type KPBHR...D

Switch valves type KPWR and KPWS

Switch valves type KPWT and KPWW

Crossover Relief Valves

Valves for MLHP, MLHR and MLHH type KP...R

Valves for MLHS type KP...S

Valves for MLHT type KP...T

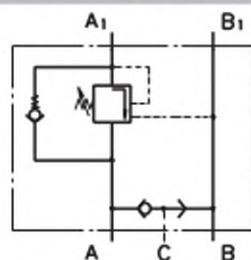
Valves for MLHV type KP...V

Valves for MLHRW and HW type KP...W

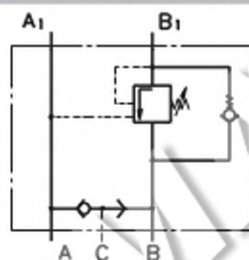
Cross Port Relief Valves

Order Code

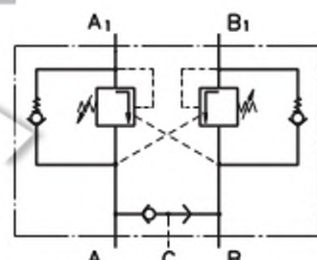
OVERCENTER VALVES WITH BRAKE CONTROL



Single Overcenter Valves
with Brake Control
type KPB ... AE



Single Overcenter Valves
with Brake Control
type KPB ... BE



Dual Overcenter Valves
with Brake Control
type KPB ... D

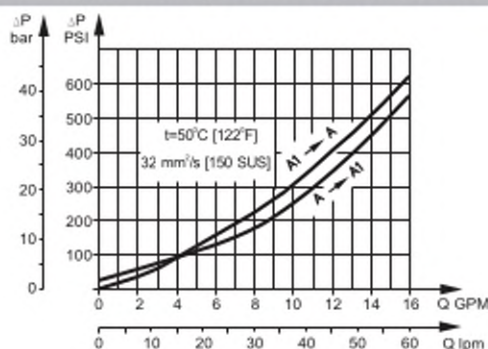
SPECIFICATION DATA

Parameters	Type											
	KPBR...E	KPBS...E	KPBR...D	KPBS...D	KPBW...E	KPBW...D	KPBHR...E	KPBHR...D	KPBT...E	KPBT...D	KPBV...E	KPBV...D
Flow Rate, GPM [lpm]	15.85 [60]						26.4 [100]			52.8 [200]		
Rated PSI Pressure*, [bar]	870+4060 [60+280]						1015+3625 [70+250]					
Pilot Ratio	4,25:1											
Weight, lb [kg]	6.658 [3,020]	6.39 [2,900]	6,746 [3,060]	6,437 [2,920]	7,724 [3,050]	6,923 [3,140]	5,071 [2,300]	5,291 [2,400]	11,905 [5,400]	12,787 [5,800]	20,283 [9,200]	21,495 [9,750]

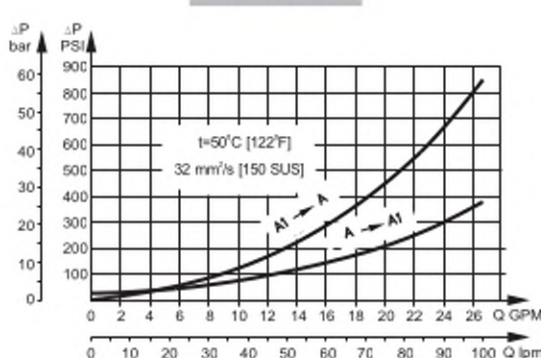
*Pressure Settings are at flow rate of 1.3 GPM [5 lpm] and viscosity 150 SUS [32 mm²/s] at 122° F [50 °C].

PRESSURE LOSSES

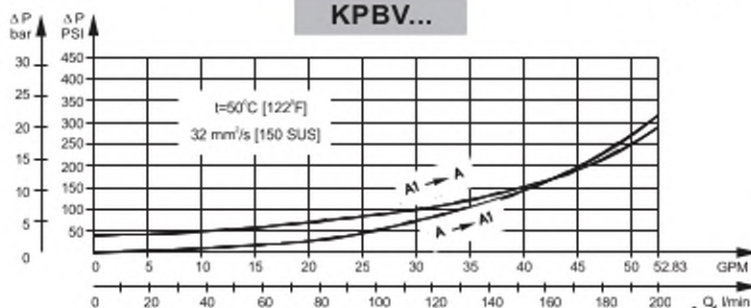
KPBR..., KPBS..., KPBW... and KPBHR...



KPBT...



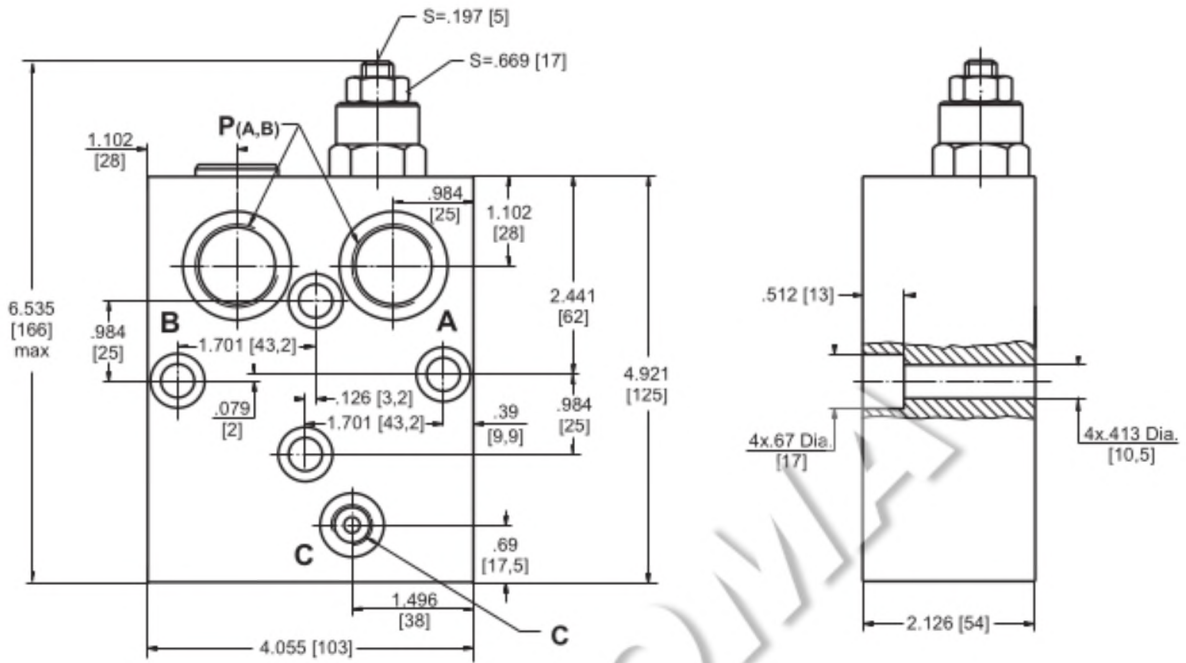
KPBV...



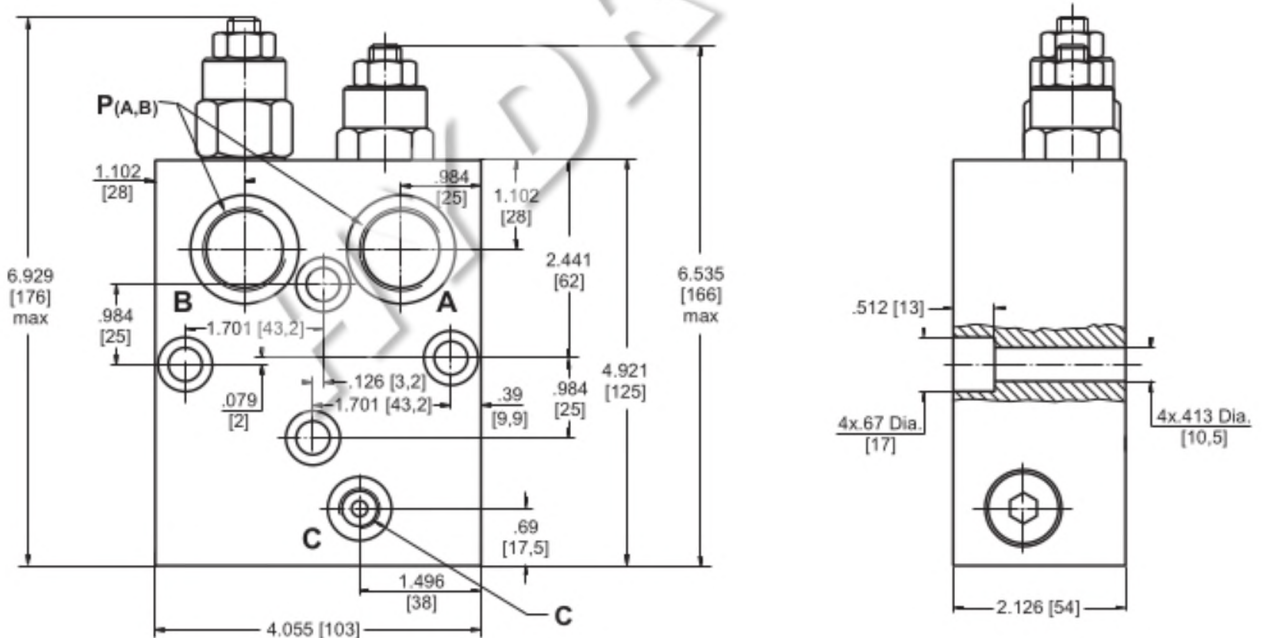


VALVES FOR MLHT HYDRAULIC MOTORS

SINGLE VALVE KPBT-250/1/E...



DUAL VALVE KPBT-250/1/D...



	Thread Ports - P _(A,B)	Thread Port - C
-	G3/4 .67 [17] depth	G1/4 .55 [14] depth
M	M27x2 .67 [17] depth	M14x1,5 .55 [14] depth
A	1 1/16-12 UN O-ring .67 [17] depth	7/16 - 20 UNF O-ring .50 [12,7] depth



Note : KPBT Blocks are installed directly on MLHT Motors with four screws M10x50 - 8.8 DIN 912. Tightening torque 336±310 lb-in [3,5^{+0,3} daNm].



ORDER CODE - OVERCENTER VALVES WITH BRAKE CONTROL

1 2 3 4 5 6 7
K P B - / /

Pos.1 - Housing Type

- R** - Valve block for MP, MR and MH Motors
- S** - Valve block for MS Motors
- W** - Valve block for RW and HW Motors
- T** - Valve block for MT Motors
- V** - Valve block for MV Motors
- HR** - Valve block for HP and HR Motors

Pos.2 - Pressure Range, PSI [bar]

- 250** - 1015+3625 [70+250], Std Setting 250 bar@5 lpm

Pos.3 - Pilot Ratio

- 1** - 4,25:1

Pos.4 - Number of Valves

- D** - Two Valves - Dual
- E** - One Valve - Single (for R and S only)
- AE** - One Valve on line A - Single (for T, V and W only)
- BE** - One Valve on line B - Single (for T, V and W only)

Pos.5 - Threaded Ports

- omit - BSPP thread - ISO 228
- M** - Metric thread - ISO 262
- A** - Unified inch screw threads ANSI B 1.1 - 1982

Pos.6 - Option [Paint]**

- omit - no Paint
- P** - Painted
- PC** - Corrosion Protected Paint

Pos.7 - Design Series

- omit - Factory specified

Notes: * Color at customer's request.

ORDER CODE - SWITCH VALVES

1 2 3 4
K P W

Pos.1 - Housing Type

- R** - Valve block for MP, MR and MH Motors
- S** - Valve block for MS Motors
- T** - Valve block for MT Motors
- V** - Valve block for MV Motors

Pos.2 - Threaded Ports

- omit - BSPP thread - ISO 228
- M** - Metric thread - ISO 262
- A** - Unified inch screw threads ANSI B 1.1 - 1982

Pos.3 - Option [Paint]**

- omit - no Paint
- P** - Painted
- PC** - Corrosion Protected Paint

Pos.4 - Design Series

- omit - Factory specified

Notes: * Color at customer's request.

ORDER CODE - CROSSOVER RELIEF VALVE

1 2 3 4 5 6
K P /

Pos.1 - Number of Valves

- D** - Two Valves - Dual
- E** - One Valve - Single (for R and S only)
- EA** - One Valve on line A - Single (for T, V and W only)
- EB** - One Valve on line B - Single (for T, V and W only)

Pos.2 - Housing Type

- R** - Valve block for MP, MR and MH Motors
- S** - Valve block for MS Motors
- W** - Valve block for RW and HW Motors
- T** - Valve block for MT Motors
- V** - Valve block for MV Motors

Pos.3 - Pressure Range, bar [PSI]

- 100*** - 30+100 [435+1450], Std Setting 100 bar@5 lpm
- 210*** - 50+210 [725+3050], Std Setting 210 bar@5 lpm
- 300*** - 80+300 [1160+4350], Std Setting 250 bar@5 lpm
- 210**** - 80+210 [1160+3050], Std Setting 210 bar@5 lpm
- 100***** - 10+100 [145+1450], Std Setting 100 bar@5 lpm
- 250****** - 20+250 [290+3625], Std Setting 250 bar@5 lpm

Pos.4 - Threaded Ports

- omit - BSPP thread - ISO 228
- M** - Metric thread - ISO 262
- A** - Unified inch screw threads ANSI B 1.1 - 1982

Pos.5 - Option [Paint]****

- omit - no Paint
- P** - Painted
- PC** - Corrosion Protected Paint

Pos.6 - Design Series

- omit - Factory specified

Notes: * Useful for types R and S only.

** Useful for types T only.

*** Useful for types V only.

**** Color at customer's request.

The Valve Blocks are manganese phosphatized as standard.