

Part number:

HYDROMA

HYDRAULICKÉ SYSTÉMY

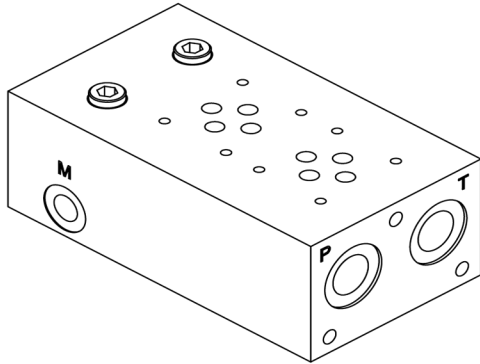
**HIDROMA
SYSTEMS**

UKŁADY HYDRAULICZNE

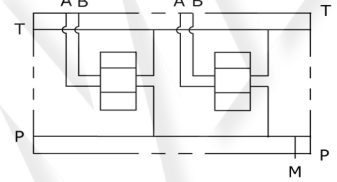
HYDROMA

ГИДРАВЛИЧЕСКИЕ СИСТЕМЫ

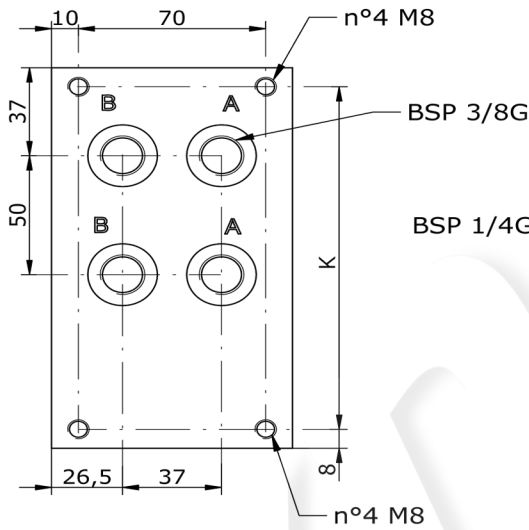
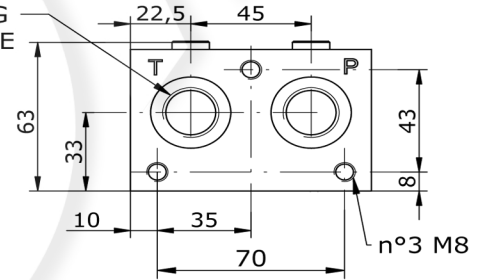
MONOBLOCCO A-B POSTERIORI 3/8", P-T 1/2", CON VALVOLA ELETTRICA OPZIONALE
MONOBLOCK A-B BACK PORTS 3/8" P-T 1/2" WITH OPTIONAL VENTING VALVE



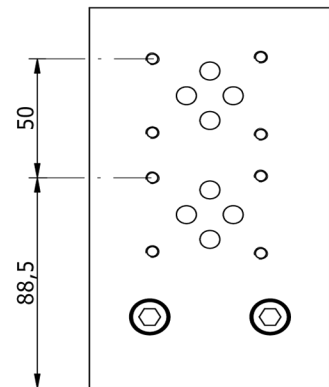
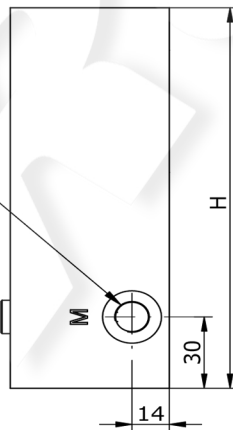
Schema idraulico
Hydraulic diagram



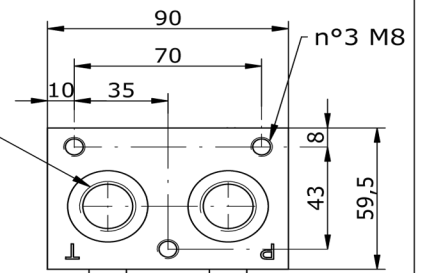
n°2 BSP 1/2G
OR 2106 SIDE



BSP 1/4G



n°2 BSP 1/2G
OR 2106 SIDE

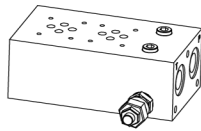


E_ 06 - 13 - 38 - ___ - 0

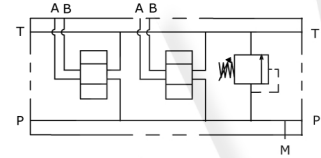
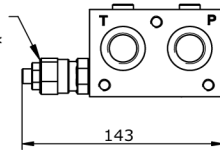
POS.	01	02	03	04	05	06	07	08	09	10
H	110	160	210	260	310	360	410	460	510	560
K	94	144	194	244	294	344	394	444	494	544

MONOBLOCCO A-B POSTERIORI 3/8", P-T 1/2", CON VALVOLA ELETTRICA OPZIONALE
MONOBLOCK A-B BACK PORTS 3/8" P-T 1/2" WITH OPTIONAL VENTING VALVE

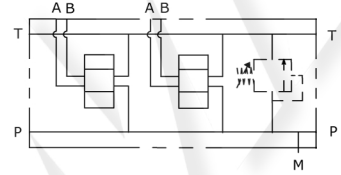
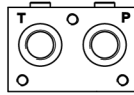
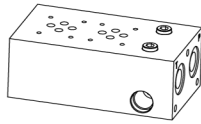
E_06 - 13 - 38 - ___ - 1



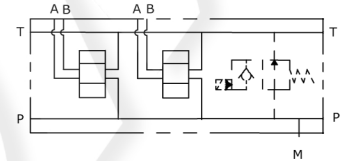
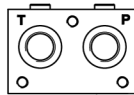
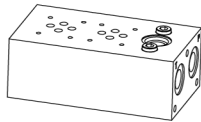
CAVITY C008
DRV-M20-02*



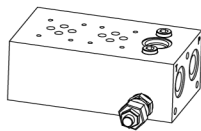
E_06 - 13 - 38 - ___ - 2



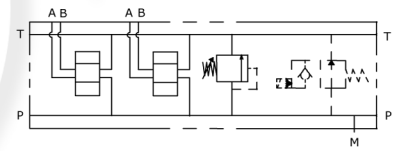
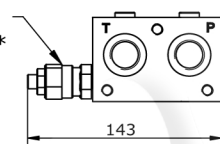
E_06 - 13 - 38 - ___ - 3



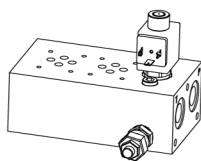
E_06 - 13 - 38 - ___ - 4



CAVITY C008
DRV-M20-02*

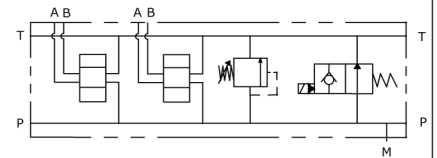
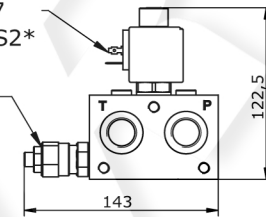


E_06 - 13 - 38 - ___ - 5

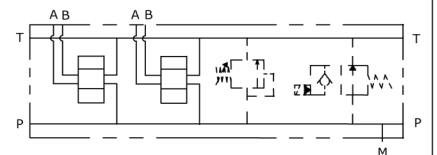
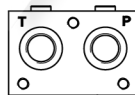
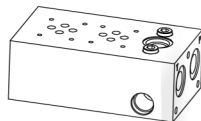


CAVITY C007
SVCP-S08-TS2*

CAVITY C008
DRV-M20-02*



E_06 - 13 - 38 - ___ - 6



E_06 - 13 - 38 - _____

S = STEEL
A = ALUMINUM

MOUNTING POSITIONS: 01÷10

- 0 = WITHOUT RELIEF VALVE
- 1 = WITH RELIEF VALVE
- 2 = RELIEF VALVE READY
- 3 = VENTING VALVE READY
- 4 = WITH R.V. AND V.V. READY
- 5 = WITH R.V. AND V.V.
- 6 = V.V. READY AND R.V. READY

- 0 = WITHOUT R.V.
- 1 = 5-50 BAR
- 2 = 20-110 BAR
- 3 = 50-220 BAR
- 4 = 100-350 BAR
- 5 = 100-420 BAR

- 0 = WITHOUT RELIEF VALVE
- H = HEX. HEAD SCREW
- K = KNOB
- C = COVER CAP
- I = NOT ADJUSTABLE



SEALS
N = BUNA
V = VITON

VENTING VALVE
000 = WITHOUT V.V.
TS2 = NORMALLY OPEN

VENTING VALVE
0 = NO MANUAL OVERRIDE
3 = PUSH PIN
4 = PUSH BOTTOM
5 = HEX. ALLEN

CONNECTOR TYPE
0 = WITHOUT COIL
C = CAVI / LEADS
D = DIN 43650
G = DEUTSCH DT04-2P
A = AMP JUNIOR

TENSIONE / VOLTAGE
000 = WITHOUT COIL
D12 = 12 VDC
D24 = 24 VDC
220 = 220 RAC