

Part number:

**HYDROMA**

HYDRAULICKÉ SYSTÉMY

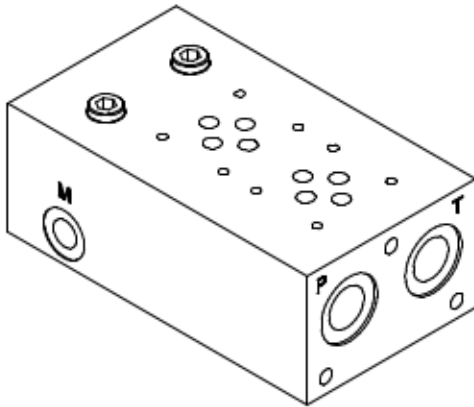
**HIDROMA**  
SYSTEMS

UKLADY HYDRAULICZNE

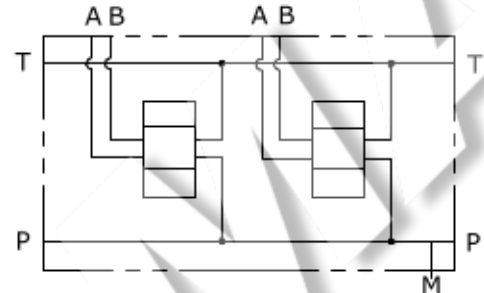
**HYDROMA**

ГИДРАВЛИЧЕСКИЕ СИСТЕМЫ

**MONOBLOCCO A-B POSTERIORI 1/2", P-T 1/2" CON VALVOLA ELETTRICA OPZIONALE**  
**MONOBLOCK A-B REAR PORTS 1/2" P-T 1/2" WITH OPTIONAL VENTING VALVE**

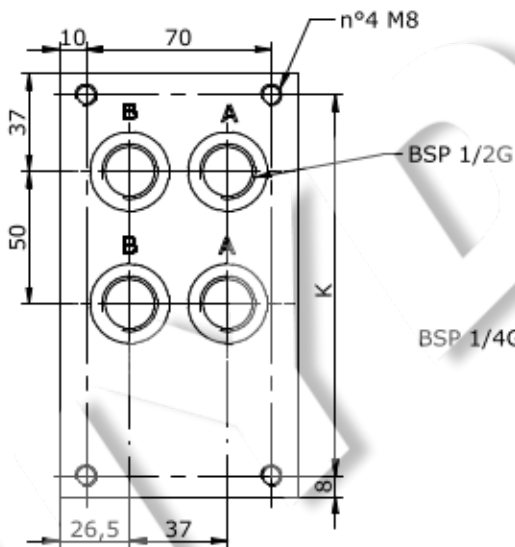
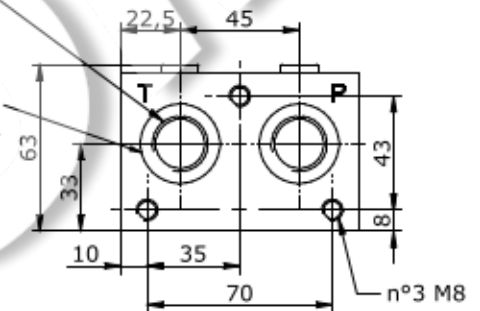


Schema idraulico  
Hydraulic diagram

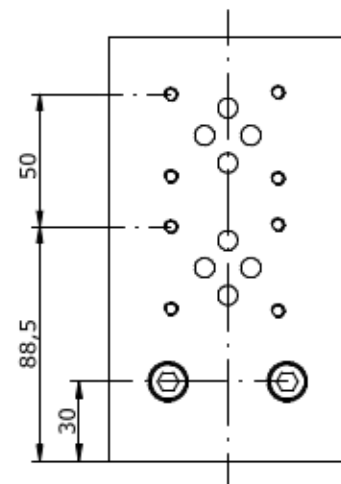
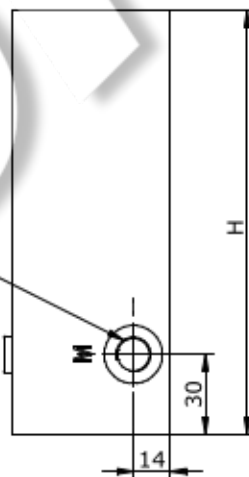


n°2 BSP 1/2G

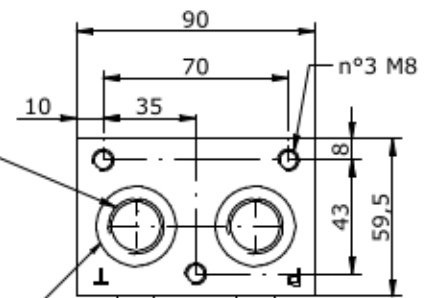
INTERFACCIA AUSILIARE SU ELEMENTI AGGIUNTIVI (USARE OR2106)  
INTERFACE FOR ADDITIONAL AUXILIARY ELEMENTS (USE OR2106)



BSP 1/4G



n°2 BSP 1/2G



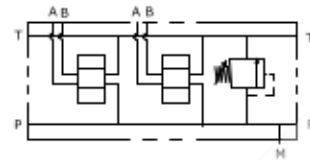
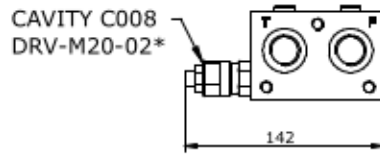
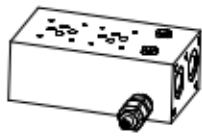
INTERFACCIA AUSILIARE SU ELEMENTI AGGIUNTIVI (USARE OR2106)  
INTERFACE FOR ADDITIONAL AUXILIARY ELEMENTS (USE OR2106)

**E\_06 - 13 - 12 - \_\_\_ - 0**

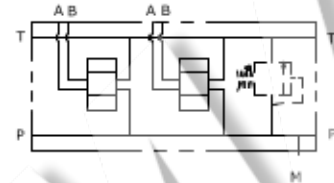
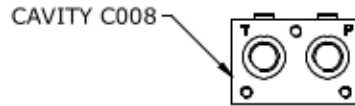
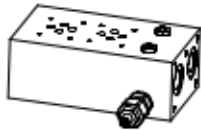
POS.	01	02	03	04	05	06	07	08	09	10
H	110	160	210	260	310	360	410	460	510	560
K	94	144	194	244	294	344	394	444	494	544

**MONOBLOCCO A-B POSTERIORI 1/2", P-T 1/2" CON VALVOLA ELETTRICA OPZIONALE**  
**MONOBLOCK A-B REAR PORTS 1/2" P-T 1/2" WITH OPTIONAL VENTING VALVE**

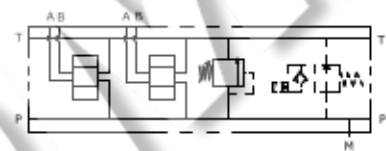
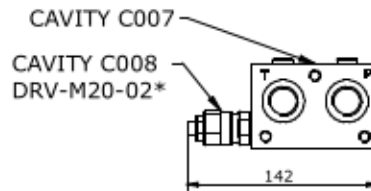
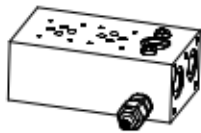
**E\_06 - 13 - 12 - \_\_\_ - 1**



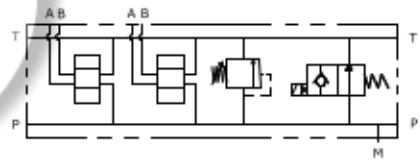
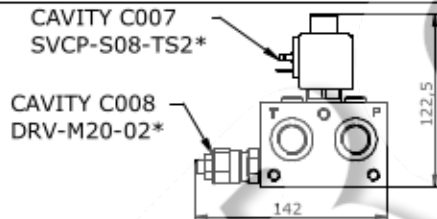
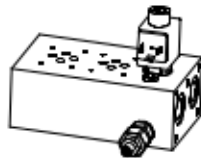
**E\_06 - 13 - 12 - \_\_\_ - 2**



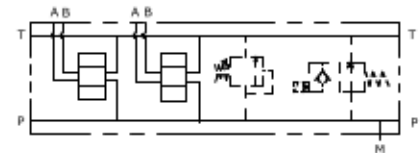
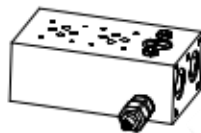
**E\_06 - 13 - 12 - \_\_\_ - 4**



**E\_06 - 13 - 12 - \_\_\_ - 5**



**E\_06 - 13 - 12 - \_\_\_ - 6**



**E\_06 - 13 - 12 - \_\_\_\_\_**

**MOUNTING POSITIONS: 01÷10**

**S = STEEL**  
**A = ALUMINIUM**

**0 = WITHOUT RELIEF VALVE**  
**1 = WITH RELIEF VALVE**  
**2 = RELIEF VALVE READY**  
**4 = WITH R.V. AND V.V. READY**  
**5 = WITH R.V. AND V.V.**  
**6 = V.V. READY AND R.V. READY**

**0 = WITHOUT R.V.**  
**1 = 5-55 bar**  
**2 = 25-110 bar**  
**3 = 50-215 bar**  
**4 = 100-350 bar**  
**5 = 100-420 bar**

**0 = WITHOUT RELIEF VALVE**  
**H = HEX. HEAD SCREW**    **K = KNOB**    **C = COVER CAP NOT ADJUSTABLE**

**SEALS**  
**N = BUNA**  
**V = VITON**

**VENTING VALVE**  
**000 = WITHOUT V.V.**  
**TS2 = NORMALLY OPEN**

**CONNECTOR TYPE**  
**0 = WITHOUT COIL**  
**C = CAVI / LEADS**  
**D = DIN 43650**  
**G = DEUTSCH DT04-2P**  
**A = AMP JUNIOR**

**VENTING VALVE**  
**0 = NO MANUAL OVERRIDE**  
**3 = PUSH PIN**  
**4 = PUSH BOTTON**  
**5 = HEX. ALLEN**

**TENSIONE / VOLTAGE**  
**000 = WITHOUT COIL**  
**D12 = 12 VDC**  
**D24 = 24 VDC**  
**220 = 220 RAC**