

Part number:

**006-10803**

**HYDROMA**

HYDRAULICKÉ SYSTÉMY

**HIDROMA  
SYSTEMS**

UKŁADY HYDRAULICZNE

**HYDROMA**

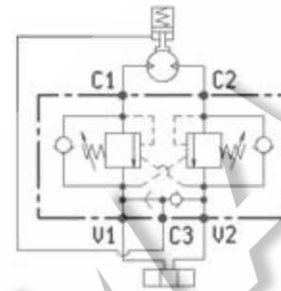
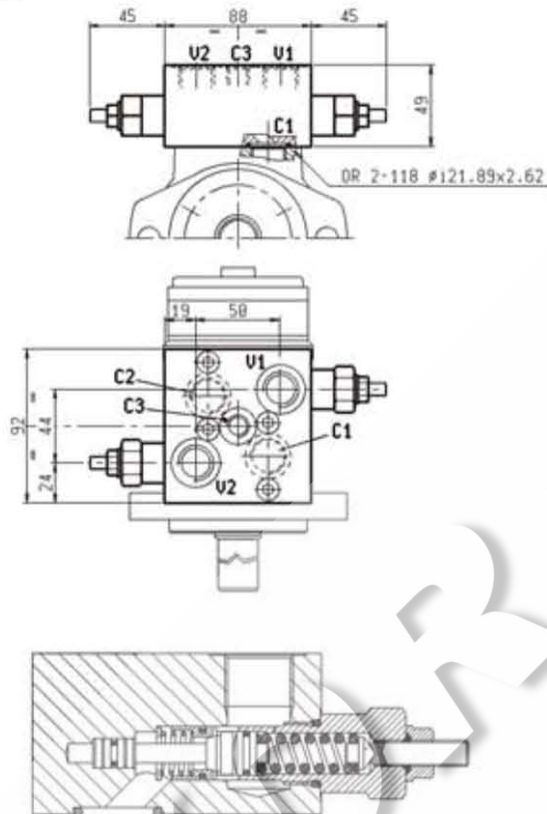
ГИДРАВЛИЧЕСКИЕ СИСТЕМЫ

BILANCIAMENTO, DOPPIO EFFETTO, SERIE "30", SBLOCCAGIO FRENO  
DUAL PILOT ASSISTED, SERIES "30", BRAKE RELEASE PORT, OVERCENTRE

**UBSODE30VFFMOMP - 1220 - 11 : 1A**

**05.44.21.85.03.20.00.A**

Motor:  
DANFOSS / WHITE  
Type:  
OMP-OHR / HS-RS



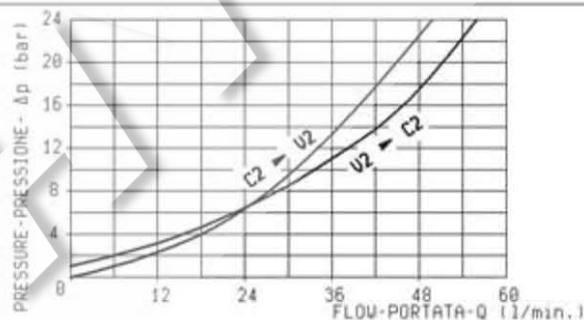
Pressione di lavoro max.  
Max. working pressure 210 bar

Portata max.  
Flow max. 60 l/min

Peso  
Weight. 1 Kg

Cappuccio di piombatura cod. 110423002  
Sealing cap cod. 110423002

Taratura della valvola: almeno 1,3 volte superiore alla pressione indotta dal carico  
Pressure setting: at least 1,3 times the load induced pressure



**RAPPORTO DI PILOTTAGGIO  
PILOT RATIO**

11 : 1

**MOLLE/SPRINGS**

Campo taratura min-max bar Adj.press. range bar	Incremento pressione bar/giro vite Pressure increase bar/turn	Taratura standard bar (0-5 l/min) Std. setting bar (made at 5 l/min)	Codice ordinazione Ordering code	Colore Colour
60-250	70	250	03.51.01.155	

**ATTACCHI/PORT SIZE**

U1 - U2	C3
G 1/2	G 1/4