

Part number:

HYDROMA

HYDRAULICKÉ SYSTÉMY

**HIDROMA
SYSTEMS**

UKŁADY HYDRAULICZNE

HYDROMA

ГИДРАВЛИЧЕСКИЕ СИСТЕМЫ

Tipo /Type

FPRD-*.*.*.*

Sez./Section

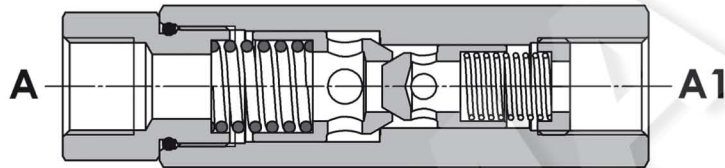
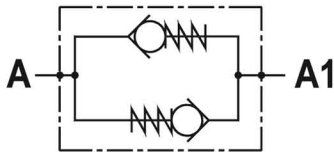
D

Pag./Page

200/1

**Valvola a ritegni contrapposti, montaggio in linea
Bi-directional in line poppet check valve**

Rev.01-2010/02



SPECIFICHE TECNICHE

Materiali: corpo in acciaio. I ritegni sono in acciaio trattato termicamente. La superficie esterna è protetta mediante zincatura.

Portata: fino a 85 l/min

Pressione max.: 350 bar

Pressione di apertura: standard A-A1: 0.5 bar, A1-A: 8 bar

TECHNICAL SPECIFICATIONS

Materials: body is steel made. Guided poppets are in hardened steel. External surface is zinc plated.

Rated flow: up to 85 l/min

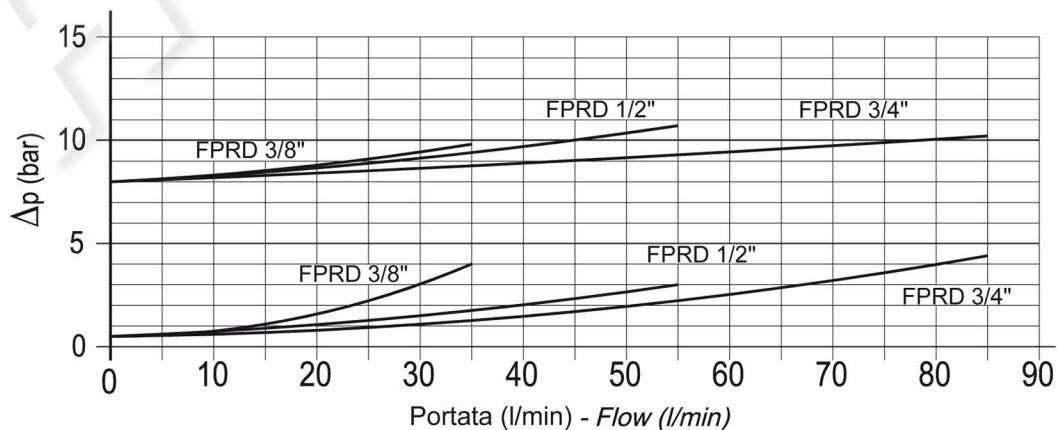
Max. pressure: 350 bar, see data sheet

Cracking pressure: A-A1: 0.5 bar, A1-A: 8 bar standard

DIAGRAMMA PERDITE DI CARICO - PRESSURE DROP CURVES

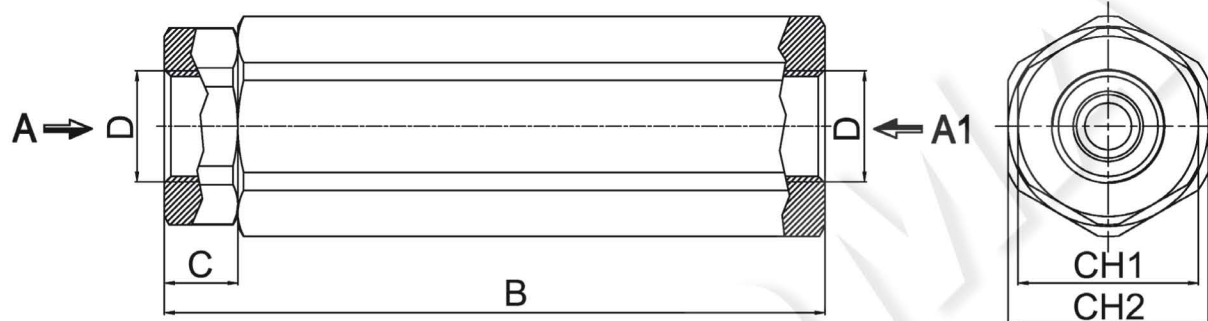
Viscosità olio 24 mm²/sec. (3,5 °E)
Temperatura 50 °C

Oil viscosity 24 mm²/sec. (3,5 °E)
Temperature 50 °C



Valvola a ritegni contrapposti, montaggio in linea
Bi-directional in line poppet check valve

Rev.01-2010/02



TIPO TYPE	PORTATA MAX. MAX FLOW	PRESSIONE MAX. MAX PRESSURE	B	C	D	CH1	CH2	PESO WEIGHT
	L/MIN	BAR	mm	mm	BSPP	mm	mm	Kg
FPRD 3/8	35	350	99	11	3/8	27	30	0.455
FPRD 1/2	55	350	127	21	1/2	30	32	0.592
FPRD 3/4	85	350	135.5	14	3/4	42	46	1.426

ESEMPIO DI ORDINAZIONE - ORDERING CODE EXAMPLE

F P R D **3 / 8** * * *

3/8 - 3/8" BSPP
 * 1/2 - 1/2" BSPP
 3/4 - 3/4" BSPP
 Connessioni - Port sizes

Taratura - Setting A1 → A
 * Omettere se 8 bar - Omit if 8 bar
 Altre tarature disponibili a richiesta
 Other settings available on request

Guarnizioni - Seals:
 V=Viton *
 Omettere se BUNA-N - Omit if BUNA-N

Taratura - Setting A → A1
 Omettere se 0.5 bar - Omit if 0.5 bar *
 Altre tarature disponibili a richiesta
 Other settings available on request