

Part number:

006-10743

HYDROMA

HYDRAULICKÉ SYSTÉMY

**HIDROMA
SYSTEMS**

UKŁADY HYDRAULICZNE

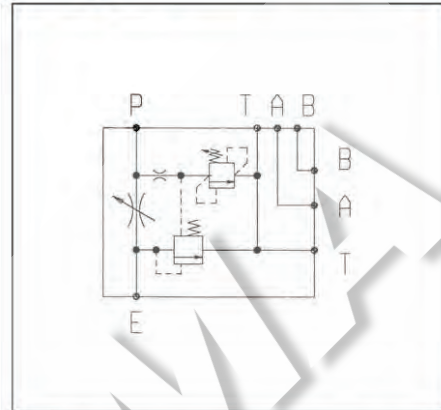
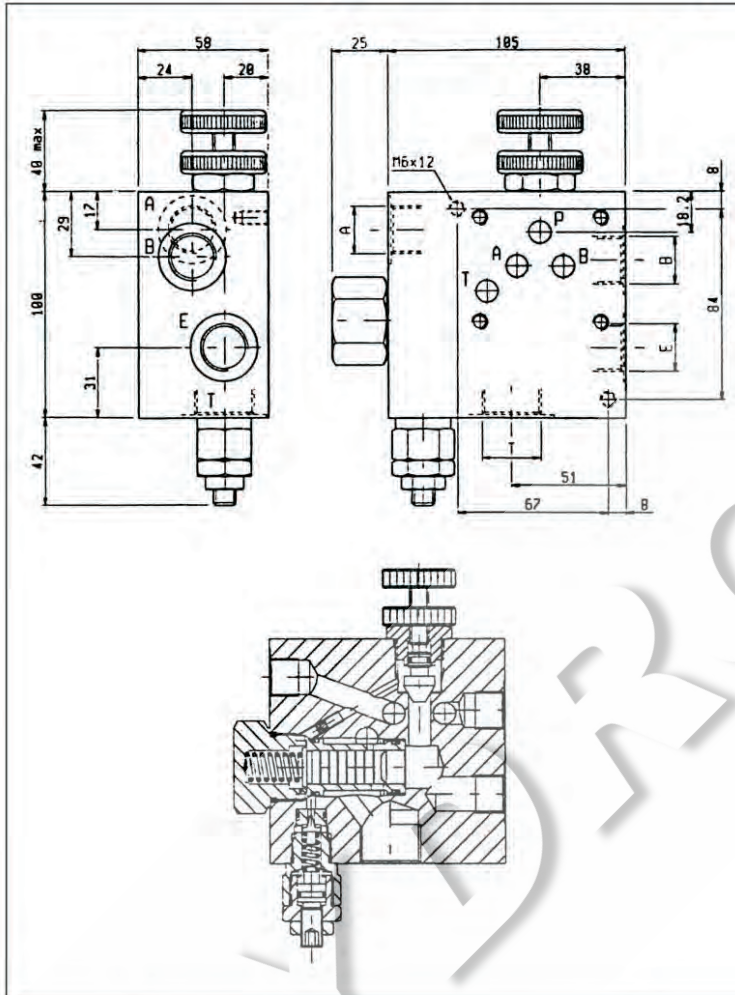
HYDROMA

ГИДРАВЛИЧЕСКИЕ СИСТЕМЫ

**REGOLATORI DI FLUSSO, 3 VIE COMPENSATI
THREE-WAY TYPE PRESSURE COMPENSATED FLOW REGULATORS**

VRFC3-VS10-CETOP 5 (NG10)

OM.33.08 - X - Y



DATI TECNICI / TECHNICAL DATA

Pressione di lavoro max. 210 bar
Max. working pressure

Valvola di massima pressione regolabile da 10 a 210 bar. Taratura standard 210 bar
Adjustable relief valve: range 10-210 bar. Standard setting 210 bar.

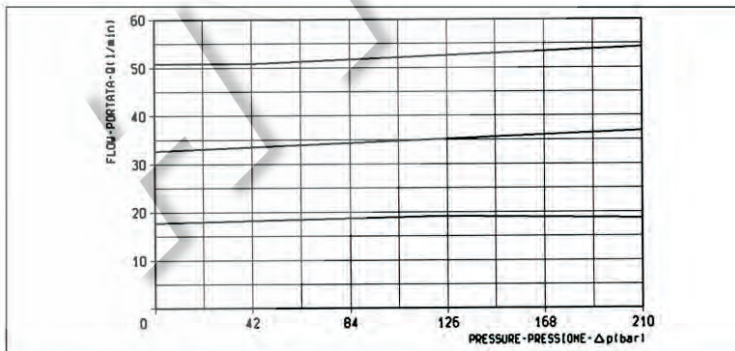
QE = Portata max. in entrata "E" 90 l/min
QE = Max. admitted inlet flow "E" port




QR = Portata max. in uscita regolata "R" 55 l/min
QR = Max. delivery in regulated flow "R" port

Peso 1.8 kg
Weight

Classe di pulizia dell'olio: almeno 18/14 ISO 4406 (9 NAS-1638).
Fluid cleanliness class: 18/14 ISO 4406 (9 NAS-1638) or better.

Campo di regolazione portata: 0+3 giri.
Flow range adjustment: 0+3 turns.



X	REGOLAZIONI ADJUSTMENTS
70	volantino e controvolantino handknob and locknut 
80	vite screw and locknut 
40	manopola graduata graduated handknob 

Y	ATTACCHI / PORT SIZE	
	A-B-E	T
03	G 1/2	G 3/4