

Part number:

**HYDROMA**

HYDRAULICKÉ SYSTÉMY

**HIDROMA  
SYSTEMS**

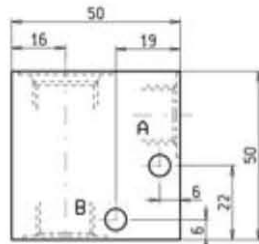
UKŁADY HYDRAULICZNE

**HYDROMA**

ГИДРАВЛИЧЕСКИЕ СИСТЕМЫ

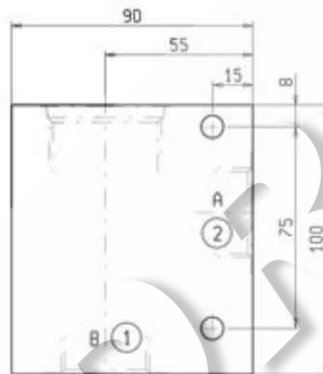
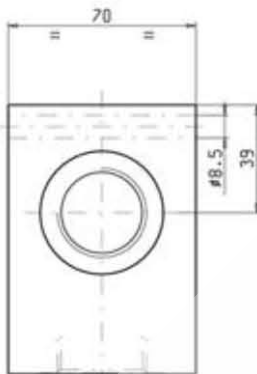
**STANDARD MANIFOLDS**

**2 WAY ALUMINUM**



CAVITY **019-E**  
Dimensions on page 7.01.12

ORDERING CODE	PORTS A - B	WEIGHT Kg
OC.10.09.103	G 1/4	0.150
OC.10.09.054	G 3/8	0.150



CAVITY **004**  
Dimensions on page 1.11.96

ORDERING CODE	PORTS A - B	WEIGHT Kg
OC.10.09.040	G 1	1.200
OC.10.09.041	G 1-1/4	1.200

**MAX. PRESSURE 250 bar**

**FEATURES**

- Standard manifolds in high-strength aluminum TA-7020 for working pressures up to 250 bar.