

Part number:

**006-10760**

**HYDROMA**

HYDRAULICKÉ SYSTÉMY

**HIDROMA  
SYSTEMS**

UKŁADY HYDRAULICZNE

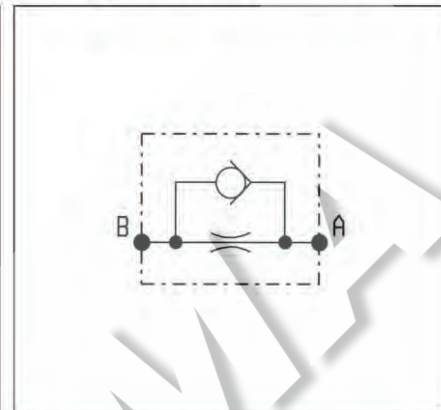
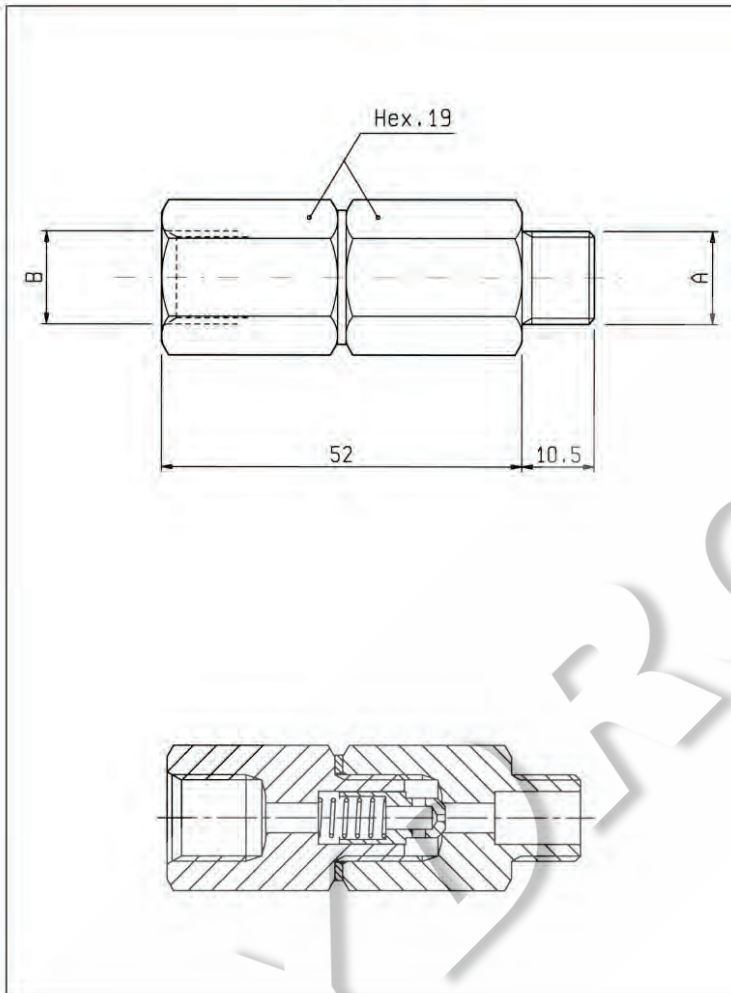
**HYDROMA**

ГИДРАВЛИЧЕСКИЕ СИСТЕМЫ

**STROZZATORI CON UNIDIREZIONALE  
ONE WAY RESTRICTORS**

**VF-MF**

**04.46.03.00 - Y - Z**



**DATI TECNICI / TECHNICAL DATA**

Coppia di serraggio Installation torque	33-37 Nm
Pressione di lavoro max. Max. working pressure	350 bar
Portata max. in flusso libero (A-B) Flow max. free flow (A-B)	10 l/min
Peso Weight	0.10 kg

Z	09	06	00	07	10	12	11	03	08	05	01
Diaframma calibrato Calibrated orifice	∅ 0.3 mm*	∅ 0.4 mm	∅ 0.5 mm	∅ 0.6 mm	∅ 0.7 mm	∅ 0.8 mm	∅ 0.9 mm	∅ 1.0 mm	∅ 1.3 mm	∅ 1.5 mm	∅ 1.75 mm

\* Foro ∅ 0.5 con filo ∅ 0.4 mm  
\* Hole ∅ 0.5 with ∅ 0.4 mm wire

Y	ATTACCHI / PORT SIZE A-B	
	09	G 1/4