

Part number:

## RCV HYDRAULIC REMOTE CONTROL ONE SERVICE PORT

RCV is a general purpose single user remote control. It can be delivered with simple spring centering control, 360° regulating handle holding the control position or with pedal control. In rest position, the hydraulic remote control is held in neutral by return spring; inlet port P is closed and ports are connected to tank port T. By selecting control, plunger compresses return spring and reaction spring; consequently it shifts spool and opens connection holes between inlet port P and service ports. This causes a pressure increase on service ports that is proportional to the control stroke and the reaction spring.



### TECHNICAL SPECIFICATIONS

Max pressure: **100 bar**

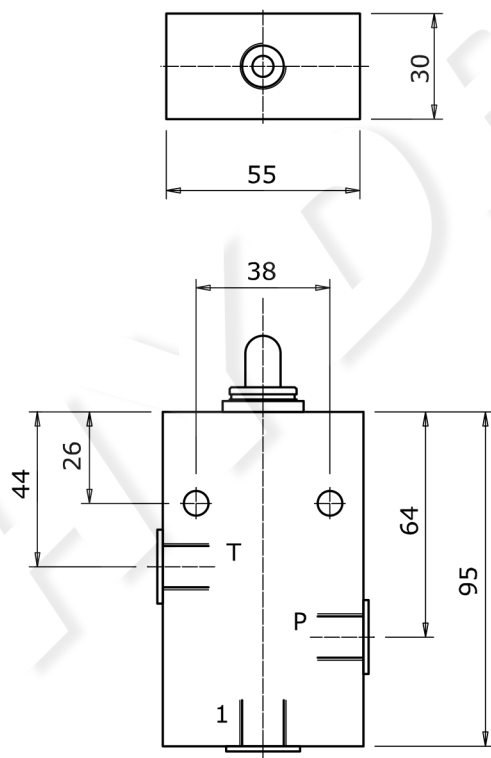
Oil capacity: **12 l/min**

Weight: **1 Kg**

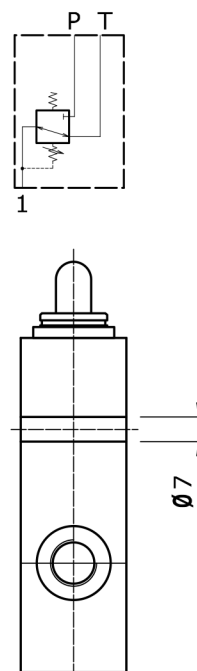
### APPLICATIONS

Forklifts, Tractors

### DIMENSIONS

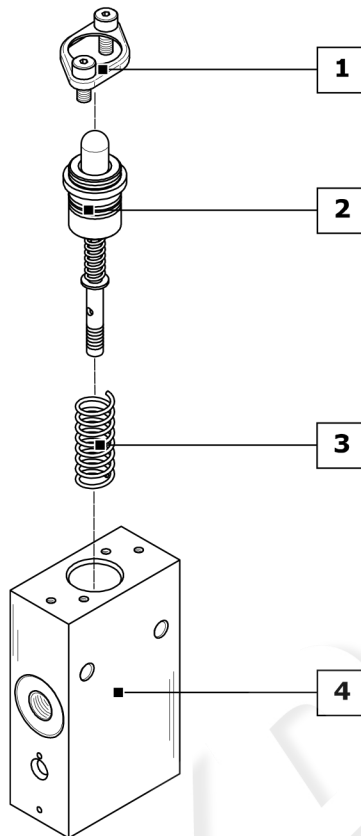


### HYDRAULIC SCHEMA



**ORDER EXAMPLE = RCV: 01V - A01 - MA - RA G02**

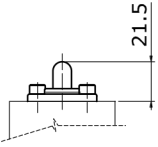
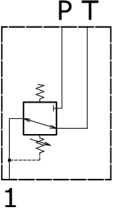
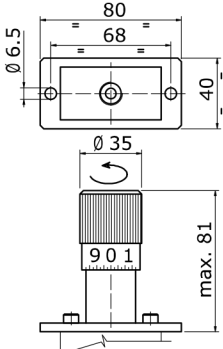
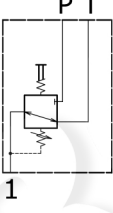
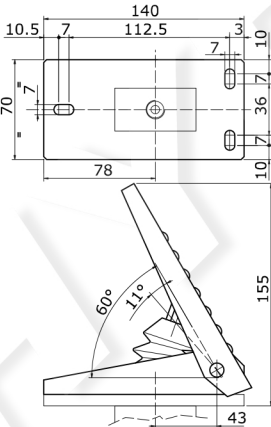
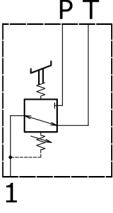
- RCV product type \_\_\_\_\_
- 1 CONTROL CLASSIFICATION:** \_\_\_\_\_
- 01V** control type \_\_\_\_\_
- 2 METERING CURVE:** \_\_\_\_\_
- A01** curve type \_\_\_\_\_
- 3 RETURN SPRING:** \_\_\_\_\_
- MA** return spring type \_\_\_\_\_
- 4 BODY ARRANGEMENT:** \_\_\_\_\_
- RA** body specification \_\_\_\_\_
- G02** body thread \_\_\_\_\_



<b>1</b>	<b>CONTROL CLASSIFICATION:</b> (page 60)
<b>00H</b>	Without control with return spring in neutral position
<b>01V</b>	Wheel operated hydraulic remote control rotated 360° with stopping in each position
<b>01S</b>	Foot pedal with return spring in neutral position
<b>2</b>	<b>METERING CURVE:</b> (page 70)
<b>A01</b>	Linear metering curve with step
<b>B01</b>	Linear metering curve without step
<b>C01</b>	Broken line metering curve with step
<b>D01</b>	Broken line metering curve without step
<b>3</b>	<b>RETURN SPRING:</b> (page 79)
<b>MA</b>	Preload 25 N - End stroke load 48 N
<b>MB</b>	Preload 14 N - End stroke load 27 N
<b>MC</b>	Preload 73 N - End stroke load 135 N
<b>MD</b>	Preload 89 N - End stroke load 169 N
<b>4</b>	<b>BODY ARRANGEMENT:</b> (page 61)
<b>RA G02</b>	Standard Body (G 1/4 ports)
<b>RA U02</b>	Standard Body (9/16"-18 UNF ports)

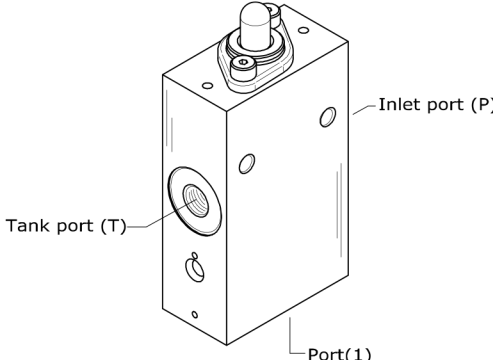
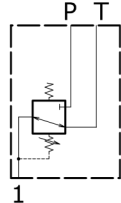
**CONTROL KIT CLASSIFICATION**

All controls installed on the foot pedal RCV are interchangeable: the controls shown correspond to standard configurations; for different applications contact our Commercial Dept.

Code	Dimensions	Schema	Description
00H			<p>Without control with return spring in neutral position</p>
01V			<p>Wheel operated hydraulic remote control rotated 360° with stopping in each position</p>
01S			<p>Foot pedal with return spring in neutral position (standard)</p>

**BODY ARRANGEMENT**

The hydraulic remote control RCV has only one setting body, the only variable is represented by a different thread.

Code	Configuration	Schema	Description
<b>RA G02</b>			Standard body with ports G 1/4
<b>RA U02</b>			Standard body with ports 9/16" - 18 UNF