

Part number:

HYDROMA

HYDRAULICKÉ SYSTÉMY

**HIDROMA
SYSTEMS**

UKŁADY HYDRAULICZNE

HYDROMA

ГИДРАВЛИЧЕСКИЕ СИСТЕМЫ

Dual counterbalance, vented

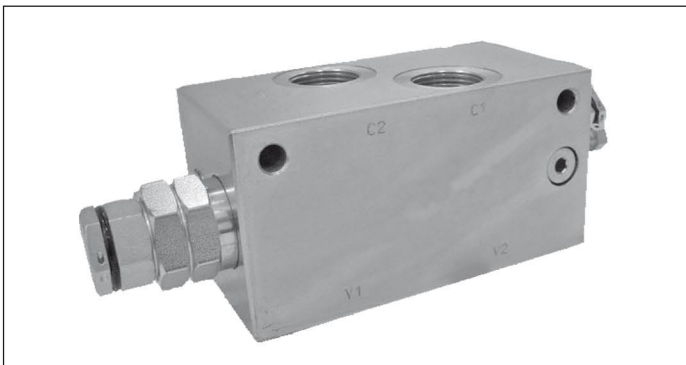
A-VBSO-DE-CCAP-33

08.44.94 - X - Y - Z

RE 18307-70

Edition: 03.2016

Replaces: 08.2010



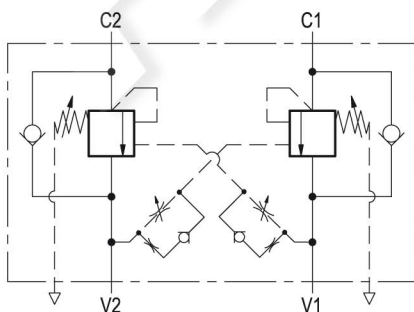
Technical data

Max. operating pressure	410 bar (5945 psi)
Max. flow	150 l/min. (40 gpm)
Weight	4.9 kg (10.8 lbs)
Manifold material	Zinc plated steel
Fluid	Mineral oil (HL, HLP) according DIN 51524
Fluid temperature range	-30 °C to 100 (-22 to 212 °F)
Viscosity range	5 to 800 mm ² /s (cSt)
Recommended degree of fluid contamination	Class 19/17/14 according to ISO 4406
MTTFd	150 years see 18350-51
Other technical data	see data sheet 18350-50
Relief setting:	at least 1.3 times the highest expected load.

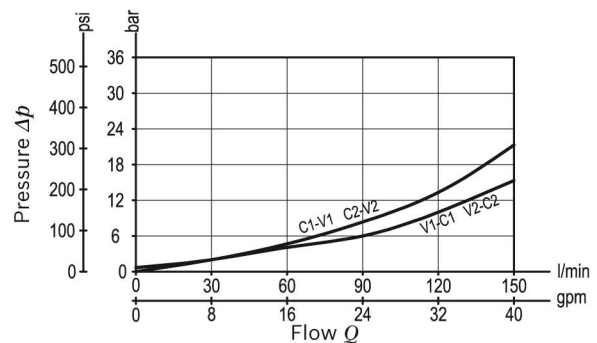
Note: for applications outside these parameters, please consult us.

Description

It provides static and dynamic control of load by regulating the flow IN and OUT of the actuator, through ports C1 and C2. This valve module includes 2 sections, each one composed by a check and a relief valve pilot assisted by pressure in the opposite line: the check section allows free flow into the actuator, then holds the load against reverse movement; with pilot pressure applied at the line across, the pressure setting of the relief is reduced in proportion to the stated ratio until opening and allowing controlled reverse flow. The relief spring chambers are vented to air: relief and piloted opening are independent of back-pressure at V1 or V2.



Characteristic curve



Ordering code


08.44.94	X	Y	Z
-----------------	----------	----------	----------

Dual counterbalance, vented	
Pilot ratio	
03	4.1

Port sizes	V1 - V2	C1 - C2	
04	G 3/4	G 3/4	

SPRINGS			
	Adj. pressure range bar (psi)	Pres. increase bar/turn (psi/turn)	Std. setting Q=5 (l/min) bar (psi)
35	150-350 (2175-5000)	110 (1595)	350 (5000)

Pressure setting up to 410 bar: code on request.

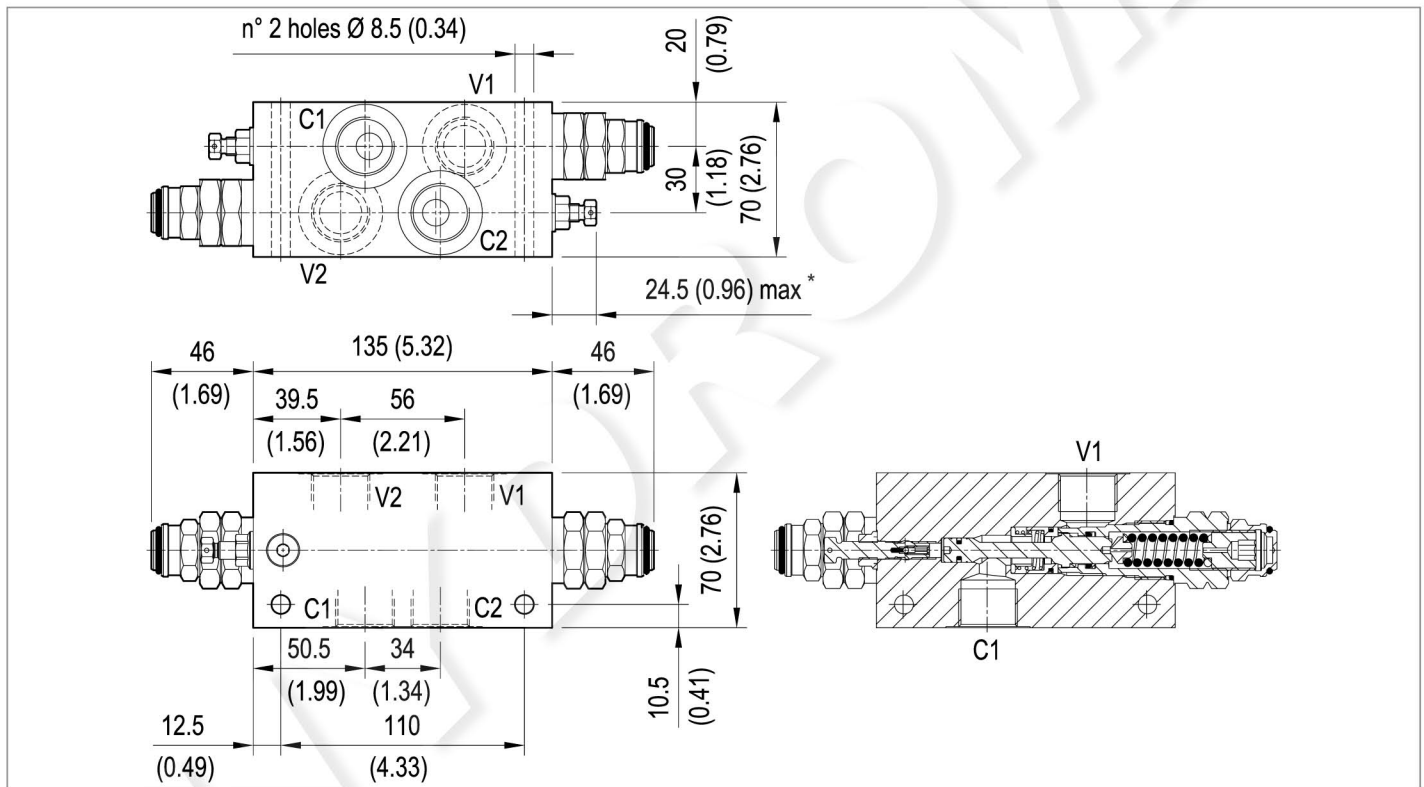
Tamper resistant cap code ordering code 11.04.30.001
 Mat. no. R930005194 

Preferred types

Type	Material number
08449403043500B	R930008382

Type	Material number

Dimensions



* The adjusting screw can be completely unscrewed. Do not exceed the indicated protrusion range of the adjusted screw.