

Part number:

093-10267

HYDROMA

HYDRAULICKÉ SYSTÉMY

**HIDROMA
SYSTEMS**

UKŁADY HYDRAULICZNE

HYDROMA

ГИДРАВЛИЧЕСКИЕ СИСТЕМЫ

CRQ

PILOT OPERATED PRESSURE CONTROL VALVE SERIES 10

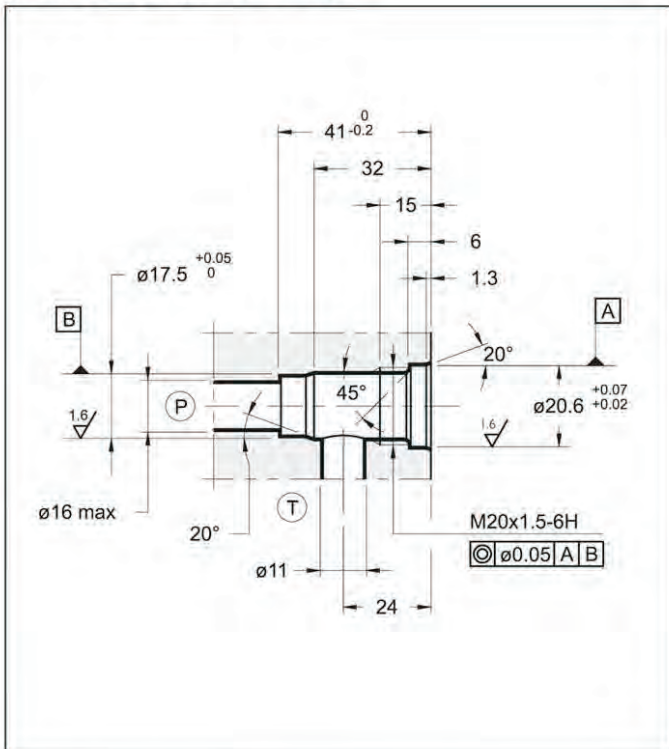


CARTRIDGE TYPE

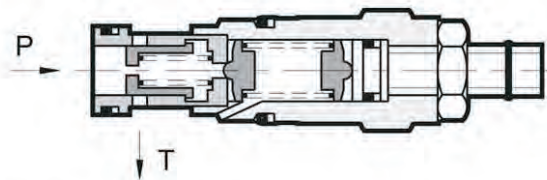
p max **350** bar

Q max **100** l/min

SEAT DIMENSIONS: D-10C



OPERATING PRINCIPLE

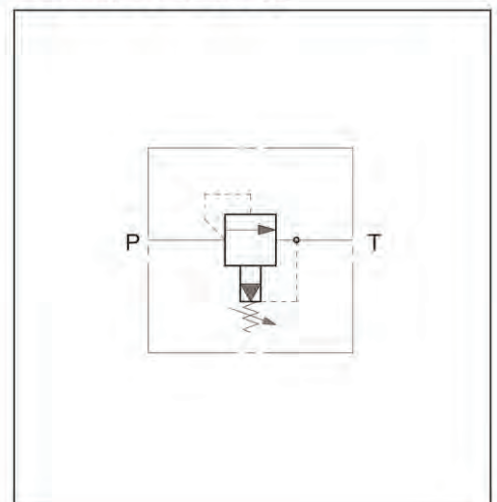


- The CRQ valve is a pilot operated pressure control valve cartridge type that can be used in blocks or panels with D-10C type seat.
- It is normally used to control the hydraulic circuit pressure and allows use of the entire flow of the pump even at pressure values near the set value.
- It is available in four different pressure control ranges up to 350 bar.
- It consists of a main balanced type spool and a pilot stage. The main spool, normally closed, opens when the circuit pressure exceeds the set value generated by the pilot stage, discharging the excess flow in port T, directly connected to the reservoir.
- The pressure is adjustable with a screw, usually supplied as the countersunk hex type, equipped with locking nut and with maximum adjustment limiter.

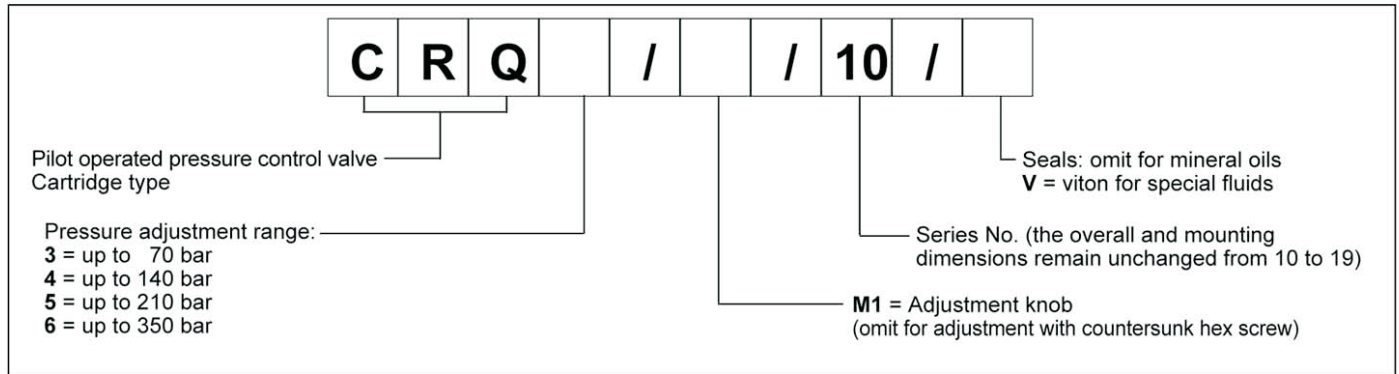
PERFORMANCE RATINGS (measured with mineral oil of viscosity 36 cSt at 50°C)

Maximum operating pressure	bar	350
Minimum controlled pressure	see diagram	
Maximum flow rate	l/min	100
Ambient temperature range	°C	-20 ÷ +50
Fluid temperature range	°C	-20 ÷ +70
Fluid viscosity range	cSt	2,8 ÷ 380
Recommended filtration	µm absolute	≤ 25
Recommended viscosity	cSt	25
Mass	kg	0.16

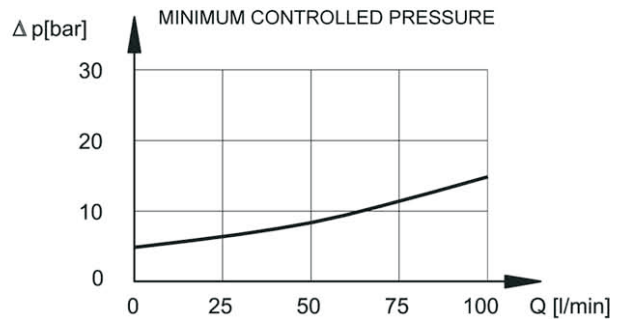
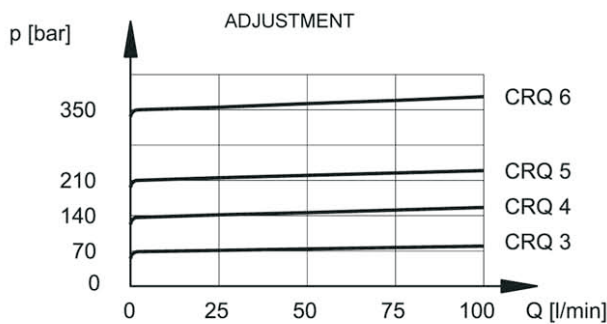
HYDRAULIC SYMBOL



1 - IDENTIFICATION CODE



2 - CHARACTERISTIC CURVES (values obtained with viscosity of 36 cSt at 50°C)



3 - HYDRAULIC FLUIDS

Use mineral oil-based hydraulic fluids, with the addition of suitable anti-frothing and anti-oxidizing agents.
For the use of other types (water glycol, phosphate esters and others), please consult our technical department.

4 - OVERALL AND MOUNTING DIMENSIONS

