

Part number:

HYDROMA

HYDRAULICKÉ SYSTÉMY

**HIDROMA
SISTEMS**

UKŁADY HYDRAULICZNE

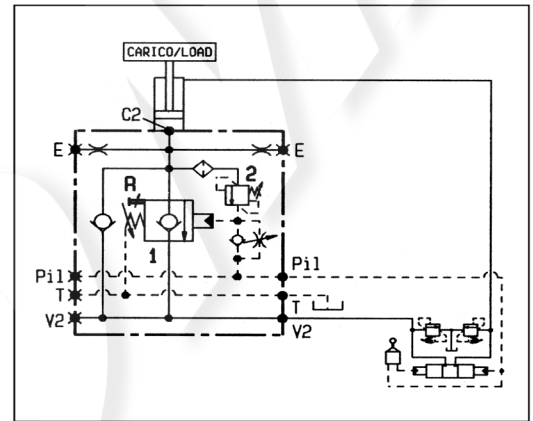
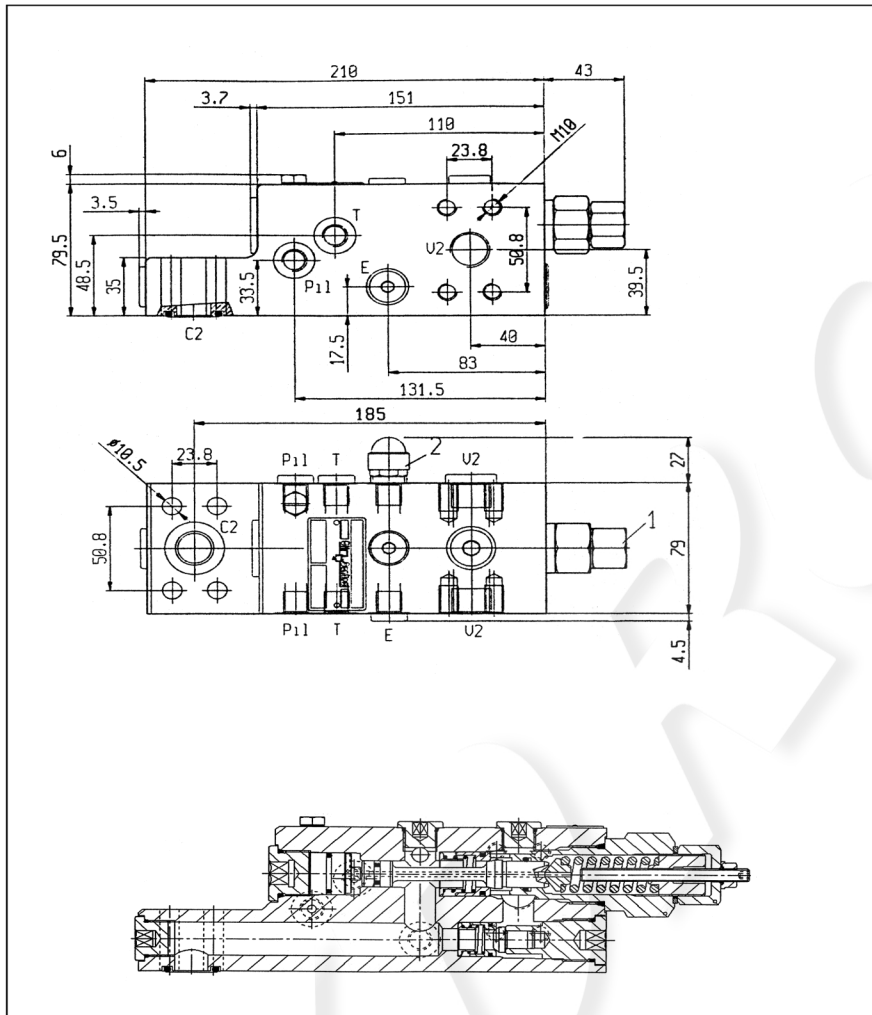
HYDROMA

ГИДРАВЛИЧЕСКИЕ СИСТЕМЫ

BLOCCO E CONTROLLO DISCESA, SERIE "42"
SERIES "42", LOAD HOLDING AND LOWERING PILOT OPERATED

A-VBC42-R-FC

08.47.93.03 - Y - Z



DATI TECNICI / TECHNICAL DATA

Pressione max. 400 bar
 Max. pressure

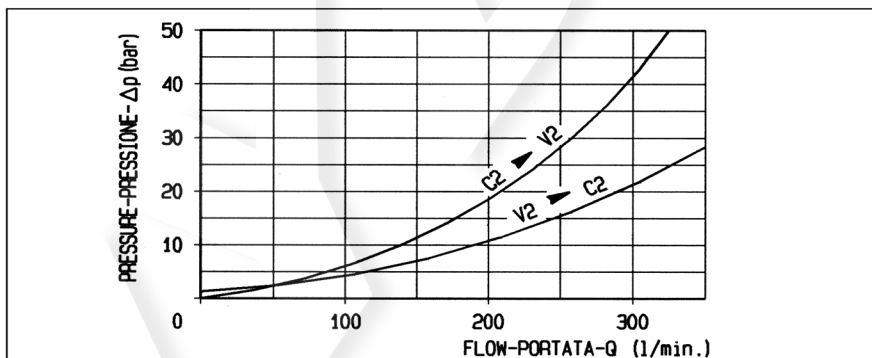
Portata max. 350 l/min
 Flow max.

Peso 12 kg
 Weight

Valvole espressamente progettate per pilotaggio con manipolatori e per applicazioni come "protezione contro rottura tubo" su cilindri di bracci ESCAVATORI (Norma ISO 8643).
 This valve is especially designed for remote control opening and for use as "hose burst protection" on boom and dipper cylinders of EXCAVATORS (ISO Standard 8643).

La massima portata d'olio in discesa può essere limitata mediante la vite "R".
 The maximum lowering flow is adjustable through "R" screw.

Collettore in acciaio
 Steel body



Z	MOLLE / SPRINGS				
	Campo taratura min - max bar Adj. press. range bar	Incremento press. bar / giro vite Press. increase bar / turn	Taratura standard inizio apertura bar Std. cracking pressure setting bar	Cod. ordinazione Ordering code	Colore Colour
40	1	3-15	3.4	7.5	03.51.01.067
	2	200-400	215	350	03.51.01.124 giallo yellow

Y	ATTACCHI / PORT SIZE	
	V2-C2	E - Pil - T
72	3/4 SAE 6000	G 1/4