

Part number:

**HYDROMA**

HYDRAULICKÉ SYSTÉMY

**HIDROMA  
SYSTEMS**

UKŁADY HYDRAULICZNE

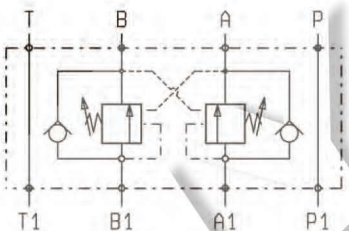
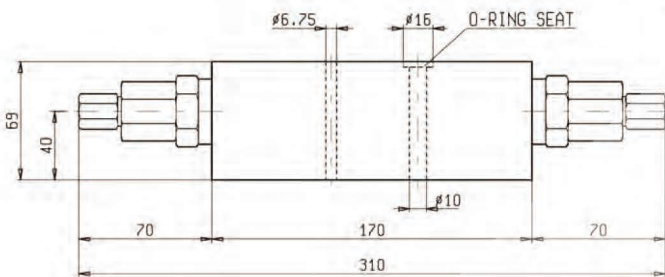
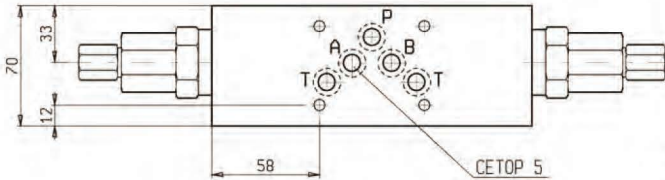
**HYDROMA**

ГИДРАВЛИЧЕСКИЕ СИСТЕМЫ

**SANDWICH VALVES  
DUAL OVERCENTRE MODULES**

**EM-VBSODE-CETOP 5**

**OP.22.02.03.43 - Z**



**DESCRIPTION - OPERATION**

These modules contain two single overcentre valve type VBSODE-150 ( see Oil Control catalog ) and can be sandwich-mounted on CETOP 5 ( size 10 ) flanges.

**FEATURES - RATINGS**

**Maximum Operating Pressure 250 bar**  
**Rated Flow 80 l/min**

- Weight : 3.100 Kg
- Fluids - Temperatures - Testing Conditions - Seals : see page 7.01.04
- Internal Leakage : see page 7.01.04
- Filtration : 25 µm nominal or better, see page 7.01.05
- Manifolds in high-strength aluminum for working pressures up to 250 bar.
- Special steel manifolds can be supplied upon request for working pressures up to 350 bar and for fatigue cycle applications with any working pressure.
- **IMPORTANT** : All products shown in this page are not available from stock and not included in our standard price list. Please contact our Sales Department for any information.

**SPRINGS**

Z	Adj. press.	Press. Increase	Std. Setting bar	Ordering code	Colour
	Range bar	bar / turn	bar (Q=5 l/min)		
20	60-210	66	200	03.51.01.152	green
35	100-350	104	350	03.51.01.142	yellow

**PRESSURE DROP**

