

Part number:

HYDROMA

HYDRAULICKÉ SYSTÉMY

**HIDROMA
SYSTEMS**

UKŁADY HYDRAULICZNE

HYDROMA

ГИДРАВЛИЧЕСКИЕ СИСТЕМЫ

Dual cross over relief, pilot operated with anti-cavitation check valves

A-VAA-CC-150

08.81.11 - X - Y - Z

RE 18308-24

Edition: 02.2022

Replaces: 03.2016



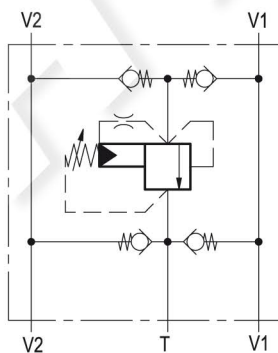
Description

It relieves the inlet pressure from either one of the supply lines and it protects motors or hydraulic actuators from shocks or pressure surges induced by changes in direction or by sudden stops. The relief is of the cross over type, and exhausted oil is transferred through the check valve to the low pressure line (from V1 into V2, or vice-versa) to prevent cavitation. An extra tank port (T), with 2 additional checks, allows to make up for any drain or exhausted flow and ensures that the motor is always full.

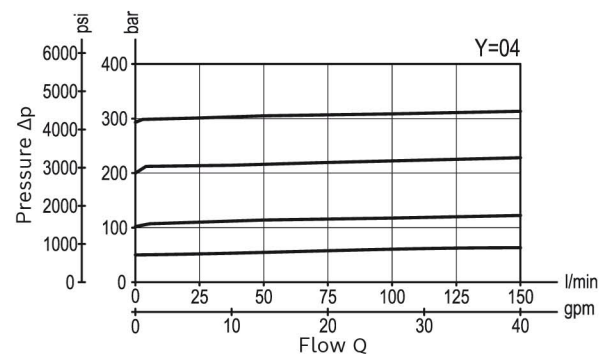
Technical data

Max. operating pressure	350 bar (5000 psi)
Max. flow	150 l/min. (40 gpm)
Leakage at max. relief setting	0.10 l/min. (0.03 gpm)
Weight	see "Dimensions"
Manifold material	Zinc plated steel
The pilot operated relief cartridge provides very "flat" curves up to the max flow.	
For best protection, the valve should be fitted as close to the actuator as possible.	
Fluid	Mineral oil (HL, HLP) according DIN 51524
Fluid temperature range	-30 °C to 100 (-22 to 212 °F)
Viscosity range	10 to 500 mm ² /s (cSt)
Recommended degree of fluid contamination	Class 19/17/14 according to ISO 4406
Other technical data	see data sheet 18350-50

Note: for applications outside these parameters, please consult us.



Characteristic curve



Ordering code

08.81.11	X	Y	Z
-----------------	----------	----------	----------

Dual cross over relief, pilot operated with anti-cavitation check valves

Adjustments

03 Leakproof hex. socket screw



SPRINGS		
Adj. pressure range bar (psi)	Pres. increase bar/turn (psi/turn)	Std. setting Q=5 (l/min) bar (psi)
40 35-420 (500-6000)	115 (1668)	350 (5000)

Tamper resistant cap ordering code 11.04.23.004
Mat. no . R930001411



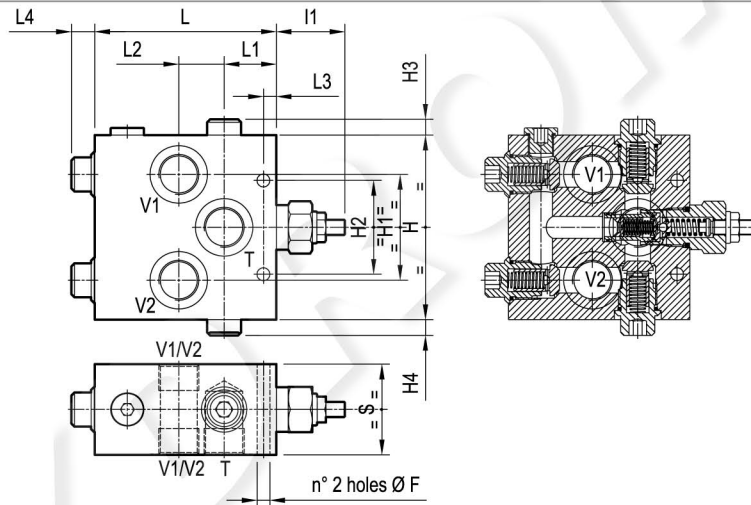
Port sizes	P	T	
03	G 1/2	G 1/2	
04	G 3/4	G 3/4	
05	G 1	G 1	

Preferred types

Type	Material number
088111030340000	R930004103
088111030440000	R930004104

Type	Material number
08811103054000A	R930054488

Dimensions



59.5 (2.34)	15.5 (0.61)	7 (0.28)	40 (1.57)	34 (1.34)	134 (5.28)	45.5 (1.79)	9 (0.35)	9 (0.35)	72 (2.83)	80 (3.15)	146 (5.75)	8.5 (0.33)			G 1	7.7 (17)
60 (2.36)	15.5 (0.61)	8.5 (0.33)	30 (1.18)	34.5 (1.36)	120 (4.72)	45.5 (1.79)	10.5 (0.41)	10.5 (0.41)	62 (2.44)	70 (2.76)	122 (4.8)	8.5 (0.33)			G 3/4	6.1 (13.4)
50 (1.97)	15.5 (0.61)	8 (0.31)	23.5 (0.93)	33 (1.3)	95 (3.74)	45.5 (1.79)	10.5 (0.41)	10.5 (0.41)	50 (1.97)	52 (2.05)	90 (3.54)	8.5 (0.33)			G 1/2	3 (6.6)
S	L4	L3	L2	L1	L	I1	H4	H3	H2	H1	H	F			Y	Weight kg (lbs)