

Part number:

**HYDROMA**

HYDRAULICKÉ SYSTÉMY

**HIDROMA  
SISTEMS**

UKŁADY HYDRAULICZNE

**HYDROMA**

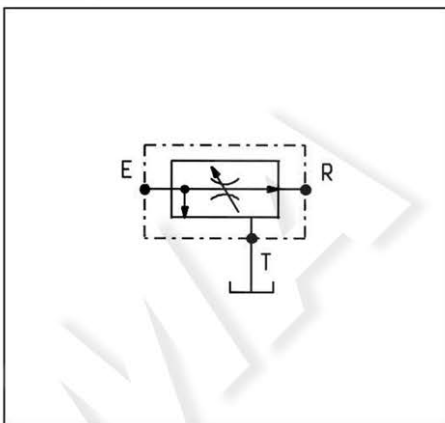
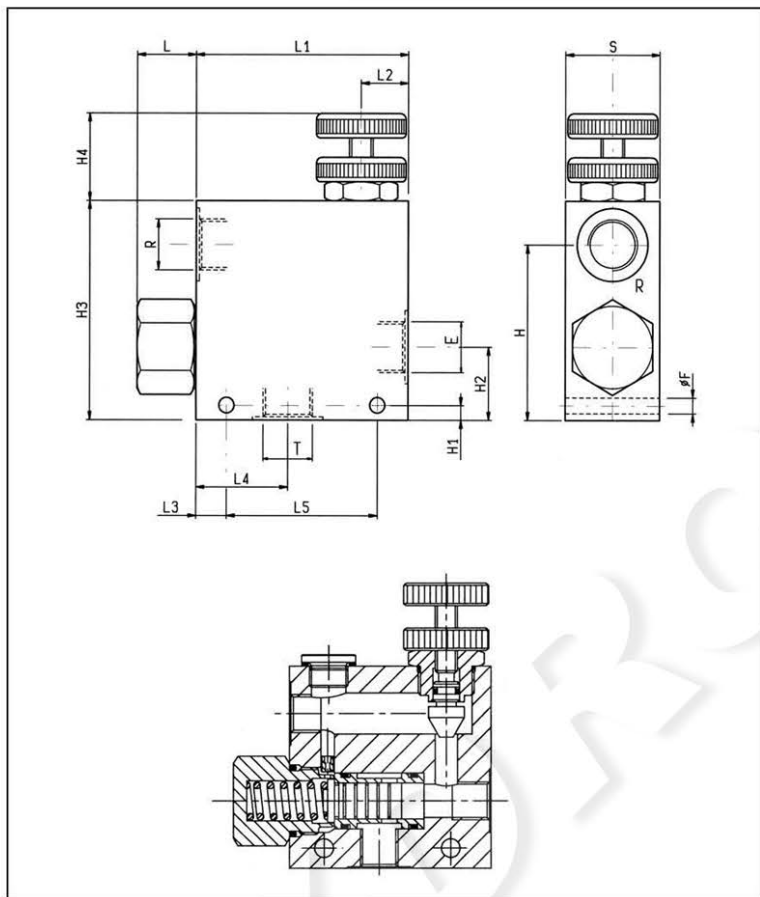
ГИДРАВЛИЧЕСКИЕ СИСТЕМЫ

REGOLATORI DI FLUSSO, 3 VIE COMPENSATI

THREE-WAY TYPE PRESSURE COMPENSATED FLOW REGULATORS

**VRFC3**

**OM.32.03 - X - Y**



**DATI TECNICI / TECHNICAL DATA**

Pressione di lavoro max. 210 bar  
Max. working pressure

QE = Portata max. in entrata "E" - l/min  
QE = Max. admitted inlet flow "E" port - l/min

QR = Portata max. in uscita regolata "R" - l/min  
QR = Max. delivery in regulated flow "R" port - l/min

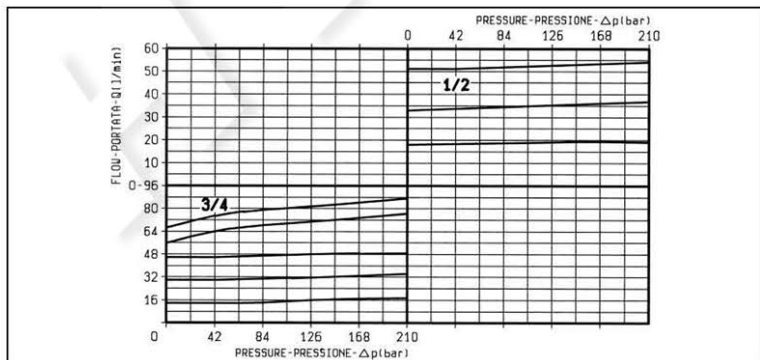
Classe di pulizia dell'olio: almeno 18/14 ISO 4406 (9 NAS-1638)  
Fluid cleanliness class: 18/14 ISO 4406 (9 NAS-1638) or better.

Campo di regolazione portata: 0+3 giri.  
Flow range adjustment: 0+3 turns.

NOTA: sono disponibili versioni con collettore in acciaio, ordinabili sostituendo con "C" la terza cifra del CODICE D'ORDINAZIONE. Le dimensioni esterne e la posizione degli attacchi potrebbero essere leggermente diverse da quelle in figura. Nel dubbio contattare OIL CONTROL.

NOTE: Steel bodies version is also available; it can be ordered by replacing with "C" the 3rd digit of the ordering code. External dimensions and port positions could be slightly different from the ones here shown. In case of doubt, please ask.

|          |           |           |           |           |           |          |           |           |           |           |          |          |           |           |          |                      |
|----------|-----------|-----------|-----------|-----------|-----------|----------|-----------|-----------|-----------|-----------|----------|----------|-----------|-----------|----------|----------------------|
| 50       | 88        | 44        | 10        | 30        | 110       | 22       | 40        | 110       | 35        | 7         | 87       | 8.5      | 90        | 150       | 3/4      | 1.95                 |
| 40       | 64        | 39        | 13        | 20        | 90        | 25       | 40        | 90        | 30        | 6         | 72       | 6.5      | 55        | 90        | 1/2      | 1.06                 |
| <b>S</b> | <b>L5</b> | <b>L4</b> | <b>L3</b> | <b>L2</b> | <b>L1</b> | <b>L</b> | <b>H4</b> | <b>H3</b> | <b>H2</b> | <b>H1</b> | <b>H</b> | <b>F</b> | <b>QR</b> | <b>QE</b> | <b>Y</b> | Peso kg<br>Weight kg |



|           |   |
|-----------|---|
| <b>X</b>  | <b>REGOLAZIONI<br/>ADJUSTMENTS</b>                  |
| <b>70</b> | volantino e controvolantino<br>handknob and locknut |
| <b>80</b> | vite<br>screw and locknut                           |
| <b>40</b> | manopola graduata<br>graduated handknob             |

|           |                             |
|-----------|-----------------------------|
| <b>Y</b>  | <b>ATTACCHI / PORT SIZE</b> |
|           | E-R-T                       |
| <b>03</b> | G 1/2                       |
| <b>04</b> | G 3/4                       |
|           |                             |
|           |                             |
|           |                             |