

Part number:

**006-10185**

**HYDROMA**

HYDRAULICKÉ SYSTÉMY

**HIDROMA  
SISTEMS**

UKŁADY HYDRAULICZNE

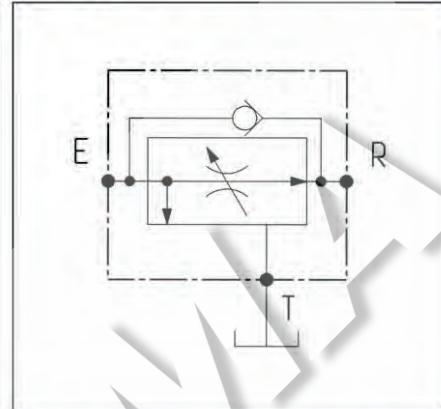
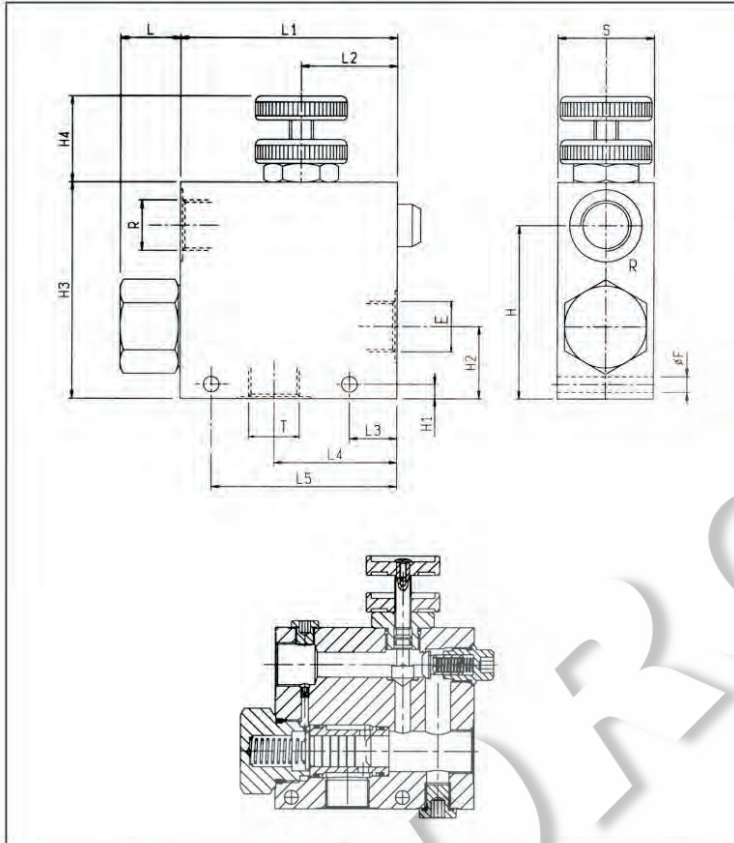
**HYDROMA**

ГИДРАВЛИЧЕСКИЕ СИСТЕМЫ

**REGOLATORI DI FLUSSO, 3 VIE COMPENSATI CON VALVOLA UNIDIREZIONALE / THREE-WAY TYPE PRESSURE COMPENSATED FLOW REGULATORS WITH FREE REVERSE FLOW**

**VRFC3-VU**

**OM.39.03 - X - Y**



**DATI TECNICI / TECHNICAL DATA**

Pressione di lavoro max. 210 bar  
Max. working pressure

Portata max. vedi diagramma  
Flow see performance graph

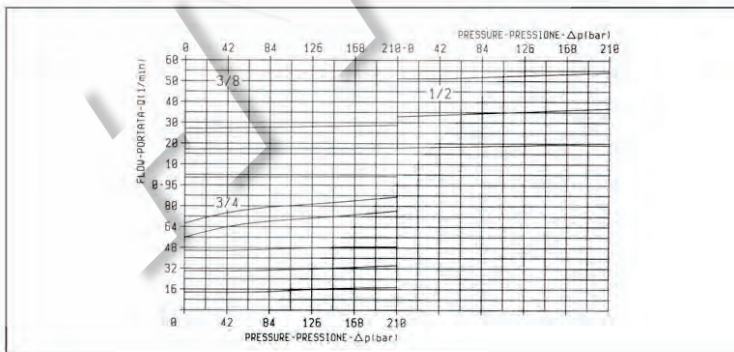
QE = Portata max. in entrata "E" - l/min  
QE = Max. admitted inlet flow "E" port - l/min

QR = Portata max. in uscita regolata "R" - l/min  
QR = Max. delivery in regulated flow "R" port - l/min

Classe di pulizia dell'olio: almeno 18/14 ISO 4406 (9 NAS-1638).  
Fluid cleanliness class: 18/14 ISO 4406 (9 NAS-1638) or better.

Campo di regolazione portata: 0+3 giri.  
Flow range adjustment: 0+3 turns.

50	120	86	50	50	130	22	40	110	35	7	87	8.5	90	150	3/4	2.15
40	97	71	40	40	110	25	40	90	30	6	72	6.5	55	90	1/2	1.15
40	97	71	40	40	110	25	40	90	30	6	72	6.5	30	55	3/8	1.15
<b>S</b>	<b>L5</b>	<b>L4</b>	<b>L3</b>	<b>L2</b>	<b>L1</b>	<b>L</b>	<b>H4</b>	<b>H3</b>	<b>H2</b>	<b>H1</b>	<b>H</b>	<b>F</b>	<b>QR</b>	<b>QE</b>	<b>Y</b>	<b>Pressing Weight kg</b>



<b>X</b>	<b>REGOLAZIONI ADJUSTMENTS</b>
<b>70</b>	volantino e controvolantino handknob and locknut
<b>80</b>	vite screw and locknut
<b>40</b>	manopola graduata graduated handknob

<b>Y</b>	<b>ATTACCHI / PORT SIZE E - R - T</b>
<b>02</b>	G 3/8
<b>03</b>	G 1/2
<b>04</b>	G 3/4