

Part number:

006-10167

HYDROMA

HYDRAULICKÉ SYSTÉMY

**HIDROMA
SYSTEMS**

UKŁADY HYDRAULICZNE

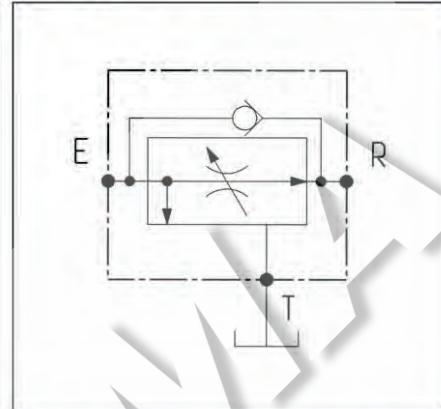
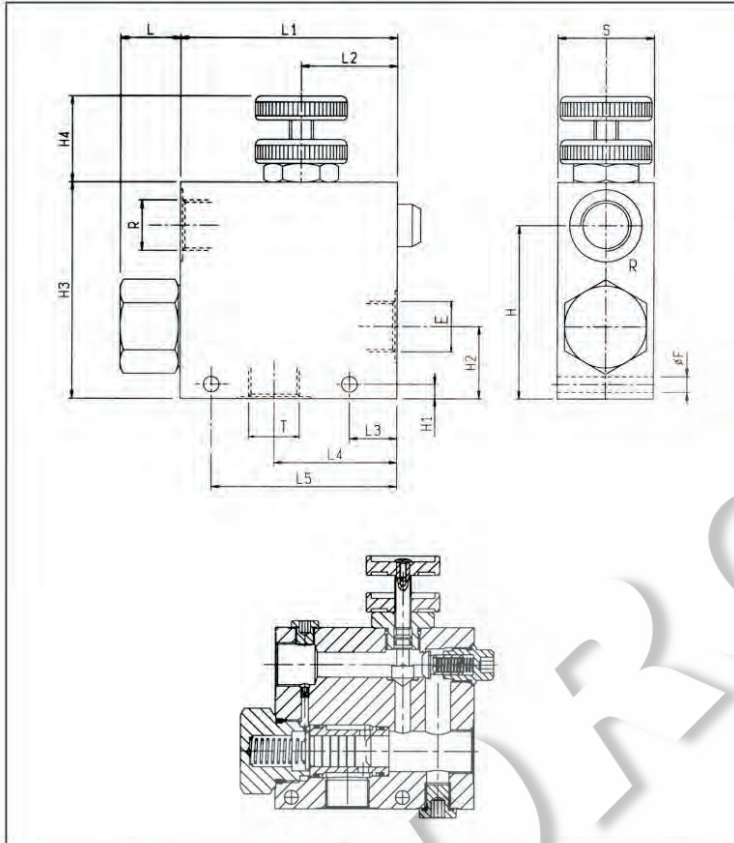
HYDROMA

ГИДРАВЛИЧЕСКИЕ СИСТЕМЫ

REGOLATORI DI FLUSSO, 3 VIE COMPENSATI CON VALVOLA UNIDIREZIONALE / THREE-WAY TYPE PRESSURE COMPENSATED FLOW REGULATORS WITH FREE REVERSE FLOW

VRFC3-VU

OM.39.03 - X - Y



DATI TECNICI / TECHNICAL DATA

Pressione di lavoro max. 210 bar
Max. working pressure

Portata max. vedi diagramma
Flow see performance graph

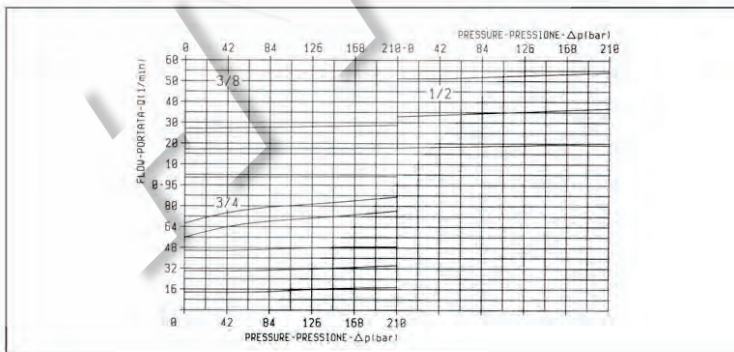
QE = Portata max. in entrata "E" - l/min
QE = Max. admitted inlet flow "E" port - l/min




QR = Portata max. in uscita regolata "R" - l/min
QR = Max. delivery in regulated flow "R" port - l/min

Classe di pulizia dell'olio: almeno 18/14 ISO 4406 (9 NAS-1638).
Fluid cleanliness class: 18/14 ISO 4406 (9 NAS-1638) or better.

Campo di regolazione portata: 0+3 giri.
Flow range adjustment: 0+3 turns.

50	120	86	50	50	130	22	40	110	35	7	87	8.5	90	150	3/4	2.15
40	97	71	40	40	110	25	40	90	30	6	72	6.5	55	90	1/2	1.15
40	97	71	40	40	110	25	40	90	30	6	72	6.5	30	55	3/8	1.15
S	L5	L4	L3	L2	L1	L	H4	H3	H2	H1	H	F	QR	QE	Y	Pressing Weight kg



X	REGOLAZIONI ADJUSTMENTS
70	volantino e controvolantino handknob and locknut 
80	vite screw and locknut 
40	manopola graduata graduated handknob 

Y	ATTACCHI / PORT SIZE E - R - T
02	G 3/8
03	G 1/2
04	G 3/4