

Part number:

HYDROMA

HYDRAULICKÉ SYSTÉMY

**HIDROMA
SYSTEMS**

UKŁADY HYDRAULICZNE

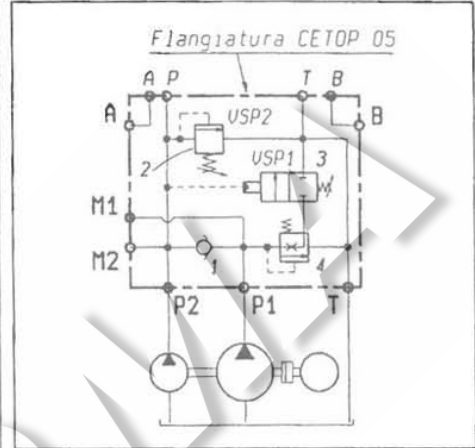
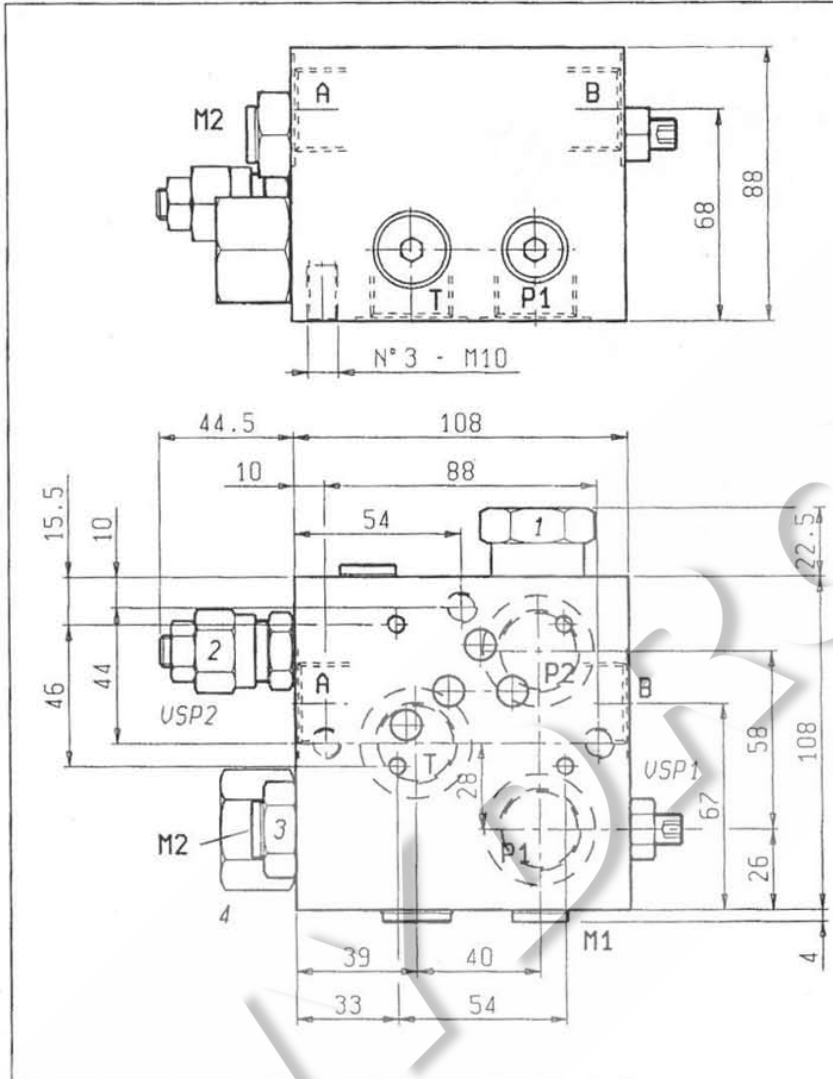
HYDROMA

ГИДРАВЛИЧЕСКИЕ СИСТЕМЫ

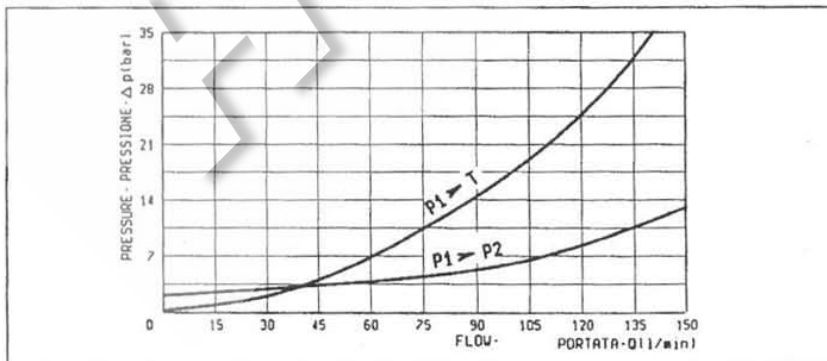
FLANGEABLE PUMP UNLOADING VALVES
VALVOLA DI MESSA A SCARICO PER POMPA
DOPPIA

A-VEP-USP2-F10-34-20

08.90.56.03.04.20.000



Pressione di lavoro max. Max. working pressure	350 bar
Portata max. della valvola 2 Flow max. of valve 2	30 l/min
Peso Weight.	xxxxxx
Collettore in acciaio Steel body	
Portata max 1ª pompa + 2ª pompa Max inlet flow both pumps	80 l/min
Taratura standard valvola di bassa pressione USP1: 50 bar con Q: 5l/min. Campo di taratura 20-100 bar Low pressure adjustment 20-100 bar standard setting 50 bar made at 5l/min.	



REGOLAZIONI ADJUSTMENTS	
vite esterna esagono incassato leakproof hex. socket screw	

MOLLE/SPRINGS				
Campo taratura min-max bar Adj. press. range bar	Incremento pressione bar/giro vite Pressure increase bar/turn	Taratura standard bar (Q: 5 l/min) Std. setting bar (made at 5 l/min)	Codice ordinazione Ordering code	Colore Colour
1	20-100	23.5	03.51.01.076	blu blue
2	50-210	47	03.51.01.075	verde green

ATTACCHI/PORT SIZE	
U2 - C2	E - P1 - T
G 3/4	G 1/4