

Part number:

**HYDROMA**

HYDRAULICKÉ SYSTÉMY

**HIDROMA  
SISTEMS**

UKŁADY HYDRAULICZNE

**HYDROMA**

ГИДРАВЛИЧЕСКИЕ СИСТЕМЫ

## Flow divider, combiner

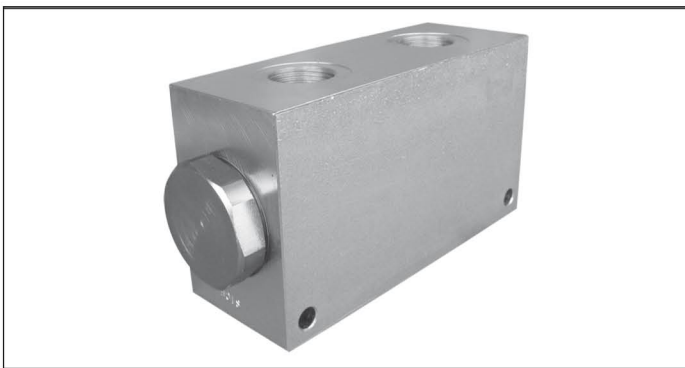
A-DRF

0M.E1.03.90.05 - Z

**RE 18309-62**

Edition: 03.2016

Replaces: 07.2012



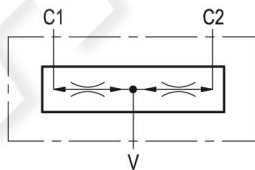
### Technical data

|  |   |
|--|---|
| Max. operating pressure  | 350 bar (5000 psi)                        |
| Flow division ratio: 50% - 50%   |   |
| For any chosen inlet flow capacity (refer to table Z), the slippage, or the difference from theoretical value between the divided flows, depends from the inlet flow, and is lowest in the top portion of the selected range: generally it never exceeds $\pm 3\%$ . |   |
| Weight   | 6.1 kg (13.3 lbs)                         |
| Manifold material  | Zinc plated steel                         |
| Fluid  | Mineral oil (HL, HLP) according DIN 51524 |
| Fluid temperature range  | -30 °C to 100 (-22 to 212 °F)             |
| Viscosity range  | 5 to 800 mm <sup>2</sup> /s (cSt)         |
| Recommended degree of fluid contamination  | Class 19/17/14 according to ISO 4406      |
| Other technical data   | see data sheet 18350-50                   |

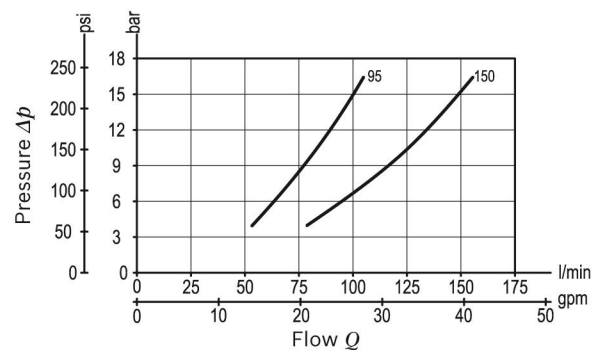
Note: for applications outside these parameters, please consult us.

### Description

This valve gives division of input flow from V to C1-C2, and re-combines flows in reverse direction from C1-C2 to V. The ratio between the flows through C1 and through C2 is maintained constant (typically 50% / 50%) over a wide range of pressure variations and of pressure imbalance in order to synchronize the motion of 2 actuators in both forward and reverse directions. In flow division mode, should either C1 or C2 be blocked, approximately 1÷2% of the available flow can be forced through the port still open.



### Characteristic curve



**Ordering code**

|                    |           |          |
|--------------------|-----------|----------|
| <b>0M.E1.03.90</b> | <b>05</b> | <b>Z</b> |
|--------------------|-----------|----------|

Flow divider, combiner

| INLET CAPACITY |                                      |
|----------------|--------------------------------------|
| <b>95</b>      | 56 to 95 l/min (14.8 to 25.1 gpm)    |
| <b>150</b>     | 90 to 150 l/min (27.78 to 39.63 gpm) |

|            |     |         |  |
|------------|-----|---------|--|
| Port sizes | V   | C1 - C2 |  |
|            | G 1 | G 3/4   |  |

**Preferred types**

| Type            | Material number |
|-----------------|-----------------|
| OME10390059500A | R930001903      |
| OME10390051500A | R930005819      |

| Type | Material number |
|------|-----------------|
|      |                 |
|      |                 |
|      |                 |

**Dimensions**

