

Part number:

006-10301

HYDROMA

HYDRAULICKÉ SYSTÉMY

**HIDROMA
SYSTEMS**

UKŁADY HYDRAULICZNE

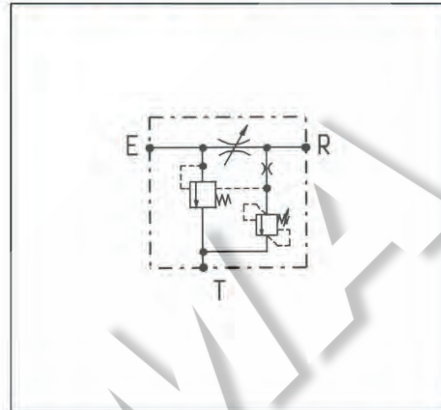
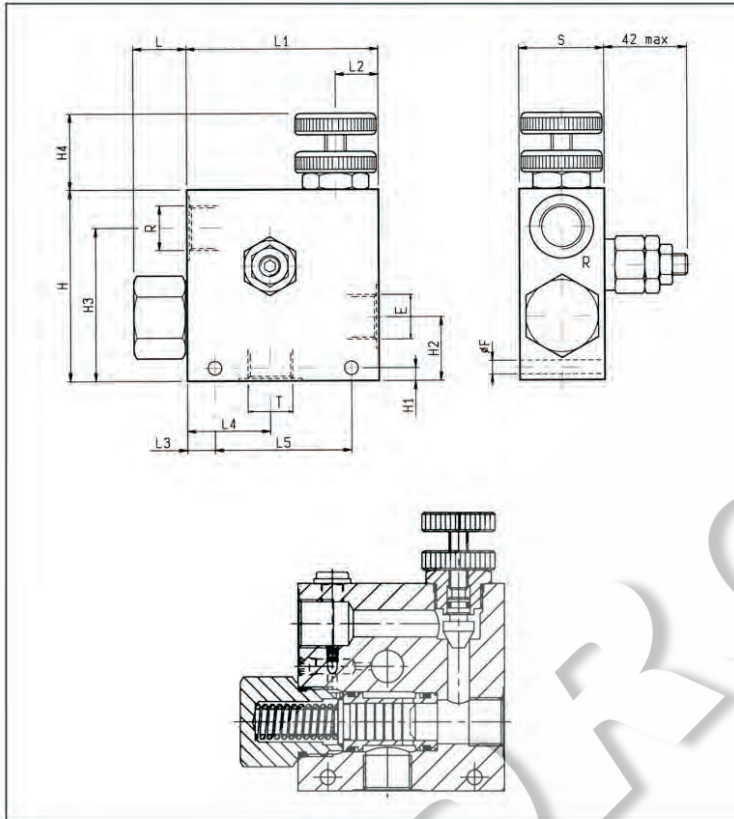
HYDROMA

ГИДРАВЛИЧЕСКИЕ СИСТЕМЫ

**REGOLATORI DI FLUSSO, 3 VIE COMPENSATI, CON VALVOLA DI MASSIMA
THREE-WAY TYPE PRESSURE COMPENSATED FLOW REGULATORS WITH
RELIEF**

VRFC3-VS10

OM.33.03 - X - Y

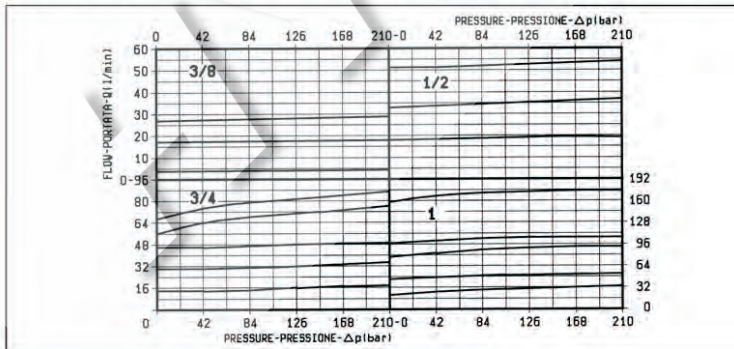


DATI TECNICI / TECHNICAL DATA

Pressione di lavoro max. / Max. working pressure: 210 bar
 Valvola di massima pressione regolabile da 10 a 210 bar. / Taratura standard 210 bar. / Adjustable relief valve: range 10-210 bar. Standard setting 210 bar.
 QE = Portata max. in entrata "E" - l/min / QE = Max. admitted inlet flow "E" port - l/min
 QR = Portata max. in uscita regolata "R" - l/min / QR = Max. delivery in regulated flow "R" port - l/min
 Classe di pulizia dell'olio: almeno 18/14 ISO 4406 (9 NAS-1638). / Fluid cleanliness class: 18/14 ISO 4406 (9 NAS-1638) or better.
 Campo di regolazione portata: 0+3 giri. / Flow range adjustment: 0+3 turns.

NOTA: sono disponibili versioni con collettore in acciaio, ordinabili sostituendo con "C" la terza cifra del CODICE D'ORDINAZIONE. Le dimensioni esterne e la posizione degli attacchi potrebbero essere leggermente diverse da quelle in figura. Nel dubbio contattare OIL CONTROL.
 NOTE: Steel bodies version is also available; it can be ordered by replacing with "C" the 3rd digit of the ordering code. External dimensions and port positions could be slightly different from the ones here shown. In case of doubt, please ask.

60	75	46	-	27	110	35	40	127	65	20	155	8.5	190	280	1	3.30
50	88	44	10	30	110	22	40	87	35	7	110	8.5	90	150	3/4	1.99
40	64	39	13	20	90	25	40	72	30	6	90	6.5	55	90	1/2	1.10
40	64	39	13	20	90	25	40	72	30	6	90	6.5	30	55	3/8	1.10
S	L5	L4	L3	L2	L1	L	H4	H3	H2	H1	H	F	QR	QE	Y	Res. kg / Weight kg



X	REGOLAZIONI ADJUSTMENTS
70	volantino e controvolantino handknob and locknut
80	vite screw and locknut
40	manopola graduata graduated handknob

Y	ATTACCHI / PORT SIZE E-R-T
02	G 3/8
03	G 1/2
04	G 3/4
05	G 1