

Part number:



HYDROMA

HYDRAULICKÉ SYSTÉMY

HIDROMA
SYSTEMS

UKŁADY HYDRAULICZNE

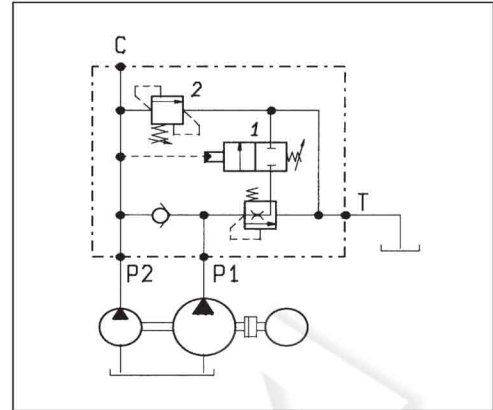
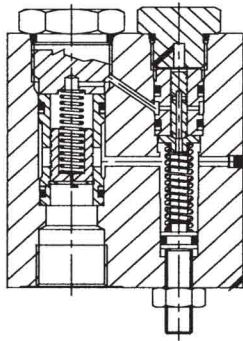
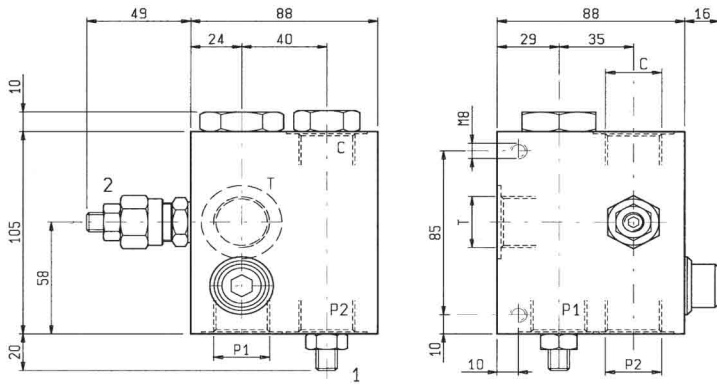
HYDROMA

ГИДРАВЛИЧЕСКИЕ СИСТЕМЫ

PUMP UNLOADING

VEP-VSP2

05.90.06 - X - Y - Z

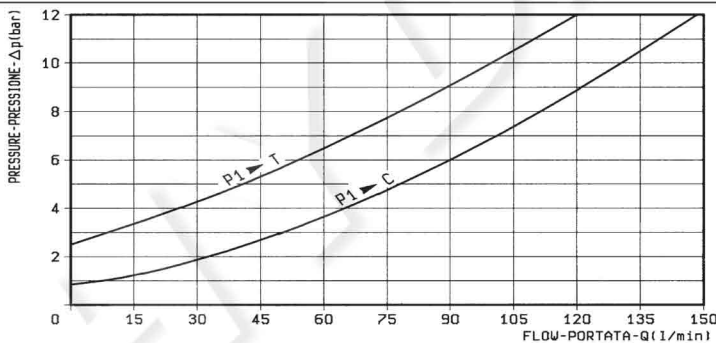


DATI TECNICI / TECHNICAL DATA

Pressione di lavoro max. P1 = 100 bar
Max. working pressure P2 = 350 bar

Portata max. della valvola 2 30 l/min
Flow max. of valve 2 30 l/min

Peso 2.5 kg
Weight 2.5 kg



X

**REGOLAZIONI
ADJUSTMENTS**

03

1
2

vite esterna
esagono incassato
leakproof hex.
socket screw



04

2

volantino
e dado
handknob
and locknut



cappellotto per piombatura
sealing cap
codice / ordering code
03.05.01.003



Z

MOLLE / SPRINGS

Campo taratura min - max bar Adj. press. range bar	Incremento press. bar / giro vite Press. increase bar / turn	Taratura standard bar (Q = 5 l/min)* Std. setting bar (made at = 5 l/min)*	Cod. ordinazione Ordering code	Colore Colour		
20	1	20-100	23.5	50	03.51.01.076	blu blue
	2	50-210	47	200 *	03.51.01.075	verde green
35	1	20-100	23.5	50	03.51.01.076	blu blue
	2	100-350	82	300 *	03.51.01.059	giallo yellow

Y

ATTACCHI / PORT SIZE

P1-P2-C-T

04

G 3/4