

Part number:

006-10186

HYDROMA
HYDRAULICKÉ SYSTÉMY

HIDROMA
SISTEMS
UKŁADY HYDRAULICZNE

HYDROMA
ГИДРАВЛИЧЕСКИЕ СИСТЕМЫ

RE 18309-40/04.10

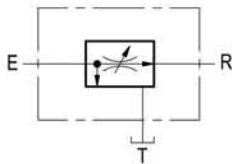
1/2

Replaces: RE 00171/02.07

Flow regulator, 3-way, pressure compensated

VRFC3-L

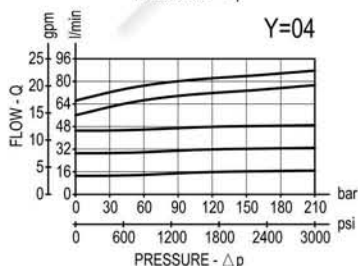
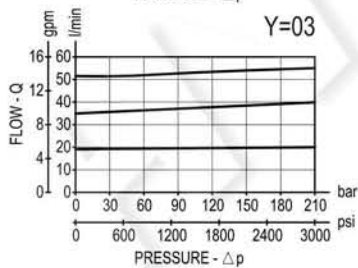
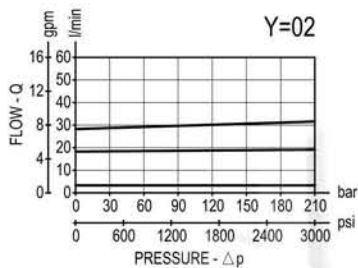
0M.32.03.50 - Y



Description

A constant flow rate, regardless of system pressures, is established from E to R, while a minimum pressure differential of appr. 5 bar (70 psi) exists between the two ports. Input flow supplied to E in excess of the regulated output at R is by-passed to T. Output flow can be varied from closed to the nominal maximum rating for the valve. Reverse flow from R to E is limited by the selected opening of the restrictor and is not pressure compensated. Flow from T to E or from T to R is not possible. Increasing or decreasing inlet flow may cause slight increase or decrease of Regulated flow.

Performance



Technical data

Hydraulic

Operating pressure bar (psi) up to 210 (3000)

QE = max inlet flow "E" port (see "Dimensions")

QR = max regulated flow "R" port (see "Dimensions")

General

Manifold material Aluminium

Note: aluminium bodies are often strong enough for operating pressures exceeding 210 bar (3000 psi), depending from the fatigue life expected in the specific application. If in doubt, consult our Service Network.

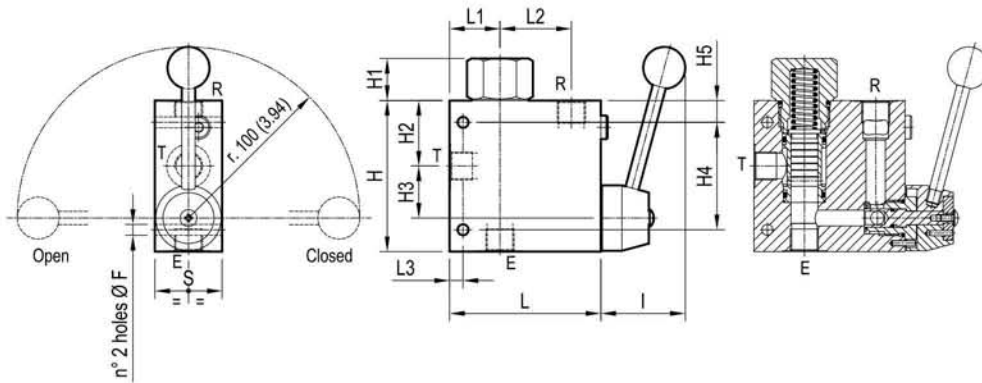
Weight see "Dimensions"

Fluid temperature range °C (°F) between -30 (-22) and +100 (212)

Other technical data see data sheet RE 18350-50

Note: for applications outside these parameters, please consult us.

Dimensions



[mm (inches)]

50 (1.97)	7 (0.28)	50 (1.97)	35 (1.38)	108 (4.25)	50 (1.97)	10 (0.39)	88 (3.47)	35 (1.38)	44 (1.73)	25 (0.98)	108 (4.25)	8.5 (0.34)	90 l/min 24 gpm	150 l/min 40 gpm	G 3/4	2.1 (4.6)
40 (1.58)	8 (0.32)	42.5 (1.67)	30 (1.18)	90 (3.54)	50 (1.97)	13 (0.51)	64 (2.52)	31 (1.22)	39 (1.54)	25 (0.98)	90 (3.54)	6.5 (0.26)	55 l/min 15 gpm	90 l/min 24 gpm	G 1/2	1.13 (2.49)
40 (1.58)	8 (0.32)	42.5 (1.67)	30 (1.18)	90 (3.54)	50 (1.97)	13 (0.51)	64 (2.52)	31 (1.22)	39 (1.54)	25 (0.98)	90 (3.54)	6.5 (0.26)	30 l/min 8 gpm	55 l/min 15 gpm	G 3/8	1.13 (2.49)
S	L3	L2	L1	L	I	H5	H4	H3	H2	H1	H	F	QR	QE	Y	Weight Kg (lbs)

Ordering code

OM.32.03 50 Y

Flow regulator,
3-way, pressure compensated

Adjustments

Lever with built in friction clutch

Port sizes	E - R - T
= 02	G 3/8
= 03	G 1/2
= 04	G 3/4

Type	Material number
OM3203500200000	R930004228
OM320350030000A	R930004229
OM3203500400000	R930004230

Type	Material number