

Part number:

**HYDROMA**

HYDRAULICKÉ SYSTÉMY

**HIDROMA  
SISTEMS**

UKŁADY HYDRAULICZNE

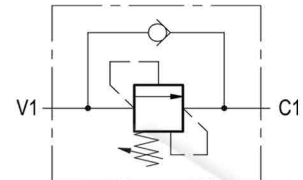
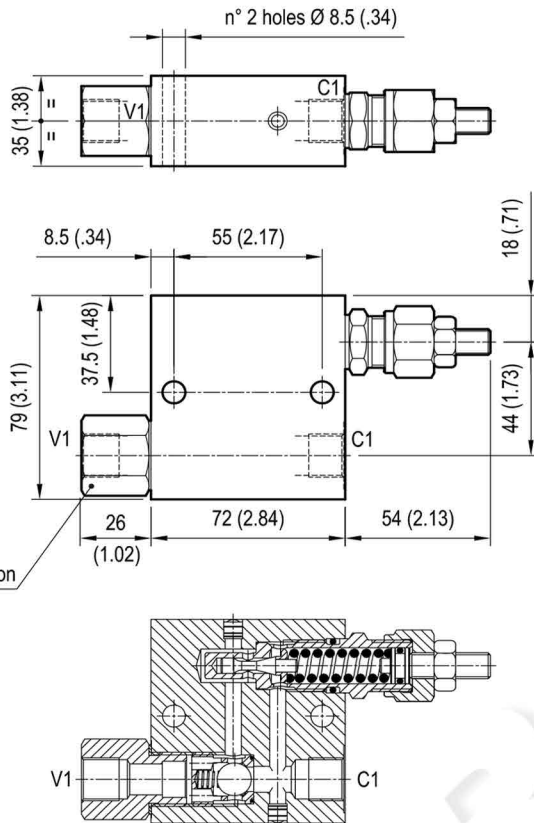
**HYDROMA**

ГИДРАВЛИЧЕСКИЕ СИСТЕМЫ

**SEQUENCE, DIRECT ACTING POPPET TYPE**

**VSQ-30**

**05.21.07 - X - Y - Z**



**TECHNICAL DATA**

Operating pressure: up to 210 bar (3000 psi)

Max flow: 30 l/min (8 gpm)

Aluminium body

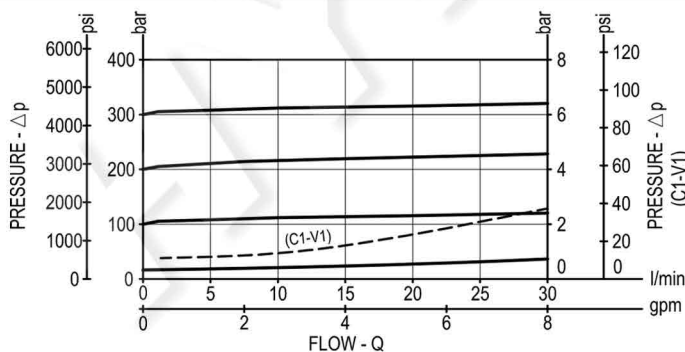
NOTE: aluminium bodies are often strong enough for operating pressures exceeding 210 bar (3000 psi), depending from the fatigue life expected in the specific application. If in doubt, consult our Service Network.

Weight: 0.81 kg (1.8 lbs)

Pressure drop curves are shown with zero back pressure on "C1" port.

This valve is successfully employed when the pressure needed to move the secondary actuator is not very high.

Initially, the flow goes to a side line connected to V1, not shown here, and energizes a first actuator until pressure increases to meet the selected valve setting; then flow opens the relief cartridge and passes from V1 to C1 energizing the second actuator connected to C1. Note that pressure at C1, i.e. the pressure needed to operate the second actuator, is additive to the relief setting of the valve. The hydraulic damping of the relief poppet provides enhanced stability at all flows. The check valve allows reverse flow, from C1 to V1.



**X**

**ADJUSTMENTS**

**03**

Leakproof hex. socket screw



Tamper resistant cap code 11.04.23.003



**SPRINGS**

Z	SPRINGS			
	Adj. press. range bar (psi)	Pres. increase bar/turn (psi/turn)	Std. setting bar (psi) Q=5 l/min	
<b>05</b>	5-50 (75-725)	12 (174)	50 (725)	
<b>10</b>	30-100 (435-1450)	24 (348)	100 (1450)	
<b>20</b>	50-210 (725-3000)	47 (682)	200 (2900)	
<b>35</b>	100-350 (1450-5000)	82 (1189)	350 (5000)	

**Y**

**PORT SIZE**

**02**

V1-C1

**03**

G 3/8

**03**

G 1/2