

Part number:

HYDROMA

HYDRAULICKÉ SYSTÉMY

**HIDROMA
SYSTEMS**

UKŁADY HYDRAULICZNE

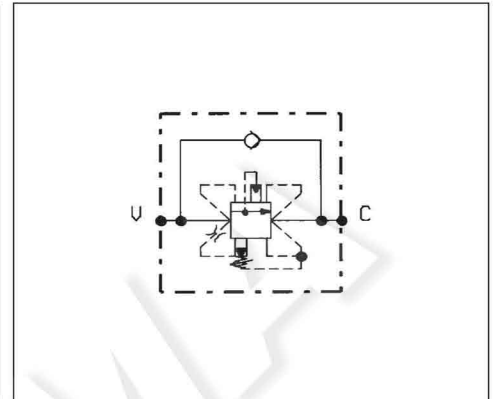
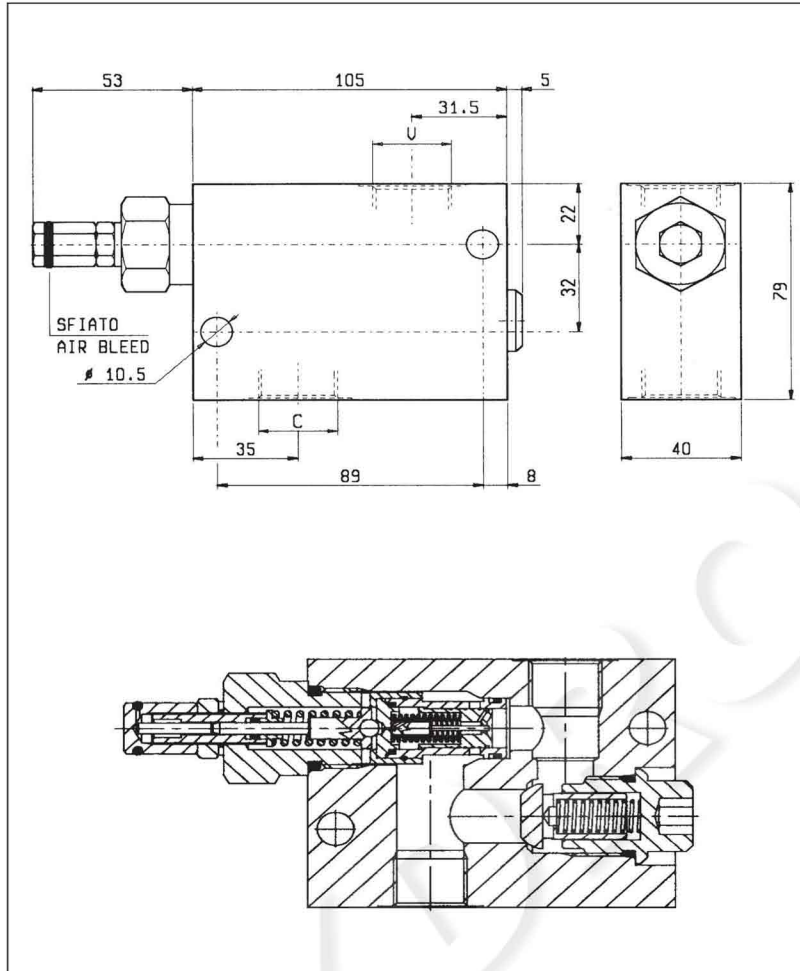
HYDROMA

ГИДРАВЛИЧЕСКИЕ СИСТЕМЫ

SEQUENZA E MESSA A SCARICO, COMPENSATE, PILOTATE,
OTTURATORE CILINDRICO
P.O., SPOOL TYPE, SELF COMPENSATED UNLOADING AND SEQUENCE

VSQP-PD-CC-150

05.24.03- X - Y - Z



DATI TECNICI / TECHNICAL DATA

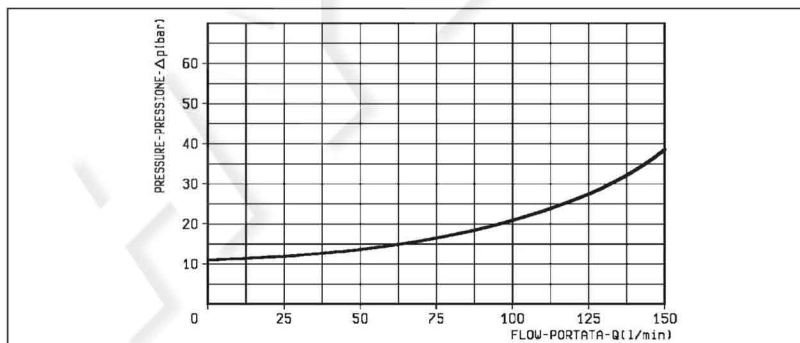
Pressione di lavoro max. 210 bar
Max. working pressure

Portata max. 150 l/min
Flow max.

Peso 1.10 kg
Weight

Trafilamento: circa 0.10 l/min alla massima pressione.
Leakage: 0.10 l/min approx at max relief setting.

Classe di pulizia dell'olio: almeno 18/14 ISO 4406 (9 NAS-1638).
Fluid cleanliness class: 18/14 ISO 4406 (9 NAS-1638) or better.



X	REGOLAZIONI ADJUSTMENTS	
03	vite interna esagono incassato leakproof inner hex. socket screw	
	cappellotto per piombatura sealing cap codice / ordering code 03.05.01.004	

Z	MOLLE / SPRINGS				
	Campo taratura min - max bar Adj. press. range bar	Incremento press. bar / giro vite Press. increase bar / turn	Taratura standard bar (Q = 5 l/min) Std. setting bar (made at 5 l/min)	Cod. ordinazione Ordering code	Colore Colour
20	10-210	35	200		verde green

Y	ATTACCHI / PORT SIZE V-C	
	03	G 1/2
04	G 3/4	