

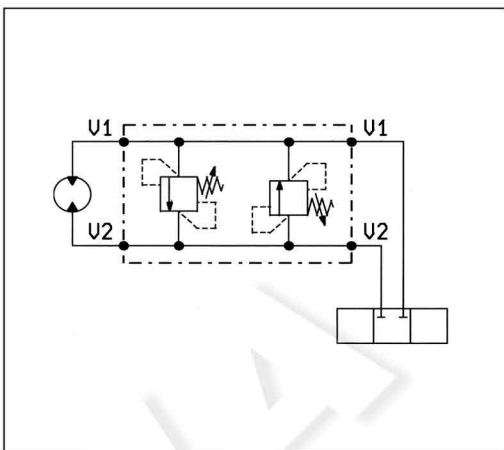
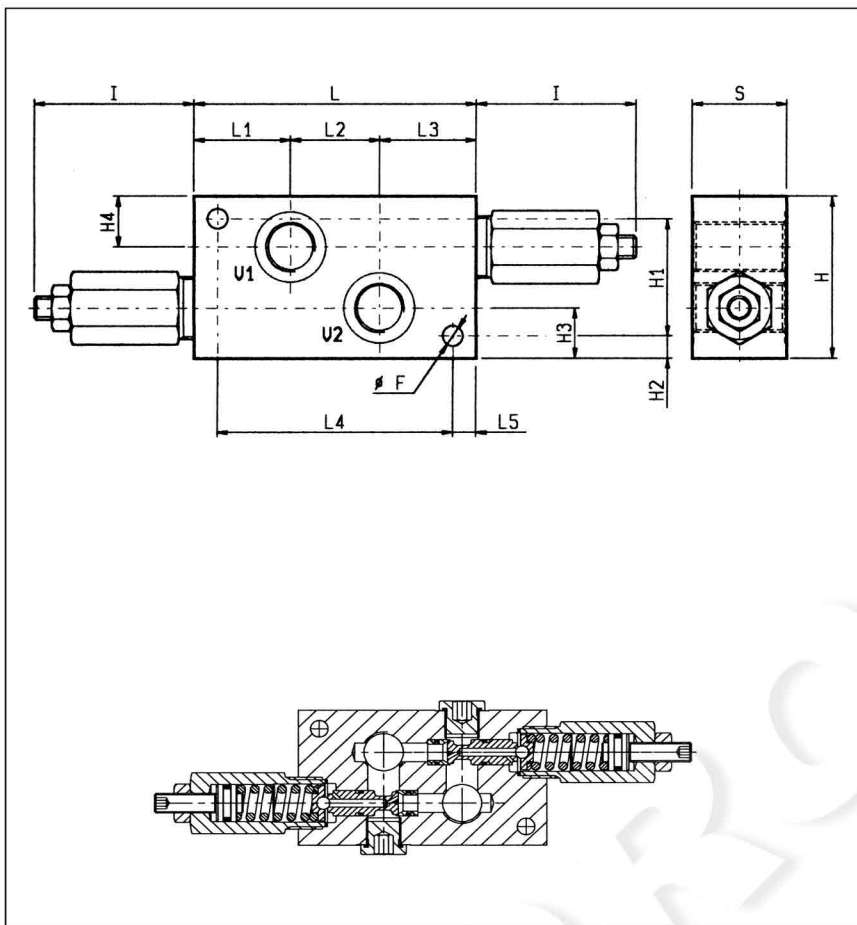
Part number:

006-10005

**MASSIMA PRESSIONE, DIFFERENZIALI, DOPPIE INCROCIATE
DUAL CROSS OVER, DIFFERENTIAL RELIEF**

VSD-DI

05.15.01 - X - Y - Z

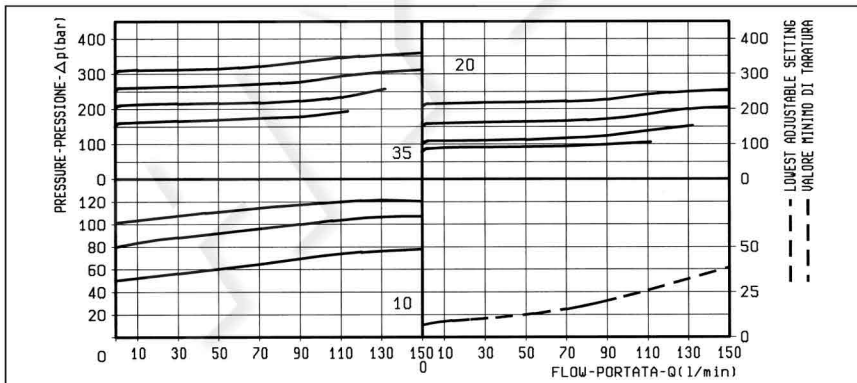


DATI TECNICI / TECHNICAL DATA

Pressione di lavoro max. 350 bar
Max. working pressure 350 bar

Portata massima vedi diagramma
Flow see performance graph

50	10	130	54.5	41	54.5	150	80	30.5	30.5	9.5	70	89	10.5			1	2
40	10	100	41	38	41	120	70	21.5	21.5	9.5	50	69	8.5			1/2	1.32
40	10	100	41	38	41	120	70	21.5	21.5	9.5	50	69	8.5			3/8	1.32
S	L5	L4	L3	L2	L1	L	I	H4	H3	H2	H1	H	F			Y	Press kg Weight kg



X REGOLAZIONI ADJUSTMENTS

03 vite esterna esagono incassato leakproof hex. socket screw 

cappello per piombatura sealing cap codice / ordering code 03.05.01.001 

MOLLE / SPRINGS

Z	Campo taratura min - max bar Adj. press. range bar	Incremento press. bar / giro vite Press. increase bar / turn	Taratura standard bar (Q = 5 l/min) Std. setting bar (made at 5 l/min)	Cod. ordinazione Ordering code	Colore Colour
10	40-100	33	100	03.51.01.151	blu blue
20	70-210	68	200	03.51.01.152	verde green
35	130-350	105	350	03.51.01.142	giallo yellow

ATTACCHI / PORT SIZE

Y	V1-V2
03	G 1/2
04	G 3/4
05	G 1