

Part number:

006-10006

HYDROMA

HYDRAULICKÉ SYSTÉMY

**HIDROMA
SYSTEMS**

UKŁADY HYDRAULICZNE

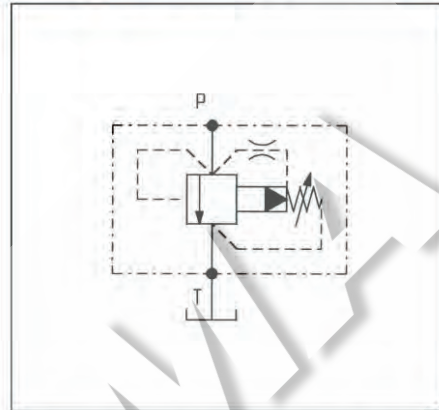
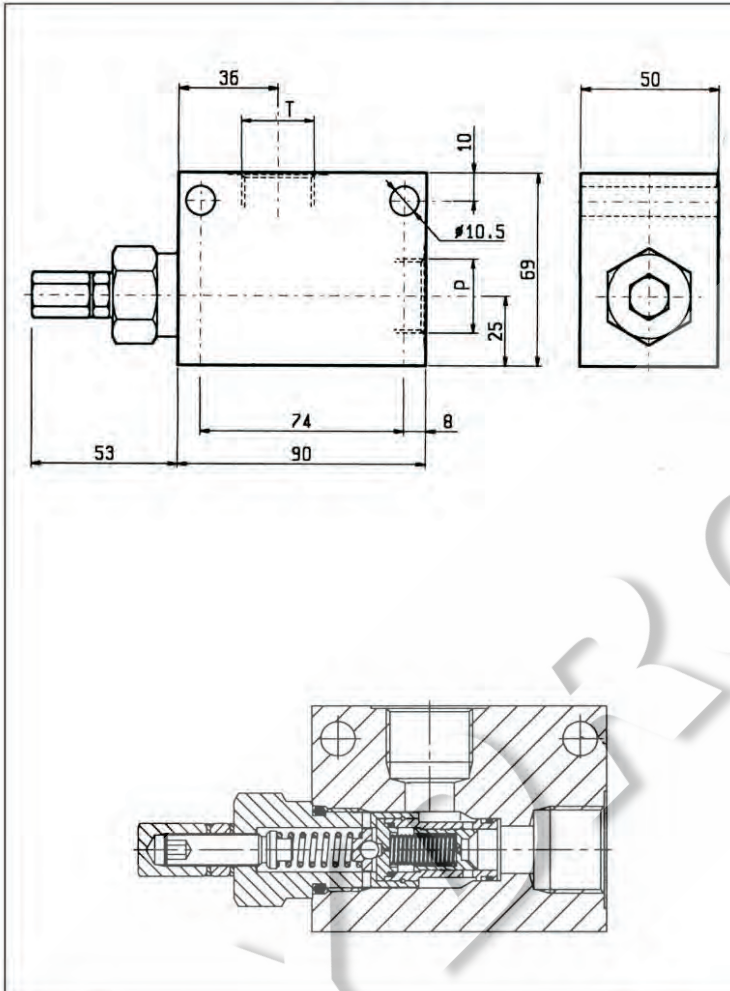
HYDROMA

ГИДРАВЛИЧЕСКИЕ СИСТЕМЫ

**MASSIMA PRESSIONE, PILOTATE, OTTURATORE CILINDRICO
PILOT OPERATED, SPOOL TYPE RELIEF**

VSPC-150

05.11.05 - X - Y - Z



DATI TECNICI / TECHNICAL DATA

* Pressione di lavoro max. 350 bar
* Max. working pressure 350 bar

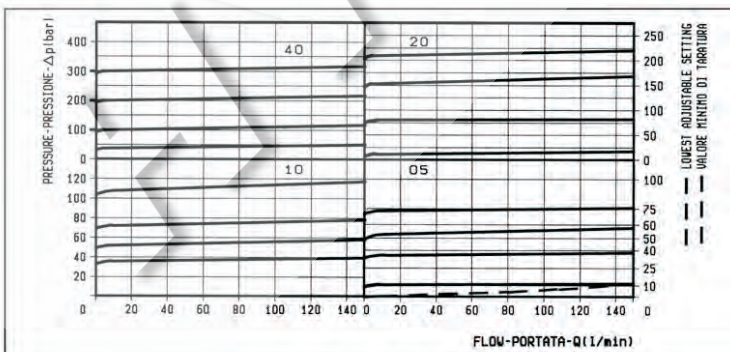
Portata max. 150 l/min
Flow max. 150 l/min

Peso 0.9 kg
Weight 0.9 kg

Trafilamento: circa 0,10 l/min alla massima pressione.
Leakage: 0.10 l/min approx at max relief setting.

Classe di pulizia dell'olio: almeno 18/14 ISO 4406 (9 NAS-1638).
Fluid cleanliness class: 18/14 ISO 4406 (9 NAS-1638) or better.

Utilizzabili in applicazioni in cui la pressione allo scarico "T" sia sempre inferiore alla pressione della linea "P".
Suitable for applications where pressure in the return line "T" never exceeds the pressure in the "P" line.



X	REGOLAZIONI ADJUSTMENTS	
03	vite interna esagono incassato leakproof inner hex. socket screw	
04	volantino e predisposizione montaggio a pannello handknob and locknut panel mounting	
	cappello per piombatura sealing cap codice / ordering code 03.05.01.004	

Z	MOLLE / SPRINGS				
	Campo taratura min - max bar Adj. press. range bar	Incremento press. bar / giro vite Press. increase bar / turn	Taratura standard bar (Q = 5 l/min) Std. setting bar (made at 5 l/min)	Cod. ordinazione Ordering code	Colore Colour
05	1.7-70	20.5	50		nero black
10	7-105	26	100		blu blue
20	10-210	35	200		verde green
40	35-420 *	115	350		giallo yellow

Y	ATTACCHI / PORT SIZE	
	P - T	
03	G 1/2	
04	G 3/4	
05	G 1	