

Part number:

**HYDROMA**

HYDRAULICKÉ SYSTÉMY

**HIDROMA  
SISTEMS**

UKŁADY HYDRAULICZNE

**HYDROMA**

ГИДРАВЛИЧЕСКИЕ СИСТЕМЫ

## Dual counterbalance

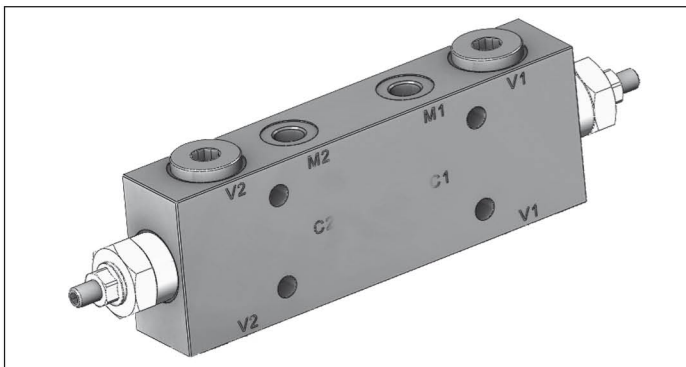
A-VBSO-DE-90-FC2

08.44.89 - X - Y - Z

**RE 18308-63**

Edition: 03.2016

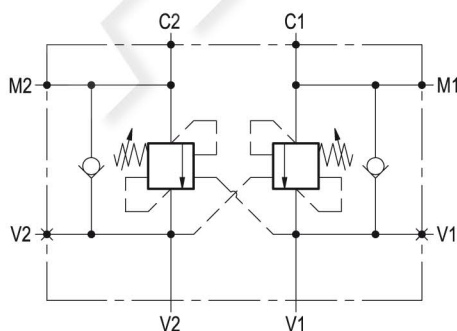
Replaces: 07.2012



### Description

It provides static and dynamic control of load by regulating the flow IN and OUT of the actuator, through ports C1 and C2. This valve module includes 2 sections, each one composed by a check and a relief valve pilot assisted by pressure in the opposite line: the check section allows free flow into the actuator, then holds the load against reverse movement; with pilot pressure applied at the line across, the pressure setting of the relief is reduced in proportion to the stated ratio until opening and allowing controlled reverse flow. Back-pressure at V1 or V2 is additive to the pressure setting in all functions. For better safety and compact assembly, the C1 and C2 ports are gasket mounted directly on the actuator.

Note: port identified with M are not protected with calibrated orifice but in direct connection with pressure channels.



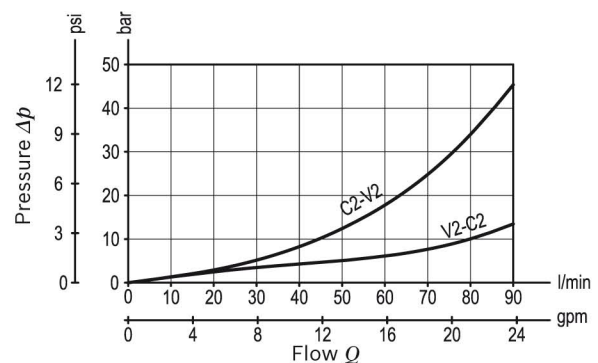
### Technical data

Max. operating pressure	410 bar (5945 psi)
Max. flow	90 l/min. (24 gpm)
Weight	3 kg (6.6 lbs)
Manifold material	Zinc plated steel
Flange seal kit <sup>1)</sup>	E00000000000009 (R930004539)
Fluid	Mineral oil (HL, HLP) according DIN 51524
Fluid temperature range	-30 °C to 100 (-22 to 212 °F)
Viscosity range	5 to 800 mm <sup>2</sup> /s (cSt)
Recommended degree of fluid contamination	Class 19/17/14 according to ISO 4406
Other technical data	see data sheet 18350-50
Relief setting:	at least 1.3 times the highest expected load.

Note: for applications outside these parameters, please consult us.

<sup>1)</sup> Seals for 5 valves.

### Characteristic curve




**Ordering code**

<b>08.44.89</b>	<b>X</b>	<b>Y</b>	<b>Z</b>
-----------------	----------	----------	----------

Dual counterbalance	
Pilot ratio	
<b>03</b>	4.2 : 1

SPRINGS			
	Adj. pressure range bar (psi)	Pres. increase bar/turn (psi/turn)	Std. setting Q=5 (l/min) bar (psi)
<b>35</b>	180-350 (2610-5000)	138 (2001)	350 (5000)

Pressure setting up to 410 bar: code on request.

Tamper resistant cap code ordering code 11.04.23.002  
 Mat. no. R930000752 

Port sizes	V1 - V2	C1 - C2	M1 - M2
<b>03</b>	G 1/2	Ø 9 (0.35)	G 1/4

**Preferred types**

Type	Material number
084489030335000	R930003459

Type	Material number

**Dimensions**

