

Part number:

HYDROMA

HYDRAULICKÉ SYSTÉMY

**HIDROMA
SYSTEMS**

UKŁADY HYDRAULICZNE

HYDROMA

ГИДРАВЛИЧЕСКИЕ СИСТЕМЫ

Dual counterbalance

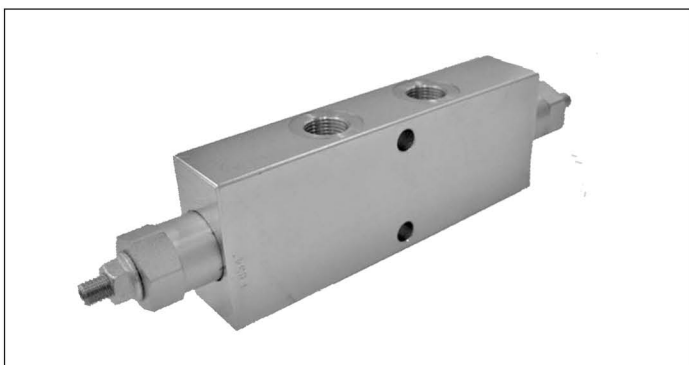
A-VBSO-DE-30-PI

08.48.11 - X - Y - Z

RE 18307-72

Edition: 03.2016

Replaces: 07.2012



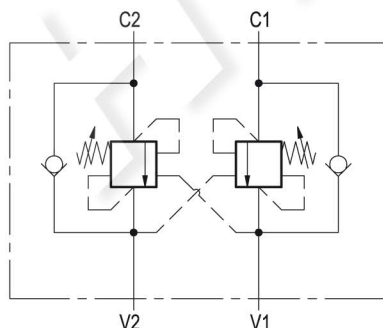
Technical data

| | |
|---|---|
| Max. operating pressure | 410 bar (5945 psi) |
| Max. flow | 60 l/min. (16 gpm) |
| Weight | see "Dimensions" |
| Manifold material | Zinc plated steel |
| Fluid | Mineral oil (HL, HLP) according DIN 51524 |
| Fluid temperature range | -30 °C to 100 (-22 to 212 °F) |
| Viscosity range | 5 to 800 mm ² /s (cSt) |
| Recommended degree of fluid contamination | Class 19/17/14 according to ISO 4406 |
| Other technical data | see data sheet 18350-50 |
| Relief setting: | at least 1.3 times the highest expected load. |

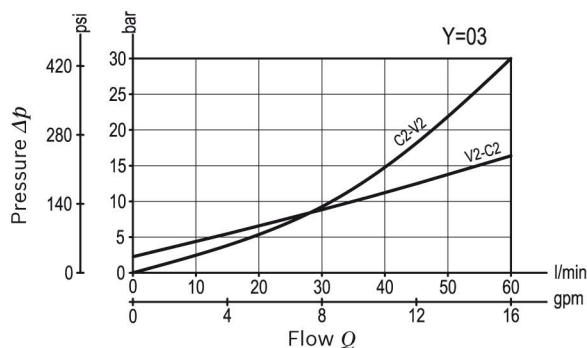
Note: for applications outside these parameters, please consult us.

Description

It provides static and dynamic control of load by regulating the flow IN and OUT of the actuator, through ports C1 and C2. This valve module includes 2 sections, each one composed by a check and a relief valve pilot assisted by pressure in the opposite line: the check section allows free flow into the actuator, then holds the load against reverse movement; with pilot pressure applied at the line across, the pressure setting of the relief is reduced in proportion to the stated ratio until opening and allowing controlled reverse flow. Back-pressure at V1 or V2 is additive to the pressure setting in all functions.



Characteristic curve



Ordering code

| | | | |
|-----------------|----------|----------|----------|
| 08.48.11 | X | Y | Z |
|-----------------|----------|----------|----------|

Dual counterbalance

Pilot ratio

03 4.2 : 1

| | | | |
|------------|---------|---------|--|
| Port sizes | V1 - V2 | C1 - C2 | |
| 02 | G 3/8 | G 3/8 | |
| 03 | G 1/2 | G 1/2 | |

| SPRINGS | | | |
|-----------|-------------------------------|------------------------------------|------------------------------------|
| | Adj. pressure range bar (psi) | Pres. increase bar/turn (psi/turn) | Std. setting Q=5 (l/min) bar (psi) |
| 20 | 60-210 (870-3000) | 63 (914) | 200 (2900) |
| 35 | 180-350 (2610-5000) | 138 (2001) | 350 (5000) |

Pressure setting up to 410 bar: code on request.

Tamper resistant cap code ordering code 11.04.23.002
Mat. no. R930000752



Preferred types

| Type | Material number |
|-----------------|-----------------|
| 084811030220000 | R930006936 |
| 084811030235000 | R930006445 |

| Type | Material number |
|-----------------|-----------------|
| 084811030320000 | R930006817 |
| 084811030335000 | R930006818 |

Dimensions

| | | | | | | | | | | | | | | |
|----|--------------|-------------|-------------|-------------|-------------|------------|-------------|-----------|-----------|------------|--|--|-------|-----------------|
| 35 | 112.6 (1.38) | 19.2 (0.76) | 75.5 (2.97) | 47.6 (1.87) | 51.7 (2.04) | 151 (5.95) | 45.5 (1.79) | 43 (1.69) | 65 (2.56) | 8.5 (0.34) | | | G 1/2 | 2.9 (6.4) |
| 30 | 109.6 (1.18) | 20.7 (0.82) | 75.5 (2.97) | 47.6 (1.87) | 51.7 (2.04) | 151 (5.95) | 45.5 (1.79) | 38 (1.5) | 55 (2.17) | 8.5 (0.34) | | | G 3/8 | 2.5 (5.5) |
| S | L5 | L4 | L3 | L2 | L1 | L | I | H1 | H | F | | | Y | Weight kg (lbs) |