

Part number:

006-10248

HYDROMA

HYDRAULICKÉ SYSTÉMY

**HIDROMA
SYSTEMS**

UKŁADY HYDRAULICZNE

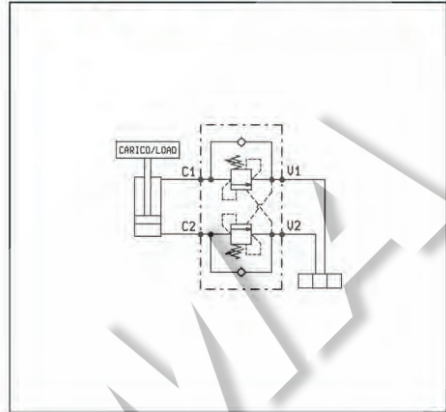
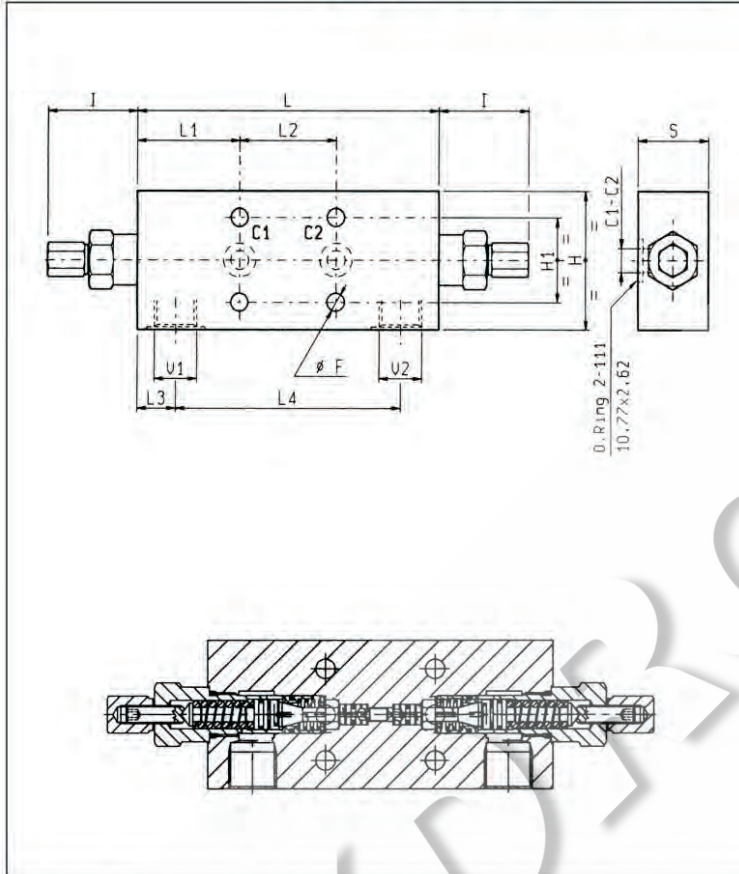
HYDROMA

ГИДРАВЛИЧЕСКИЕ СИСТЕМЫ

**BILANCIAMENTO, DOPPIO EFFETTO, SERIE "30", FLANGIABILI
DUAL PILOT ASSISTED, SERIES "30", FLANGEABLE
OVERCENTRE**

A-VBSO-DE-30-CSL-FCB

08.44.11 - X - Y - Z



DATI TECNICI / TECHNICAL DATA

Pressione max. 350 bar
Max. pressure

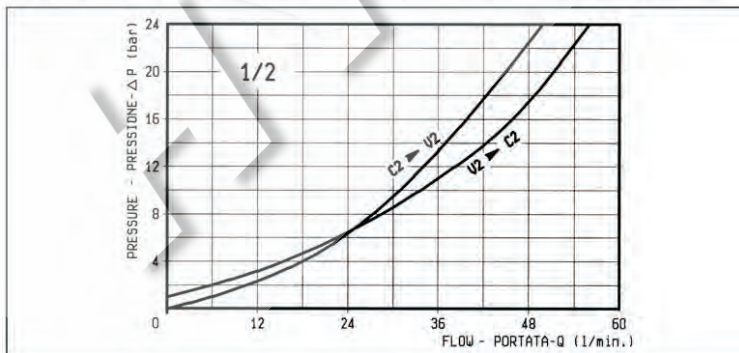
Portata max. vedi diagramma
Flow see performance graph

Taratura della valvola: almeno 1.3 volte superiore alla pressione indotta dal carico
Pressure setting: at least 1.3 times the load induced pressure

Cappellotto per piombatura Codice/Ordering code
Sealing Cap 03.05.01.003

Collettore in acciaio
Steel body

34.5	40	65	45	112	19.5	48	51.5	151	8.5										1/2	2.3
29.5	40	55	45	112	19.5	48	51.5	151	8.5										3/8	1.76
S	H1	H	I	L4	L3	L2	L1	L	F										Y	Pres. kg Weighting



X	RAPPORTO DI PILOTAGGIO PILOT RATIO
03	4.2 : 1
85	11 : 1

Z	MOLLE / SPRINGS				
	Campo taratura min - max bar Adj. press. range bar	Incremento press. bar / giro vite Press. increase bar / turn	Taratura standard bar (Q = 5 l/min) Std. setting bar (made at = 5 l/min)	Cod. ordinazione Ordering code	Colore Colour
20	X=03	60-210	56	200	03.51.01.106 verde green
	X=85	60-210	165	200	03.51.01.106 verde green
35	X=03	100-350	138	350	03.51.01.171 giallo yellow

Y	ATTACCHI / PORT SIZE	
	V1-V2	C1-C2
02	G 3/8	Ø 9
03	G 1/2	Ø 9