

Part number:

006-10299

**HYDROMA**

HYDRAULICKÉ SYSTÉMY

**HIDROMA**  
SYSTEMS

UKŁADY HYDRAULICZNE

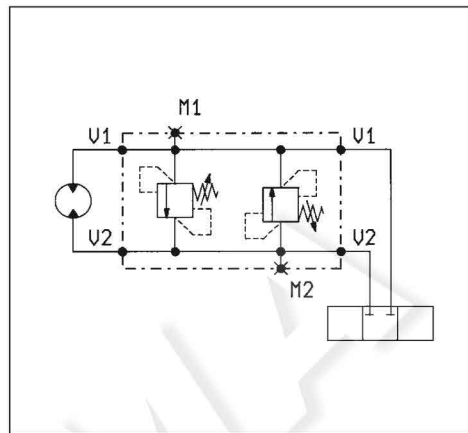
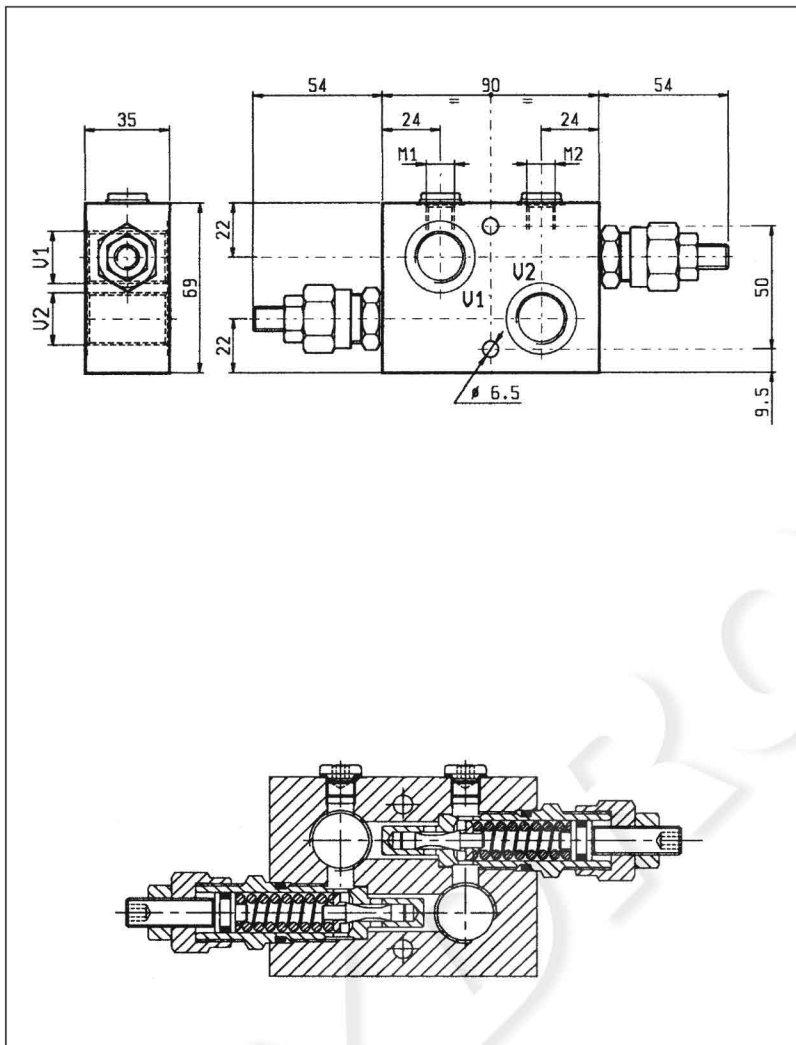
**HYDROMA**

ГИДРАВЛИЧЕСКИЕ СИСТЕМЫ

**MASSIMA PRESSIONE, DOPPIE INCROCIATE  
DUAL CROSS OVER RELIEF**

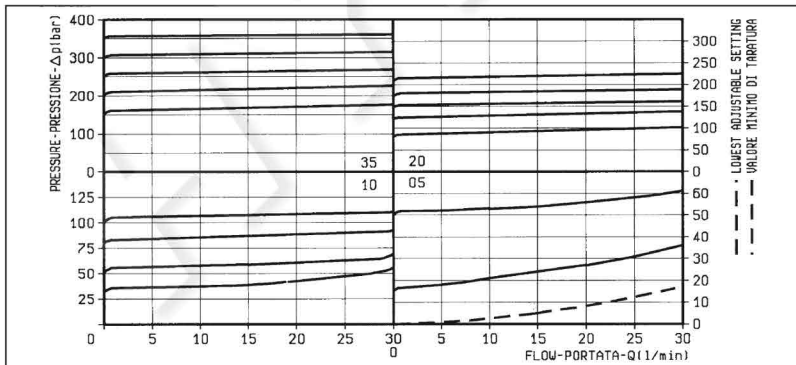
**VSDI-30**

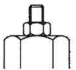

**05.16.03 - X - Y - Z**



**DATI TECNICI / TECHNICAL DATA**

Pressione di lavoro max. Max. working pressure	350 bar
Portata max. Flow max.	30 l/min
Peso Weight	0.79 kg



<b>X</b>	<b>REGOLAZIONI ADJUSTMENTS</b>
<b>03</b>	vite esterna esagono incassato leakproof hex. socket screw 
	cappello per piombatura sealing cap codice / ordering code 03.05.01.003 

Z	MOLLE / SPRINGS				
	Campo taratura min - max bar Adj. press. range bar	Incremento press. bar / giro vite Press. increase bar / turn	Taratura standard bar (Q = 5 l/min) Std. setting bar (made at 5 l/min)	Cod. ordinazione Ordering code	Colore Colour
<b>05</b>	5-50	12	50	03.51.01.077	nero black
<b>10</b>	30-100	24	100	03.51.01.076	blu blue
<b>20</b>	50-210	47	200	03.51.01.075	verde green
<b>35</b>	100-350	82	350	03.51.01.059	giallo yellow

Y	ATTACCHI / PORT SIZE	
	V1-V2	M1-M2
<b>02</b>	G 3/8	G 1/8
<b>03</b>	G 1/2	G 1/8