

Part number:

RE 18332-72/12.09

1/4

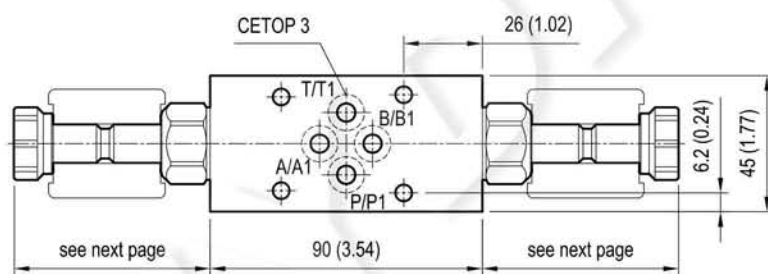
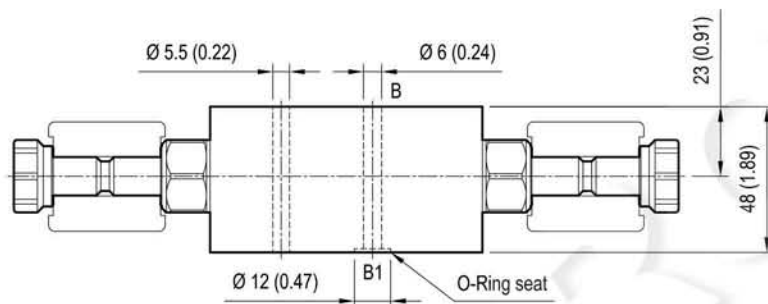
Replaces: RE 00199/11.07

Sandwich valves, module with solenoid valve

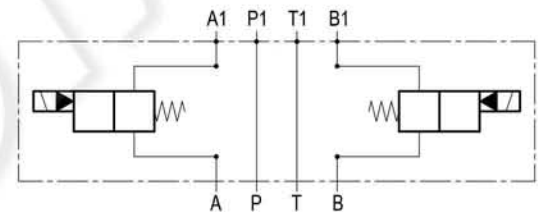
EM-VEI8A/8I-CETOP 3-A/B

OP . 15 - K - 18 - 29 - Y

Dimensions



[mm (inches)]



Cartridge schemes

| monodirectional type | bidirectional type |
|----------------------|--------------------|
| | |
| | |
| | |
| | |

Technical data

Max flow: up to 40 l/min (11 gpm)

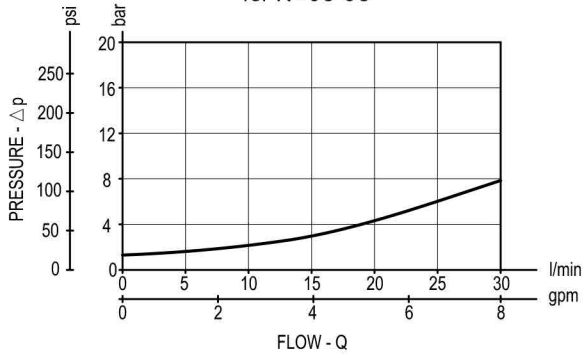
Max operating pressure: 210 bar (3000 psi)

Standard manifolds in high strength **aluminium**.

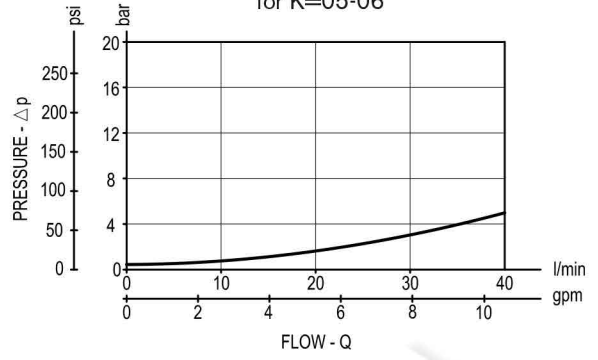
For working pressure up to 350 bar (5000 psi) and for fatigue applications with any working pressure, steel manifolds are available upon request.

Performance graphs

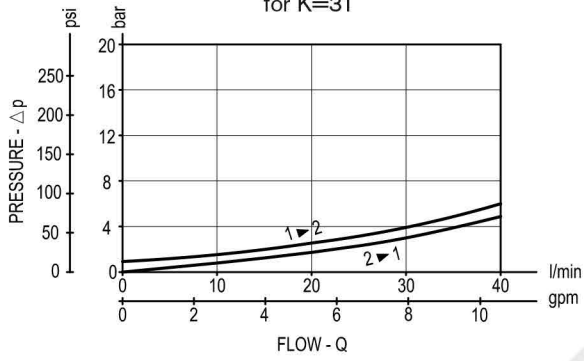
30 l/min (8 gpm)
for K=05-06



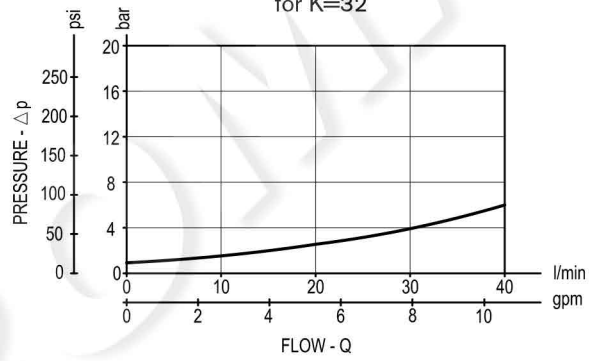
40 l/min (11 gpm)
for K=05-06



40 l/min (11 gpm)
for K=31



40 l/min (11 gpm)
for K=32



Ordering code

| | | | | |
|-------|---|----|----|---|
| OP:15 | K | 18 | 29 | Y |
|-------|---|----|----|---|

Sandwich valves
module with solenoid valve

Cartridge scheme (see page 1 and 2)

= 05

= 06

= 31

= 32

Bidirectional

Rated flow (see table on page 2)

Common cavity Size 08

Flange CETOP 3 (DOT3)

Preferred types (readily available)

| Type | Material number |
|----------------|-----------------|
| OP150518293A00 | R934002694 |
| OP150518293D00 | R934003310 |
| OP150618291A00 | R934002695 |
| OP153118293A00 | R934002696 |
| OP153118293D00 | R934003311 |
| OP153218291A00 | R934002697 |
| OP153218291B00 | R934002698 |
| | |
| | |
| | |
| | |
| | |
| | |
| | |
| | |
| | |
| | |
| | |
| | |

| Type | Material number |
|------|-----------------|
| | |
| | |
| | |
| | |
| | |
| | |
| | |
| | |
| | |
| | |
| | |
| | |
| | |
| | |
| | |
| | |
| | |
| | |
| | |
| | |