

Part number:

**006-10352**

**HYDROMA**

HYDRAULICKÉ SYSTÉMY

**HIDROMA  
SISTEMS**

UKŁADY HYDRAULICZNE

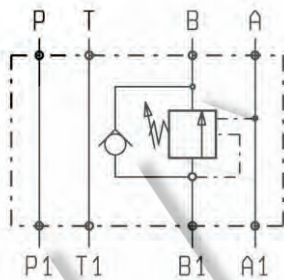
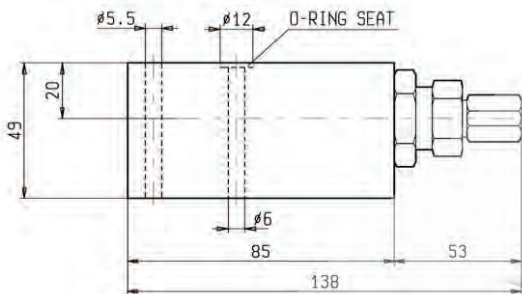
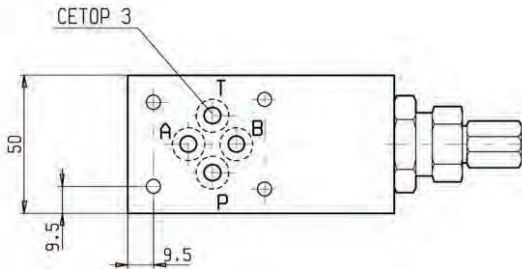
**HYDROMA**

ГИДРАВЛИЧЕСКИЕ СИСТЕМЫ

**SANDWICH VALVES  
SINGLE OVERCENTRE MODULES**

**EM-VBSOSEC30-CETOP 3**

**OP.20.01.03.29 - Z**



**DESCRIPTION - OPERATION**

These modules contain one single overcentre valve type VBSO-SEC-30 ( see Oil Control catalog ) and can be sandwich-mounted on CETOP 3 ( size 6 ) flanges.

**FEATURES - RATINGS**

**Maximum Operating Pressure** **250 bar**

**Rated Flow** **30 l/min**

- Weight : 0.710 Kg
- Fluids - Temperatures - Testing Conditions - Seals : see page 7.01.04
- Internal Leakage : see page 7.01.04
- Filtration : 25 µm nominal or better, see page 7.01.05
- Manifolds in high-strength aluminum for working pressures up to 250 bar.
- Special steel manifolds can be supplied upon request for working pressures up to 350 bar and for fatigue cycle applications with any working pressure.
- **IMPORTANT** : All products shown in this page are not available from stock and not included in our standard price list. Please contact our Sales Department for any information.

| Z         | SPRINGS                  |                              |                                 |               |        |
|-----------|--------------------------|------------------------------|---------------------------------|---------------|--------|
|           | Adj. press.<br>Range bar | Press.Increase<br>bar / turn | Std. Setting<br>bar (Q=5 l/min) | Ordering code | Colour |
| <b>20</b> | 60-210                   | 56                           | 200                             | 03.51.01.106  | green  |
| <b>35</b> | 100-350                  | 100                          | 350                             | 03.51.01.114  | yellow |

**PRESSURE DROP**

