

Part number:

006-10359

HYDROMA

HYDRAULICKÉ SYSTÉMY

**HIDROMA
SYSTEMS**

UKŁADY HYDRAULICZNE

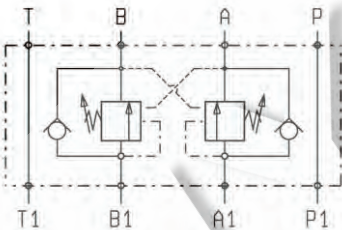
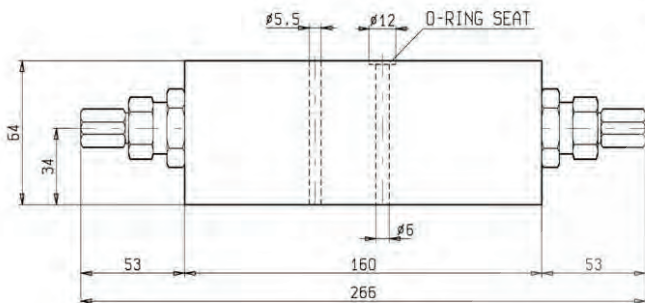
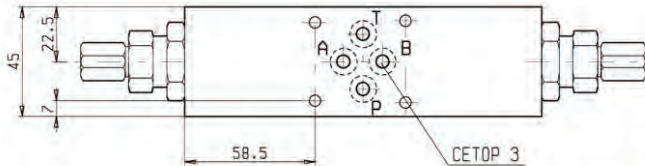
HYDROMA

ГИДРАВЛИЧЕСКИЕ СИСТЕМЫ

**SANDWICH VALVES
DUAL OVERCENTRE MODULES**

EM-VBSODE-CETOP 3

OP.22.01.03.29 - Z



DESCRIPTION - OPERATION

These modules contain two single overcentre valve type VBSO-SEC-30 (see Oil Control catalog) and can be sandwich-mounted on CETOP 3 (size 6) flanges.

FEATURES - RATINGS

Maximum Operating Pressure 250 bar
Rated Flow 30 l/min

- Weight : 1.560 Kg
- Fluids - Temperatures - Testing Conditions - Seals : see page 7.01.04
- Internal Leakage : see page 7.01.04
- Filtration : 25 µm nominal or better, see page 7.01.05
- Manifolds in high-strength aluminum for working pressures up to 250 bar.
- Special steel manifolds can be supplied upon request for working pressures up to 350 bar and for fatigue cycle applications with any working pressure.
- **IMPORTANT** : All products shown in this page are not available from stock and not included in our standard price list. Please contact our Sales Department for any information.

SPRINGS

Z	Adj. press.	Press.Increase	Std. Setting	Ordering code	Colour
	Range bar	bar / turn	bar (Q=5 l/min)		
20	60-210	56	200	03.51.01.106	green
35	100-350	100	350	03.51.01.114	yellow

PRESSURE DROP

