

Part number:

006-11431

HYDROMA
HYDRAULICKÉ SYSTÉMY

HIDROMA
SISTEMS
UKŁADY HYDRAULICZNE

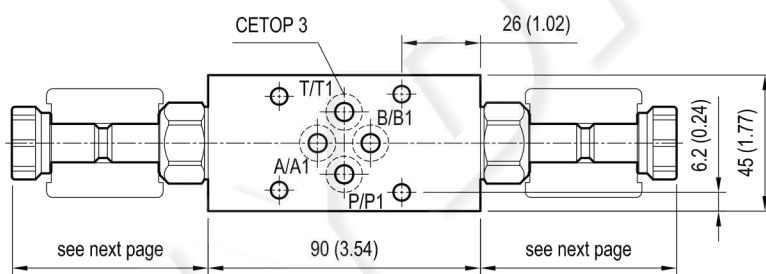
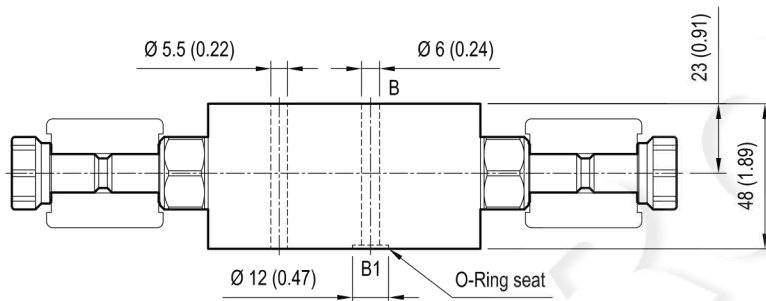
HYDROMA
ГИДРАВЛИЧЕСКИЕ СИСТЕМЫ

Sandwich valves, module with solenoid valve

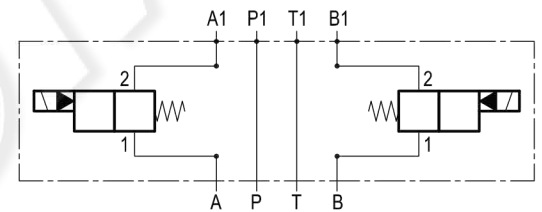
EM-VEI8A/8I-CETOP 3-A/B

OP . 15 - K - 18 - 29 - Y

Dimensions



[mm (inches)]



Cartridge schemes

monodirectional type	bidirectional type

Technical data

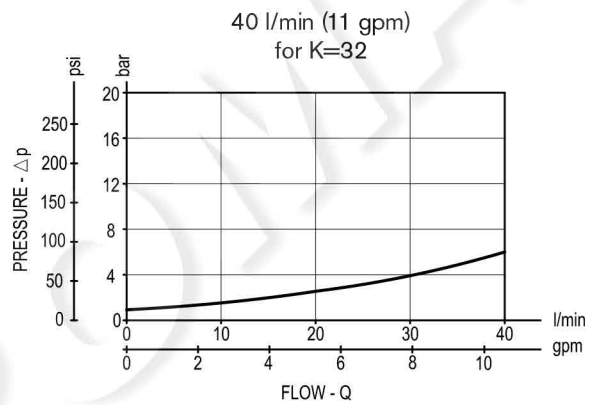
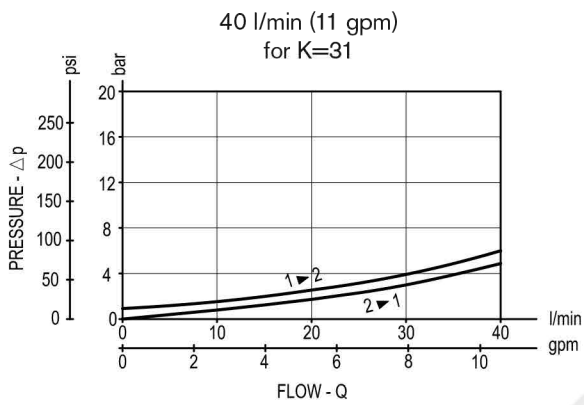
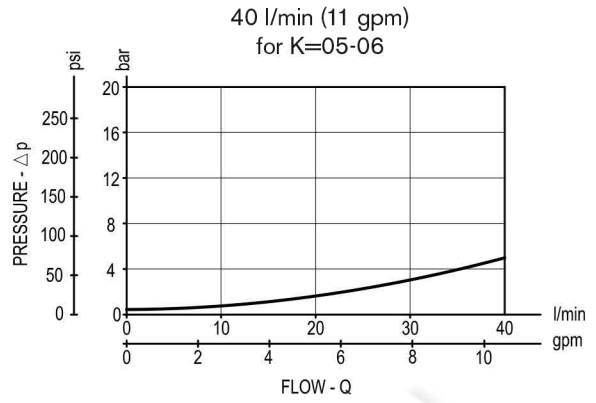
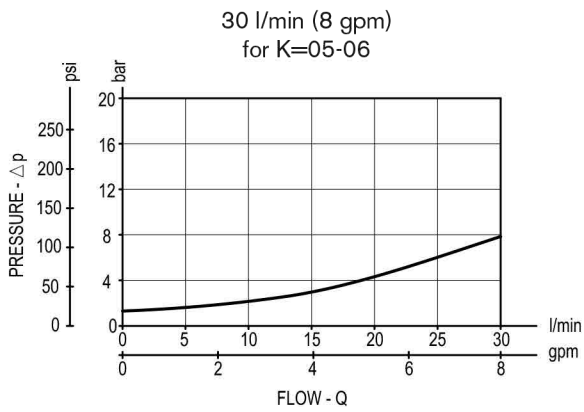
Max flow: up to 40 l/min (11 gpm)

Max operating pressure: 210 bar (3000 psi)

Standard manifolds in high strength **aluminium**.

For working pressure up to 350 bar (5000 psi) and for fatigue applications with any working pressure, steel manifolds are available upon request.

Performance graphs



Ordering code

OP.15	K	18	29	Y
-------	---	----	----	---

Sandwich valves
module with solenoid valve

Cartridge scheme (see page 1 and 2)

= 05

= 06

= 31

= 32

Bidirectional

Rated flow (see table on page 2)

Common cavity Size 08

Flange CETOP 3 (DOT3)

Preferred types (readily available)

Type	Material number
OP150518293A00	R934002694
OP150518293D00	R934003310
OP150618291A00	R934002695
OP153118293A00	R934002696
OP153118293D00	R934003311
OP153218291A00	R934002697
OP153218291B00	R934002698

Type	Material number