

Part number:

**HYDROMA**

HYDRAULICKÉ SYSTÉMY

**HIDROMA  
SYSTEMS**

UKŁADY HYDRAULICZNE

**HYDROMA**

ГИДРАВЛИЧЕСКИЕ СИСТЕМЫ

Tipo / Type

**FPT.\***

Sez / Section

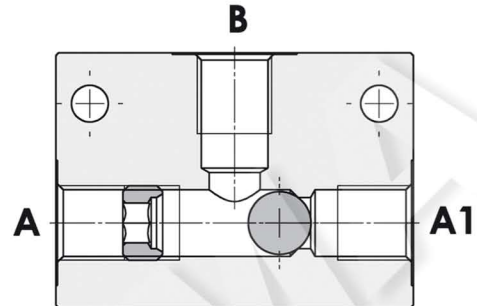
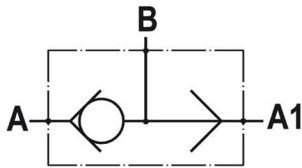
**G**

Pag. / Page

**050/1**

**Valvola di commutazione, montaggio in linea**  
**Shuttle valve, line mounted**

Rev.02-2010/08



#### SPECIFICHE TECNICHE

**Materiali:** corpo in acciaio. La sfera è in acciaio trattato termicamente. La superficie esterna è protetta mediante zincatura.

**Portata max.:** fino a 110 l/min

**Pressione max.:** 350 bar

#### TECHNICAL SPECIFICATIONS

**Materials:** body is steel made. Ball is in hardened steel. External surface is zinc plated.

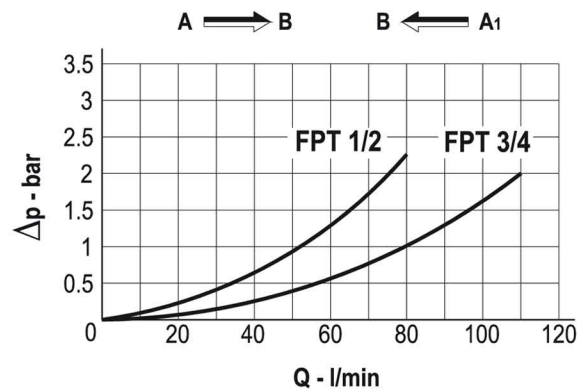
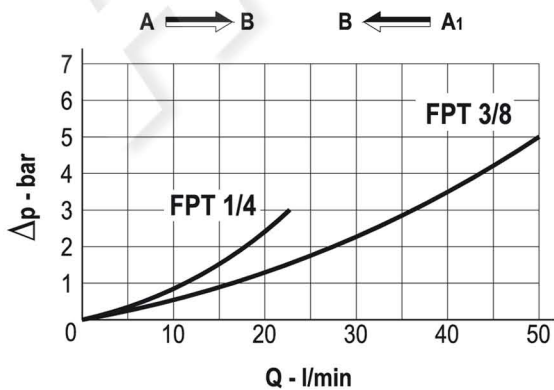
**Rated flow:** up to 110 l/min

**Max. pressure:** 350 bar

#### DIAGRAMMA PERDITE DI CARICO - PRESSURE DROP CURVES

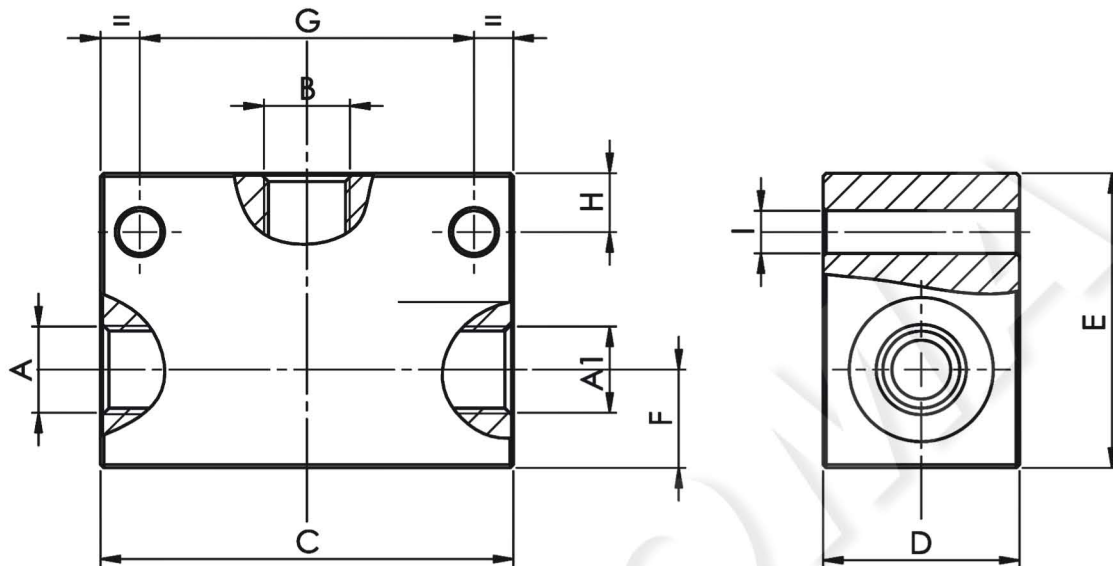
Viscosità olio 24 mm<sup>2</sup>/sec. (3,5 °E)  
Temperatura 50 °C

Oil viscosity 24 mm<sup>2</sup>/sec. (3,5 °E)  
Temperature 50 °C



**Valvola di commutazione, montaggio in linea**  
**Shuttle valve, line mounted**

Rev.02-2010/08



TIPO TYPE	PORTATA MAX. MAX FLOW	A-A1 B	C	D	E	F	G	H	I	PESO WEIGHT
	L/MIN	BSPP	mm	mm	mm	mm	mm	mm	mm	Kg
FPT 1/4	25	1/4"	63	30	45	15	51	9	6.5	0.570
FPT 3/8	50	3/8"	63	30	45	15	51	9	6.5	0.530
FPT 1/2	80	1/2"	90	40	60	20	75	7.5	8.5	1.450
FPT 3/4	110	3/4"	90	40	60	20	75	7.5	8.5	1.350

**ESEMPIO DI ORDINAZIONE - ORDERING CODE EXAMPLE**

**F P T**    **3 / 8**

- 1/4 - 1/4" BSPP  
 3/8 - 3/8" BSPP  
 \* 1/2 - 1/2" BSPP  
 3/4 - 3/4" BSPP

Connessioni - Port sizes