

Part number:

HYDROMA

HYDRAULICKÉ SYSTÉMY

**HIDROMA
SYSTEMS**

UKŁADY HYDRAULICZNE

HYDROMA

ГИДРАВЛИЧЕСКИЕ СИСТЕМЫ

Tipo/Type

FPMU-*.*.*

Sez./Section

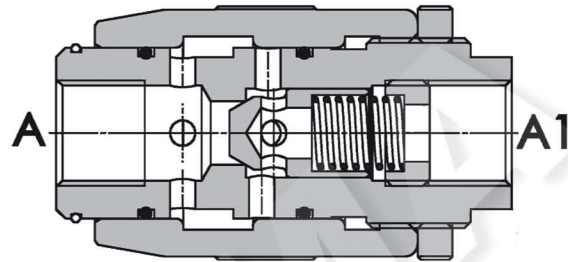
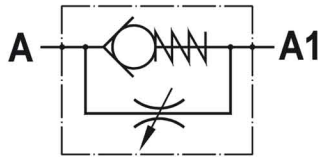
I

Pag./Page

070/1

Valvola regolatrice di flusso unidirezionale, tipo a manicotto
Restrictor valve, barrel type

Rev.01-2010/02



SPECIFICHE TECNICHE

Materiali: corpo e parti interne in acciaio. La superficie esterna è protetta mediante zincatura.

Portata max.: 150 l/min

Pressione max.: 350 bar, vedasi tabella a parte

Pressione di apertura: standard 0,5 bar, a richiesta 2.5-5-10 bar

TECHNICAL SPECIFICATIONS

Materials: body and internal parts are steel made. External surface zinc plated.

Rated flow: 150 l/min

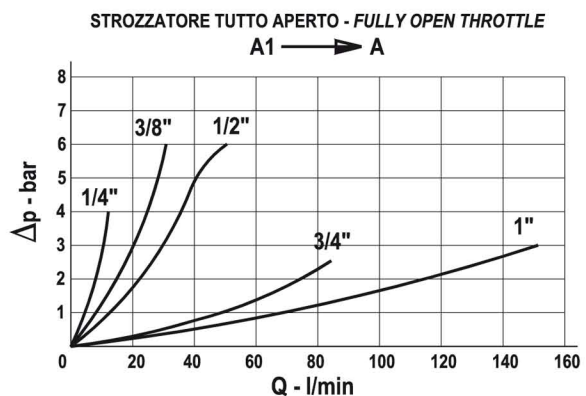
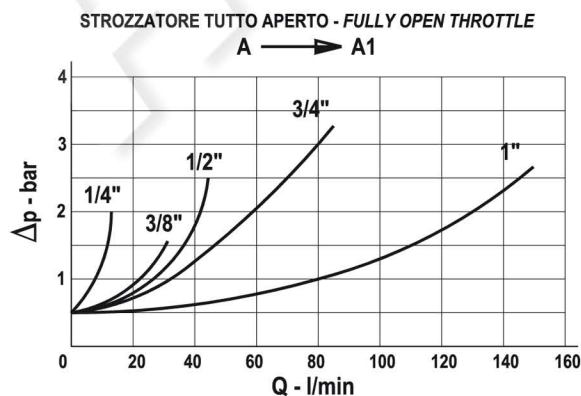
Max. pressure: 350 bar, see data sheet

Cracking pressure: 0.5 bar standard, 2.5-5-10 bar on request

DIAGRAMMA PERDITE DI CARICO - PRESSURE DROP CURVES

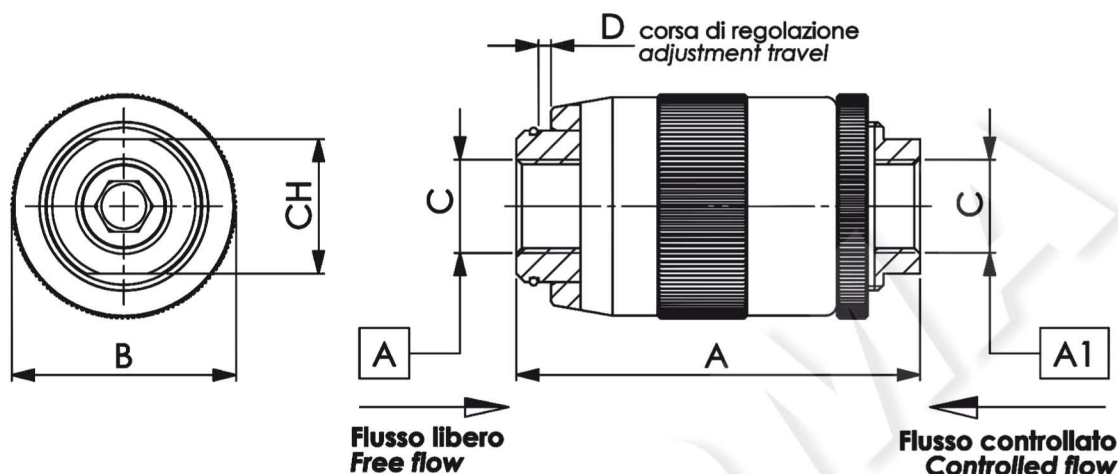
Viscosità olio 24 mm²/sec. (3,5 °E)
Temperatura 50 °C

Oil viscosity 24 mm²/sec. (3,5 °E)
Temperature 50 °C



Valvola regolatrice di flusso unidirezionale, tipo a manicotto
Restrictor valve, barrel type

Rev.01-2010/02



TIPO TYPE	PORTATA MAX. MAX FLOW	PRESSIONE MAX. MAX PRESSURE	A	B	C	D	CH	PESO WEIGHT
	L/MIN	BAR	mm	mm	BSPP	mm	mm	Kg
FPMU 1/4	12	350	62	34	1/4"	4.5	19	0.275
FPMU 3/8	30	350	72	40	3/8"	5.5	24	0.430
FPMU 1/2	45	310	80	46	1/2"	7	30	0.630
FPMU 3/4	85	280	100	54	3/4"	10	36	1.050
FPMU 1	150	250	125	65	1"	12	41	1.960

ESEMPIO DI ORDINAZIONE - ORDERING CODE EXAMPLE

F P M U **1 / 2** **2 , 5** *****

1/4 – 1/4" BSPP
 3/8 – 3/8" BSPP
 * 1/2 – 1/2" BSPP
 3/4 – 3/4" BSPP
 Connessioni - Port sizes

0.5 bar (std) – 2.5 bar – 5 bar – 10 bar
 * Pressione apertura ritegno, omettere se std
 Cracking pressure, omit if std

Guarnizioni – Seals:
 V=Viton *
 Omettere se BUNA-N – Omit if BUNA-N