

Part number:

HYDROMA

HYDRAULICKÉ SYSTÉMY

HIDROMA
SYSTEMS

UKŁADY HYDRAULICZNE

HYDROMA

ГИДРАВЛИЧЕСКИЕ СИСТЕМЫ

Tipo / Type

FPR-*.*

Sez./Section

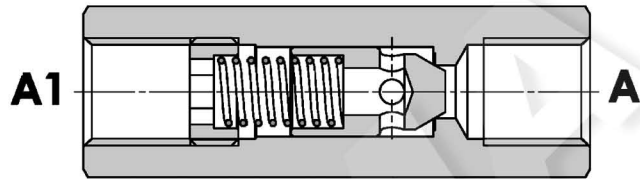
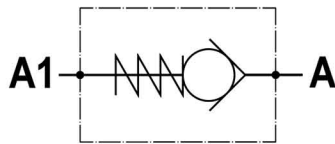
D

Pag./Page

025/1

Valvola di ritegno unidirezionale
Check valve

Rev.03-2022/06



SPECIFICHE TECNICHE

Materiali: corpo in acciaio. L'otturatore conico guidato è in acciaio trattato termicamente. La superficie esterna è protetta mediante zincatura.

Portata: fino a 310 l/min

Pressione max.: 350 bar, vedasi tabella a parte

Pressione di apertura: standard 0,5 bar, a richiesta 2.5-5-10 bar

TECHNICAL SPECIFICATIONS

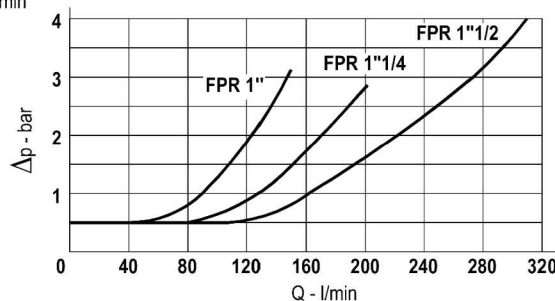
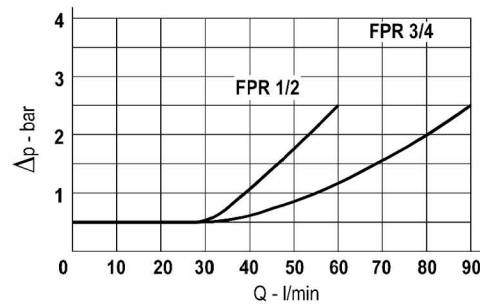
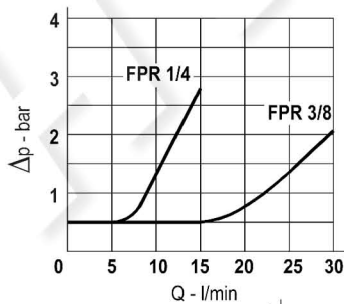
Materials: body is steel made. Guided poppet is in hardened steel. External surface is zinc plated.

Rated flow: up to 310 l/min

Max. pressure: 350 bar, see data sheet

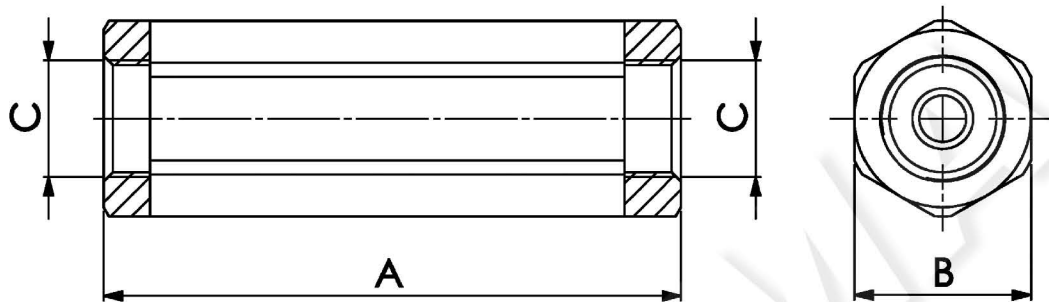
Cracking pressure: 0,5 bar standard, on request: 2.5-5-10 bar

DIAGRAMMA PERDITE DI CARICO PRESSURE DROP CURVES



Valvola di ritegno unidirezionale
Check valve

Rev.03-2022/06



TIPO TYPE	PORTATA MAX. MAX FLOW	PRESSIONE MAX. MAX PRESSURE	A	B	C	PESO WEIGHT
	L/MIN	BAR	mm	mm	BSPP	Kg
FPR 1/4"	15	350	62	19	1/4"	0,10
FPR 3/8"	30	350	68	24	3/8"	0,17
FPR 1/2"	60	320	78	27	1/2"	0,22
FPR 3/4"	90	300	88	36	3/4"	0,45
FPR 1"	150	250	112	46	1"	0,97
FPR 1 1/4"	200	250	142	55	1 1/4"	1,68
FPR 1 1/2"	310	210	155	60	1 1/2"	2,10

ESEMPIO DI ORDINAZIONE - ORDERING CODE EXAMPLE

F P R **1 / 4** **2 , 5**

- 1/4 - 1/4" BSPP
 - 3/8 - 3/8" BSPP
 - 1/2 - 1/2" BSPP
 - * 3/4 - 3/4" BSPP
 - 1 - 1" BSPP
 - 1 1/4 - 1 1/4" BSPP
 - 1 1/2 - 1 1/2" BSPP
- Connessioni - Port sizes

- 0.5 bar (std)
- 2.5 bar
- 5 bar *
- 10 bar

Pressione apertura ritegno, omettere se std
Cracking pressure, omit if standard