

Part number:

009-10046a

**HYDROMA**

HYDRAULICKÉ SYSTÉMY

**HIDROMA  
SYSTEMS**

UKŁADY HYDRAULICZNE

**HYDROMA**

ГИДРАВЛИЧЕСКИЕ СИСТЕМЫ

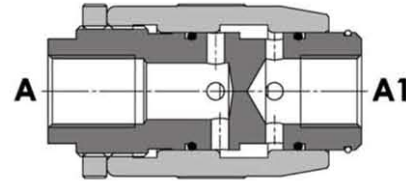
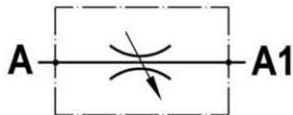
Tipo / Type

**FPMB- \*- \***

Sez / Section

**L**

Valvola regolatrice di flusso bidirezionale, tipo a manicotto  
Needle valve, barrel type



**SPECIFICHE TECNICHE**

**Materiali:** corpo e parti interne in acciaio. La superficie esterna è protetta mediante zincatura.

**Portata max.:** 150 l/min

**Pressione max.:** 350 bar, vedasi tabella a parte

**TECHNICAL SPECIFICATIONS**

**Materials:** body and internal parts are steel made. External surface zinc plated.

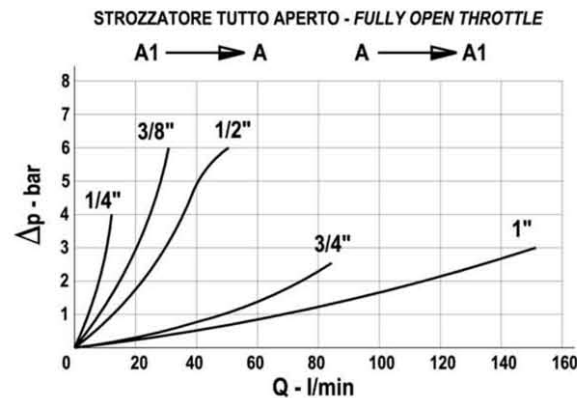
**Rated flow:** 150 l/min

**Max. pressure:** 350 bar, see data sheet

**DIAGRAMMA PERDITE DI CARICO - PRESSURE DROP CURVES**

Viscosità olio 24 mm<sup>2</sup>/sec. (3,5 °E)  
Temperatura 50 °C

Oil viscosity 24 mm<sup>2</sup>/sec. (3,5 °E)  
Temperature 50 °C



Part number:

**009-10046b**

**HYDROMA**

HYDRAULICKÉ SYSTÉMY

**HIDROMA  
SISTEMS**

UKŁADY HYDRAULICZNE

**HYDROMA**

ГИДРАВЛИЧЕСКИЕ СИСТЕМЫ

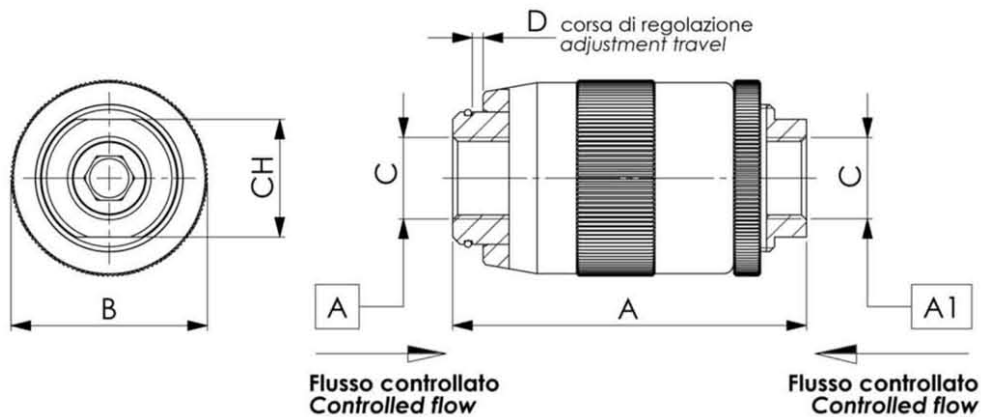
Tipo / Type

**FPMB-\*.\***

Sez / Section

**L**

Valvola regolatrice di flusso bidirezionale, tipo a manicotto  
Needle valve, barrel type



| TIPO<br>TYPE | PORTATA MAX.<br>MAX. FLOW | PRESSIONE MAX.<br>MAX. PRESSURE | A   | B  | C    | D   | CH | PESO<br>WEIGHT |
|--------------|---------------------------|---------------------------------|-----|----|------|-----|----|----------------|
|              | l/min                     | bar                             | mm  | mm | BSPP | mm  | mm | Kg             |
| FPMU 1/4     | 12                        | 350                             | 62  | 34 | 1/4" | 4.5 | 19 | 0.275          |
| FPMU 3/8     | 30                        | 350                             | 72  | 40 | 3/8" | 5.5 | 24 | 0.430          |
| FPMU 1/2     | 45                        | 310                             | 80  | 46 | 1/2" | 7   | 30 | 0.630          |
| FPMU 3/4     | 85                        | 280                             | 100 | 54 | 3/4" | 10  | 36 | 1.050          |
| FPMU 1       | 150                       | 250                             | 125 | 65 | 1"   | 12  | 41 | 1.960          |

**ESEMPIO DI ORDINAZIONE – ORDERING CODE EXAMPLE**

