

Part number:

HYDROMA

HYDRAULICKÉ SYSTÉMY

HIDROMA
SYSTEMS

UKŁADY HYDRAULICZNE

HYDROMA

ГИДРАВЛИЧЕСКИЕ СИСТЕМЫ

Tipo / Type

FPR-*.*

Sez./Section

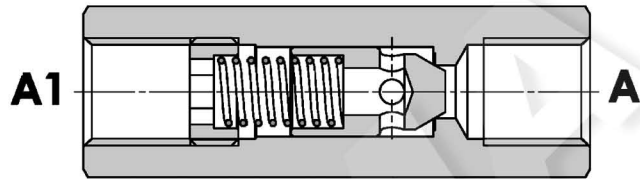
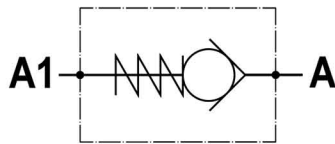
D

Pag./Page

025/1

Valvola di ritegno unidirezionale
Check valve

Rev.03-2022/06



SPECIFICHE TECNICHE

Materiali: corpo in acciaio. L'otturatore conico guidato è in acciaio trattato termicamente. La superficie esterna è protetta mediante zincatura.

Portata: fino a 310 l/min

Pressione max.: 350 bar, vedasi tabella a parte

Pressione di apertura: standard 0,5 bar, a richiesta 2.5-5-10 bar

TECHNICAL SPECIFICATIONS

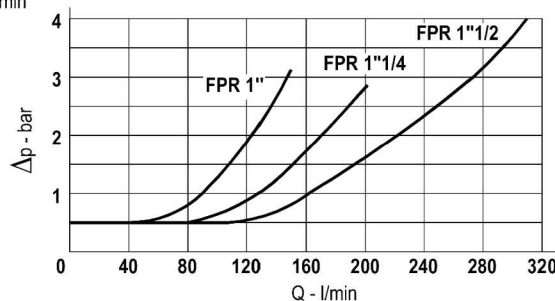
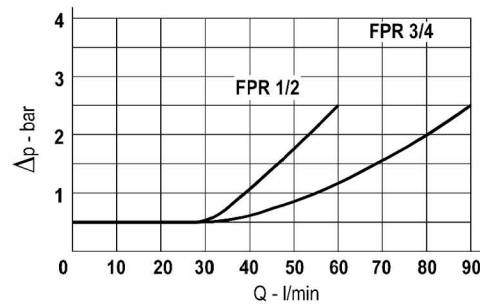
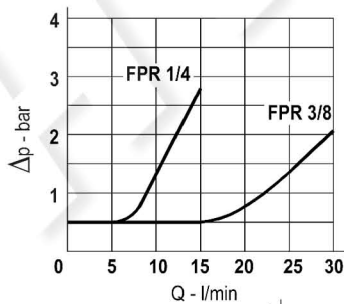
Materials: body is steel made. Guided poppet is in hardened steel. External surface is zinc plated.

Rated flow: up to 310 l/min

Max. pressure: 350 bar, see data sheet

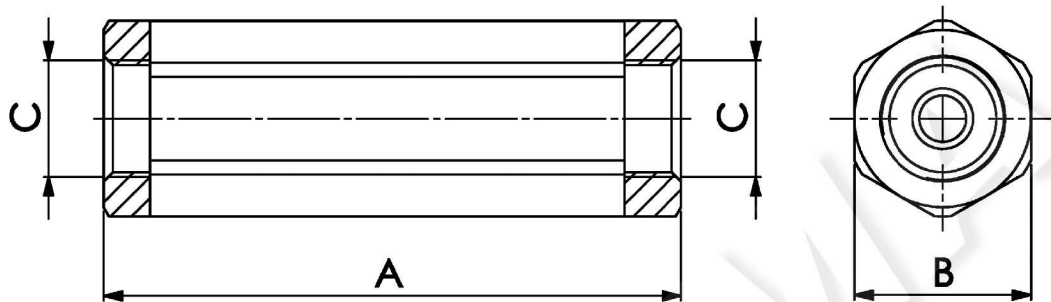
Cracking pressure: 0,5 bar standard, on request: 2.5-5-10 bar

DIAGRAMMA PERDITE DI CARICO PRESSURE DROP CURVES



Valvola di ritegno unidirezionale
Check valve

Rev.03-2022/06



| TIPO TYPE | PORTATA MAX. MAX FLOW | PRESSIONE MAX. MAX PRESSURE | A | B | C | PESO WEIGHT |
|--------------|--------------------------|--------------------------------|-----|----|--------|----------------|
| | L/MIN | BAR | mm | mm | BSPP | Kg |
| FPR 1/4" | 15 | 350 | 62 | 19 | 1/4" | 0,10 |
| FPR 3/8" | 30 | 350 | 68 | 24 | 3/8" | 0,17 |
| FPR 1/2" | 60 | 320 | 78 | 27 | 1/2" | 0,22 |
| FPR 3/4" | 90 | 300 | 88 | 36 | 3/4" | 0,45 |
| FPR 1" | 150 | 250 | 112 | 46 | 1" | 0,97 |
| FPR 1 1/4" | 200 | 250 | 142 | 55 | 1 1/4" | 1,68 |
| FPR 1 1/2" | 310 | 210 | 155 | 60 | 1 1/2" | 2,10 |

ESEMPIO DI ORDINAZIONE - ORDERING CODE EXAMPLE

F P R 1 / 4 2 , 5

- 1/4 - 1/4" BSPP
 - 3/8 - 3/8" BSPP
 - 1/2 - 1/2" BSPP
 - * 3/4 - 3/4" BSPP
 - 1 - 1" BSPP
 - 1 1/4 - 1 1/4" BSPP
 - 1 1/2 - 1 1/2" BSPP
- Connessioni - Port sizes

- 0.5 bar (std)
- 2.5 bar
- 5 bar *
- 10 bar

Pressione apertura ritegno, omettere se std
Cracking pressure, omit if standard