

Part number:

**HYDROMA**

HYDRAULICKÉ SYSTÉMY

**HIDROMA  
SYSTEMS**

UKŁADY HYDRAULICZNE

**HYDROMA**

ГИДРАВЛИЧЕСКИЕ СИСТЕМЫ

Tipo/Type

**FPMU-\*.\*.\***

Sez./Section

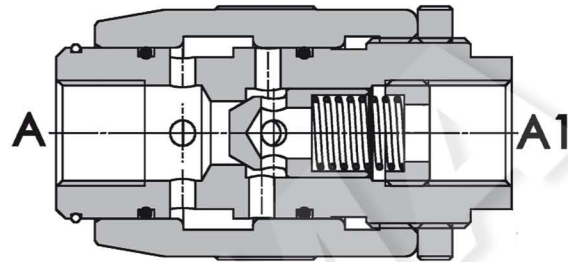
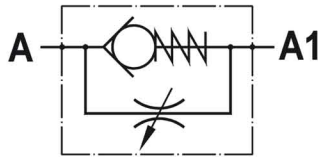
**I**

Pag./Page

**070/1**

**Valvola regolatrice di flusso unidirezionale, tipo a manicotto**  
**Restrictor valve, barrel type**

Rev.01-2010/02



#### SPECIFICHE TECNICHE

**Materiali:** corpo e parti interne in acciaio. La superficie esterna è protetta mediante zincatura.

**Portata max.:** 150 l/min

**Pressione max.:** 350 bar, vedasi tabella a parte

**Pressione di apertura:** standard 0,5 bar, a richiesta 2.5-5-10 bar

#### TECHNICAL SPECIFICATIONS

**Materials:** body and internal parts are steel made. External surface zinc plated.

**Rated flow:** 150 l/min

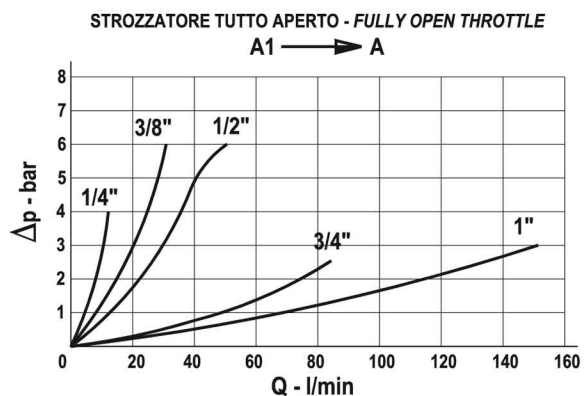
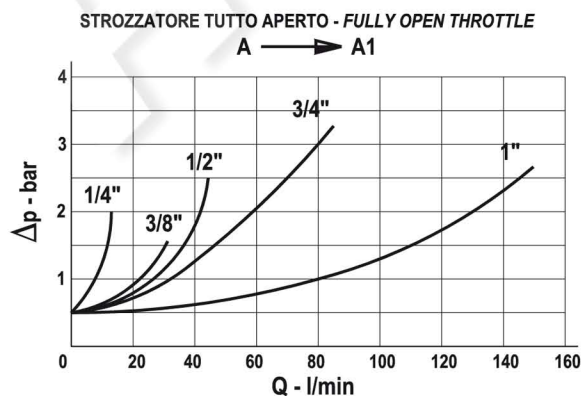
**Max. pressure:** 350 bar, see data sheet

**Cracking pressure:** 0.5 bar standard, 2.5-5-10 bar on request

#### DIAGRAMMA PERDITE DI CARICO - PRESSURE DROP CURVES

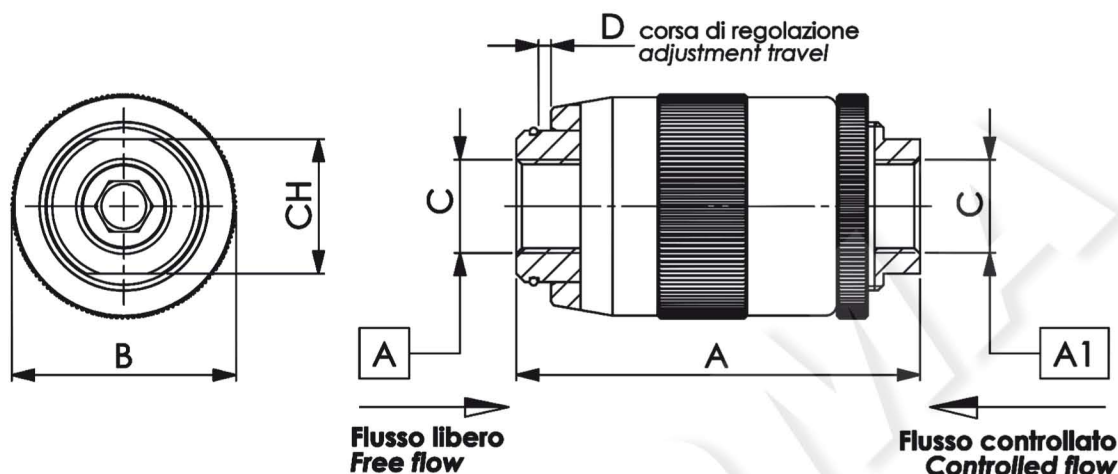
Viscosità olio 24 mm<sup>2</sup>/sec. (3,5 °E)  
Temperatura 50 °C

Oil viscosity 24 mm<sup>2</sup>/sec. (3,5 °E)  
Temperature 50 °C



**Valvola regolatrice di flusso unidirezionale, tipo a manicotto**  
**Restrictor valve, barrel type**

Rev.01-2010/02



TIPO TYPE	PORTATA MAX. MAX FLOW	PRESSIONE MAX. MAX PRESSURE	A	B	C	D	CH	PESO WEIGHT
	L/MIN	BAR	mm	mm	BSPP	mm	mm	Kg
FPMU 1/4	12	350	62	34	1/4"	4.5	19	0.275
FPMU 3/8	30	350	72	40	3/8"	5.5	24	0.430
FPMU 1/2	45	310	80	46	1/2"	7	30	0.630
FPMU 3/4	85	280	100	54	3/4"	10	36	1.050
FPMU 1	150	250	125	65	1"	12	41	1.960

**ESEMPIO DI ORDINAZIONE - ORDERING CODE EXAMPLE**

**F P M U**    1 / 2    2 , 5    \*

1/4 – 1/4" BSPP  
 3/8 – 3/8" BSPP  
 \* 1/2 – 1/2" BSPP  
 3/4 – 3/4" BSPP  
 Connessioni - Port sizes

0.5 bar (std) – 2.5 bar – 5 bar – 10 bar  
 \* Pressione apertura ritegno, omettere se std  
 Cracking pressure, omit if std

Guarnizioni – Seals:  
 V=Viton \*  
 Omettere se BUNA-N – Omit if BUNA-N